



System Factbook



2019-2020

Arkansas State University System 2019-2020 Factbook

Any questions concerning
material contained herein
should be directed to:

Office of Strategic Research
Arkansas State University System
501 Woodlane Street, Suite 600
Little Rock, Arkansas 72201

Telephone: (501) 660-1015
E-mail: eatchison@asusystem.edu



Table of Contents

Foreword	4
Quick Reference (Arkansas State University System)	5
ABOUT THE SYSTEM.....	6
Arkansas State University System	7
Arkansas State University	8
Arkansas State University-Beebe.....	9
Arkansas State University-Mountain Home.....	10
Arkansas State University-Newport.....	11
Arkansas State University Mid-South.....	12
Arkansas State University Three Rivers.....	13
ASU System Organizational Structure	14
Institutional Classifications (SREB & Carnegie Foundation)	15
ACADEMIC PROGRAMS	16
By Level and Distance Education Offerings	17
Academic Program Inventory	18
DEGREES & CERTIFICATES AWARDED.....	24
Degrees & Certificates Awarded Summary	25
ENROLLMENT.....	26
System Academic Year Enrollment Summary	27
System Fall Enrollment Summary	28
A-State Total.....	29
A-State (Excludes Campus Querétaro).....	30
Arkansas State University Campus Querétaro	31
ASU-Beebe	32
ASU-Mountain Home	33
ASU-Newport	34
ASU Mid-South	35
ASU Three Rivers	36
Geographic Origin of Total Enrollment By Arkansas County	37
Geographic Origin of Total Enrollment By State	39
First-Time in College Students	41
First-Time Transfer Students	42

ACADEMIC PROGRESS.....	43
Retention Rates.....	44
Graduation Rates	45
TUITION & REQUIRED FEES.....	46
Student Costs - Tuition & Required Fees	47
STUDENT FINANCIAL AID.....	48
System Student Financial Aid Summary (Undergraduates).....	49
EMPLOYEES.....	50
System Employee Summary (Full-Time).....	51
System Employee Summary (Part-Time).....	52

Foreword



Welcome to the **2019-2020 Arkansas State University System Factbook!** The ASU System Factbook is a publication produced by the Office of Strategic Research that outlines enrollment, faculty and staff data, and other comprehensive information for the Arkansas State University System campuses. The ASU System Factbook is produced annually and is intended to provide answers to questions that are frequently asked by the administration, faculty, staff, students, alumni and other university constituents.

The definitions and guidelines used to compile this information are provided by the Integrated Postsecondary Education Data System (IPEDS) and the Arkansas Division of Higher Education (ADHE). It is important to note that where possible data reported by the Office of Strategic Research matches information reported to federal, state and regional agencies. However, due to differences in reporting guidelines, definitions, and the timing of when the information was prepared, not all of the information contained herein is aligned.

In order to make information more readily available to all constituents, the ASU System Factbook is available in PDF format on the Strategic Research web page. You can reach our web page through the Arkansas State University System web site, or you can go to our site directly at

<http://www.asusystem.edu/offices/research>

A comprehensive document of this magnitude requires the assistance of a number of people on the various ASU System campuses. Many thanks to all who helped make the **2019-2020 Arkansas State University System Factbook** a successful reality. Should you have any questions, comments or corrections regarding this document, please contact the Office of Strategic Research.

Quick Reference - Arkansas State University System



Student Enrollment: 23,261

Fall 2019

Arkansas State University System

Enrollment	23,261
Full-Time-Equivalent* (FTE) (67.0%)	15,608

Undergraduate (includes high school)

A-State (68.1%)	9,463
Beebe	3,317
Mountain Home	1,325
Newport	2,247
Mid-South	1,330
Three Rivers	1,151

Graduate

A-State (31.9%)	4,428
-----------------	-------

Male (38.9%)

A-State (38.3%)	5,316
Beebe (39.9%)	1,322
Mountain Home (39.1%)	518
Newport (37.9%)	842
Mid-South (38.8%)	516
Three Rivers (45.2%)	520

Female (61.1%)

A-State (61.7%)	8,575
Beebe (60.1%)	1,995
Mountain Home (60.9%)	807
Newport (62.1%)	1,405
Mid-South (61.2%)	814
Three Rivers (54.8%)	631

Ethnic Minorities (23.0%, excludes Unknown & International)

A-State (21.0%)	2,648
Beebe (16.4%)	531
Mountain Home (11.8%)	157
Newport (23.2%)	474
Mid-South (65.9%)	868
Three Rivers (27.5%)	315

Age

	Under 25	25 & Older	
A-State	8,697	5,194	(37.4%)
Beebe	2,592	725	(21.9%)
Mountain Home	861	464	(35.0%)
Newport	1,616	631	(28.1%)
Mid-South	1,037	293	(22.0%)
Three Rivers	822	329	(28.6%)

Enrollment from Arkansas (79.3%)

A-State (67.7%)	9,408
Beebe (98.5%)	3,268
Mountain Home (95.1%)	1,260
Newport (96.0%)	2,154
Mid-South (91.7%)	1,219
Three Rivers (98.9%)	1,138

Enrollment from Out-of-State (15.7%)

A-State (24.3%)	3,381
Beebe (1.0%)	34
Mountain Home (4.9%)	65
Newport (3.0%)	65
Mid-South (7.8%)	104
Three Rivers (0.2%)	2

Enrollment from Foreign Countries (5.0%)

A-State (7.9%)	1,102
Beebe (0.5%)	15
Mountain Home (0.0%)	0
Newport (1.2%)	28
Mid-South (0.5%)	7
Three Rivers (1.0%)	11

Academic Awards & Degrees: 9,413

Fiscal Year 2018-2019

Certificate (includes Cert. of Proficiency & Technical Cert.) 3,010

A-State	9
Beebe	853
Mountain Home	336
Newport	844
Mid-South	439
Three Rivers	529

Associate 1,973

A-State	540
Beebe	769
Mountain Home	185
Newport	237
Mid-South	128
Three Rivers	114

Bachelor's

A-State	1,820
---------	-------

Graduate

A-State (includes Graduate Certificates)	2,610
--	-------

Annual Tuition & Required Fees

Fall 2019

Based on 12 hours for undergraduate students and 9 hours for graduate students.

Undergraduate Resident

A-State	\$7,130
Beebe	2,856
Mountain Home	2,924
Newport	2,994
Mid-South	3,274
Three Rivers	3,256

Undergraduate Nonresident

A-State	\$12,698
Beebe	4,584
Mountain Home	4,532
Newport	4,458
Mid-South	4,234
Three Rivers	5,680

Graduate

Resident: A-State	\$6,422
Nonresident: A-State	11,408

Full-Time Employees: 2,398

Fall 2019

	Faculty	Staff
A-State**	518	1,073
Beebe	103	182
Mountain Home	42	65
Newport	74	91
Mid-South	43	85
Three Rivers	38	65
System Office	0	19
ASU System	818	1,580

Facilities & Acreage

Fiscal Year 2019-2020

Campuses	# Acres	# Buildings
A-State	1,291	189
Beebe	706	69
Mountain Home	130	13
Newport	214	25
Mid-South	92	14
Three Rivers	46	14
ASU System	2,479	324

* FTE is calculated by dividing undergraduate credit hours attempted by 15 and graduate credit hours attempted by 12.

** A-State's faculty includes instructional and research faculty. Employee figures do not include Campus Querétaro, Mexico.
Source: Office of Strategic Research, ASU System



About the System

Arkansas State University System



BOARD OF TRUSTEES

The Trustees of the Arkansas State University System serve as a board of management and control of institution campuses in Jonesboro, Beebe, Mountain Home, Newport, West Memphis and Malvern.

In this capacity, the Trustees hire the ASU System president to serve as the Chief Executive Officer, approve the curriculum of the institution, annually approve an operating budget, establish policies for the efficient operation of the institution, and approve those matters which require participation of the governing board of the System. Trustees' duties include: appointing, supporting, and assessing the performance of the president; maintaining the clarity of the mission of ASU System; approving strategic plans; approving the educational program; ensuring the well-being of the students, faculty and staff; ensuring strong financial management; approving significant faculty and staff appointments and dismissals; ensuring adequate resources for quality programs; preserving institutional autonomy; interpreting the campus to the community; and interpreting the needs of society to the campus.

The governor of Arkansas appoints members of the Board of Trustees for a period of five years. The Senate of the General Assembly must confirm each appointment.

BOARD OF TRUSTEES W/TERM ENDING

- Ms. Stacy Crawford, Chair, Jonesboro - 2021
- Mr. Price Gardner, Vice Chair, Little Rock - 2022
- Ms. Christy Clark, Secretary, Little Rock - 2023
- Dr. Tim Langford, Little Rock - 2024
- Mr. Niel Crowson, Jonesboro - 2025



PRESIDENT OF ARKANSAS STATE UNIVERSITY SYSTEM

Dr. Charles L. Welch

CHANCELLOR OF ARKANSAS STATE UNIVERSITY

Dr. Kelly Dampousse

CHANCELLOR OF ASU-BEEBE

Dr. Jennifer Methvin

CHANCELLOR OF ASU-MOUNTAIN HOME

Dr. Robin Myers

CHANCELLOR OF ASU-NEWPORT

Dr. Sandra Massey

CHANCELLOR OF ASU MID-SOUTH

Dr. Debra West

CHANCELLOR OF ASU THREE RIVERS

Dr. Steve Rook

501 Woodlane Street, Suite 600
Little Rock, AR 72201
(501) 660-1000
www.asusystem.edu

VISION AND MISSION STATEMENTS

Vision: The Arkansas State University System will create better educated citizens prepared for a global and technological society by providing quality undergraduate and graduate education, useful research and dedicated public service.

Mission: *The mission of the Arkansas State University System is to contribute to the educational, cultural, and economic advancement of Arkansas by providing quality general undergraduate education and specialized programs leading to certificate, associate, baccalaureate, masters, professional and doctoral degrees; by encouraging the pursuit of research, scholarly inquiry and creative activity; and by bringing these intellectual resources together to develop the economy of the state and the education of its citizens throughout their lives.*

Each component of the Arkansas State University System will be characterized by:

-A supportive learning environment; personal development, leadership and service opportunities; and facilities, technologies and support necessary to meet the needs of students, faculty and staff;

-Racial, ethnic, gender and cultural diversity in the faculty, staff and student body, supported by practices and programs that embody the ideals of an open, democratic, and global society;

-Instructional technologies, student support services, and on-line and distance education to advance the purposes of teaching and learning;

-A commitment to sharing human, physical, information and other resources among system components, and with state agencies, schools and higher education institutions, to expand and enhance programs and services available to the citizens of Arkansas.

Arkansas State University

Dr. Kelly Damphousse, Chancellor since 2017

Arkansas State University Mission Statement:
Arkansas State University educates leaders, enhances intellectual growth and enriches lives.

Arkansas State University is located in Jonesboro. Jonesboro is the fifth-largest city in the state with a trade, cultural and medical center for a market area of more than a half million people.

HISTORY

Arkansas State University (A-State) was established in 1909 as a state agriculture school. The institution opened as a vocational high school in 1910 and changed to State Agricultural and Mechanical College in 1925. Authority to extend the curriculum, offer senior college work and grant degrees was given to the institution by the legislature in 1925. Senior college work was initiated in 1930, and the first bachelor's degrees were granted in 1931. In 1933, the legislature changed the name of the college to Arkansas State College. Master's degree graduate programs were initiated in 1955. Arkansas State College was granted university status in July 1967, with the first doctoral program added in 1992. The university established a residential location in Mexico, Campus Querétaro, which recorded its first class in 2017.

Since 1909, the institution that evolved into A-State has been served by thirteen presidents/chancellors.

Previous presidents/chancellors and their terms of service were:

- ◆ Mr. V.C. Kays, 1909-43; ◆ Dr. Horace Thompson, 1943-45;
- ◆ Dr. William J. Edens, 1946-51; ◆ Dr. Carl R. Reng, 1951-75;
- ◆ Dr. Ross Pritchard, 1975-78; ◆ Mr. Carl Whillock, 1978-80;
- ◆ Mr. Ray Thornton, 1980-84; ◆ Dr. Eugene Smith, 1984-92;
- ◆ Dr. John N. Mangieri, 1992-94; ◆ Dr. Leslie Wyatt, 1995-2006;
- ◆ Dr. Robert L. Potts, 2006-2010; ◆ Dr. Tim Hudson, 2012-2016

Source: Office of Institutional Effectiveness, Arkansas State University

CHANCELLOR'S CABINET

- Dr. Erika Chudy – University Advancement (*Interim*)
- Dr. Len T. Frey – Finance & Administration
- Dr. Maurice Gipson – Diversity & Community Engagement
- Mr. Terry Mohajir – Intercollegiate Athletics
- Dr. Martha Spack – Dean of Students
- Dr. Thilla Sivakumaran – Global Engagement & Outreach
- Dr. Brian Terry – Enrollment Management
- Dr. Alan Utter – Academic Affairs & Research

OFFICE OF ADMISSIONS

P.O. Box 1800
State University, AR 72467

OFFICE OF INTERNATIONAL PROGRAMS

P.O. Box 2230
State University, AR 72467

WEBSITE

AState.edu

PROGRAMS OF STUDY

Arkansas State University offers programs at the doctoral, specialist, master's, bachelor's and associate degree levels through the colleges of Agriculture, Neil Griffin College of Business, Education & Behavioral Science, Engineering & Computer Science, Liberal Arts & Communication, Nursing & Health Professions, Sciences & Mathematics, Undergraduate Studies and Graduate School. Additionally, A-State offers degree programs at Beebe, Mountain Home, West Memphis and online.

ACCREDITATION

In order to maintain the highest quality in all its programs, A-State actively seeks evaluation from accreditation visits and program reviews to monitor academic quality. Academic programs are accredited by the regional accrediting agency for all programs. Individual programs are accredited by specialized accrediting agencies for the respective programs.

Accrediting Organizations: Higher Learning Commission; AACSB International; Accreditation Commission for Education in Nursing; American Chemical Society; Accrediting Council on Education in Journalism and Mass Communications; Commission on Accreditation of Allied Health Education Programs; Commission on Accreditation in Physical Therapy Education; Commission on Accreditation of Athletic Training Education; Council for the Accreditation of Counseling and Related Education Programs; Council for the Accreditation of Educator Preparation; Council on Academic Accreditation in Audiology and Speech-Language Pathology; Council on Accreditation of Nurse Anesthesia; Council on Rehabilitation Education; Council on Social Work Education; Engineering Accreditation Commission of the Accreditation Board for Engineering and Technology, Inc.; Joint Review Committee on Education in Diagnostic Medical Sonography; Joint Review Committee on Education in Nuclear Medicine Technology; Joint Review Committee on Education in Radiologic Technology; National Accrediting Agency for Clinical Laboratory Sciences; National Alliance of Concurrent Enrollment; National Association of Schools of Art and Design; National Association of Schools of Music; National Association of Schools of Public Affairs and Administration; National Association of School Psychologists; National Association of Schools of Theatre; National Council for Accreditation of Teacher Education; National League for Nursing Accrediting Commission; Network of International Business Schools.

Arkansas State University-Beebe

Dr. Jennifer Methvin, Chancellor since 2018

Arkansas State University-Beebe Mission Statement:
Transforming lives through quality learning experiences.

HISTORY

As the oldest two-year college in the state, ASU-Beebe has delivered quality, affordable education in Central Arkansas since its founding in 1927. ASU-Beebe is continuing in its 93rd year, and has been affiliated with the Arkansas State University System since 1955.

ASU-Beebe has a recognized reputation for providing quality, affordable education and technical training programs to its surrounding communities from its campuses located in Beebe, Heber Springs, Searcy, at Little Rock AFB and Online. The Beebe campus is located 31 miles north of Little Rock. ASU-Beebe is the third largest community college in the state, and until 2019 was the only Arkansas two-year college with on-campus residence halls. These residence halls are living and learning facilities that provide students from across the state options to attend one of the unique programs only available at ASU-Beebe. ASU-Beebe positively impacts the economy of Central Arkansas, contributing to the regional economy through its operations, capital spending, workforce training and industry partnerships.

CORE VALUES

While strengthening our practice of being student-centered, we will guide our internal conduct as well as our relationships with those we serve by applying the values of integrity, diversity, quality, community and student success.

STRONG FROM THE START:

Arkansas State University-Beebe is committed to providing students and employees the resources and support they require to be successful. From applicant through graduate, the College will seek to ensure students have the information and support services they need to make informed decisions about their educational endeavors. Likewise, the College will provide employees with the onboarding, mentoring, and professional development opportunities necessary to fulfill their responsibilities to the students they serve.

Source: Office of Institutional Effectiveness, Arkansas State University-Beebe

POLICIES, PRACTICES, AND PROCEDURES TO BE ONE COLLEGE (P32B1):

While recognizing and valuing the uniqueness and strengths of individual campuses, Arkansas State University-Beebe is committed to a one-college approach to serving students. As such, the College will leverage our collective strengths to focus on consistent application of policy, practice, and procedures across all locations, programs, and services to ensure overall student success.

ASUBE CONNECTED

Arkansas State University-Beebe is committed to having a positive impact on the quality of life outside the classroom; to ensuring students are prepared to enter and compete in an economy that is increasingly global and competitive; to embracing a culture of collegiality where employees are accountable for their behavior and job performance; to being an active participant in our communities by participating in community events, hosting events on campus that draw community members to us, and providing the training that our workforce and industry partners need.

PROGRAMS OF STUDY

ASU-Beebe's faculty and staff are devoted to academic excellence, and their achievements are reflected through programs which are continually ranked among the top in Arkansas and competitive with similar programs across the nation. In fact, the Aspen Institute has ranked ASU-Beebe in the top 150 community colleges in the nation five times since the ranking began in 2011. Additionally, ASU-Beebe has 17 programs that are fully accredited by national boards or professional associations. ASU-Beebe currently offers associate degrees and certificates in more than 60 programs and is continually working to expand 2 + 2 transfer agreements with four-year institutions to establish clear degree paths for its graduates.

ASU-Beebe offers several unique programs not found at any other institution in the state including the #1 ranked John Deere Agriculture Technology program in the nation for four consecutive years. Other unique programs include the only

veterinary technician program in Arkansas, the only upholstery training program, and the only Associate of Fine Arts in Music, Theater, and Graphic Design programs available at any two-year college in the state. ASU-Beebe has a long history as a leader in the state for vocational and technical education. In addition to the associate degrees, the college offers certificates of proficiency and one-year technical certificates in high-wage high-demand fields designed to prepare students to meet the needs of today's rapidly evolving industry and workforce. Its Division of Career Education programs train students on state-of-the-art software and equipment, and partner with area industry professionals to keep students informed on the fast-changing needs of industry. In addition to its credit students, ASU-Beebe provides the communities with adult education, continuing education and workforce development programs.

ARKANSAS STATE UNIVERSITY-BEEBE

P.O. Box 1000
Beebe, AR 72012-1000
(501) 882-3600
www.asub.edu

ACCREDITATION

ASU-Beebe is accredited by the Higher Learning Commission; Association of Technology, Management, and Applied Engineering (ATMAE); Automotive Service Excellence Education Foundation (ASE); National Institute for Metalworking Skills (NIMS); National Alliance of Concurrent Enrollment Partnerships (NACEP); Commission on Accreditation of Allied Health Education Programs CAAHEP); Committee on Accreditation of EMS Professions (COAEMSP); Arkansas Department of Health, Section of EMS and Trauma; HVAC Excellence; National Accrediting Agency for Clinical Laboratory Sciences (NAACLS); American Society of Health-System Pharmacists (ASHP); Accreditation Council for Pharmacy Education (ACPE); Arkansas State Board of Nursing (ARSBN); American Veterinary Medical Association (AVMA); Committee on Veterinary Technician Education and Activities (CVTEA); and the National Center for Construction Education and Research (NCCER).

Arkansas State University-Mountain Home



Dr. Robin Myers, Chancellor since 2012

Arkansas State University-Mountain Home Mission Statement:
The mission of ASUMH is to LEAD through educational opportunities.

*Lifelong Learning,
Enhanced Quality of Life,
Academic Accessibility, and
Diverse Experiences*

HISTORY

In 1991, the Arkansas General Assembly created technical colleges from the Baxter County Vocational-Technical Center and the North Arkansas Community/Technical College Center in Mountain Home. Mountain Home Technical College was established on July 1, 1991. In 1992, the Mountain Home Technical College agreed to seek affiliation with Arkansas State University to form a sister campus. On July 1, 1993, Mountain Home Technical College became Arkansas State University Mountain Home Technical College.

Arkansas State University-Mountain Home (ASUMH) was established on July 1, 1995 due to the commitment of the residents of Baxter County and the cooperation of the Department of Higher Education and Arkansas State University in Jonesboro.

ASUMH has an open door admissions policy. This policy is designed to enhance access to educational opportunities. Standards of quality are maintained and students are required to remove deficiencies before entering certain programs or courses.

Nestled in the beautiful Ozark Mountains, 156 miles north of Little Rock, the environment at ASUMH encourages free expression, leadership and innovation. Small class size means personal attention and support from instructors. Additionally, the construction of a new campus accommodating 1,200 students offers an even more appealing setting for students to pursue higher education.

PROGRAMS OF STUDY

An Associate of Arts is offered for those students needing maximum flexibility in the selection of a course of study to meet individual employment and educational needs. It can be designed to meet the General Education requirements for those individuals planning to transfer to a four-year institution in order to complete a bachelor's degree.

Associates of Applied Science are offered in Automotive Systems Repair, Business Administration, Computer Technology and Networking, Criminal Justice, Cybersecurity, Digital Design, Funeral Science, Hospitality Management, Mechatronics, Paramedic Technology, Programming/Mobile Development, Registered Nursing, and Welding Technology. Also offered is an Associate of General Studies and an Associate of Science in Business, Criminal Justice, Agricultural & Natural Resources, Education, and an Associate of Science in Language Arts and Science.

Technical Certificates are offered in Accounting/Finance, Automotive Systems Repair, Construction Technology, EMS, Funeral Directing, General Business, Health Professions, Health Sciences, Hospitality, Information Systems Technology, Machining Technology, Mechatronics, Paramedic Technology, Practical Nursing, Pre-Nursing, Pre-Physical Therapist Assistant, Professional Medical Coding, Programming/Mobile Development, Web Development and Welding.

A-State and ASUMH have formed a partnership to offer various bachelor's degree programs through the University Center on the Mountain Home campus. The bachelor's degrees are offered by building on the existing Associate of Arts degree offered at ASUMH. The Center currently offers bachelor's degrees in Early Childhood Education, Middle-Level Education, Special Education, Nursing, Physical Therapist Assistant, Management and Technology.

ACCREDITATION

ASUMH is accredited by the Higher Learning Commission, the American Board of Funeral Service Education, and the Arkansas State Board of Nursing.

ARKANSAS STATE UNIVERSITY-MOUNTAIN HOME

1600 S. College Street
Mountain Home, AR 72653
(870) 508-6100
www.asumh.edu

ASU-Mountain Home Campus



Arkansas State University-Newport

Dr. Sandra Massey, Chancellor since 2013

Arkansas State University-Newport Mission Statement:

ASU-Newport provides an accessible, affordable, quality education that transforms the lives of our students, enriches our communities and strengthens the regional economy.

HISTORY

The White River Vocational Technical School opened in Newport, Arkansas, in 1975. In 1991, the Arkansas Legislature passed Act 1244 merging the White River Vocational Technical School with ASU-Beebe. In 1992, it became ASU-Beebe/Newport, and in 1997, it became ASU-Newport. In April 2000, the Arkansas Higher Education Coordinating Board gave approval for ASU-Newport to become a standalone college. In February 2001, the Arkansas Legislature passed Act 297 creating a separate budget appropriation for ASU-Newport effective July 2001. The Higher Learning Commission granted ASU-Newport initial accreditation for stand-alone status for five years in August 2002. In April 2007, ASU-Newport received ten-year accreditation status. In 2008, the ASU Technical Centers in Jonesboro and Marked Tree became campuses of ASU-Newport. The satellite campuses are now known as ASU-Newport at Jonesboro and ASU-Newport at Marked Tree. In 2013, ASU-Newport added instructional locations at the Arkansas Department of Corrections Grimes and McPherson Units. In 2017, ASU-Newport reaffirmed its accreditation status with the HLC.

PROGRAMS OF STUDY

ASU-Newport is committed to providing students the support and resources they need to succeed. From application to graduation, programs and services are designed to assist students (both traditional and nontraditional) in determining and achieving their educational, personal and career goals.

ASU-Newport offers multiple degree options and methods of delivery. Awards include technical certificates, certificates of proficiency, and associate degrees. ASU-Newport continuously works with four-year institutions throughout Arkansas to ensure well-articulated transfer pathways for its students who desire to pursue a bachelor's degree. ASU-Newport also works hand-in-hand with local industry to provide high-demand programming to support a skilled workforce.

It is ASU-Newport's goal to meet every student where they are and provide them with options and services necessary for success. ASU-Newport offers online courses and degrees, facilities Adult Basic Education programming at a variety of locations throughout Northeast Arkansas, has a well-established prison education program, partners with 13 area high schools to provide concurrent credit, and has a secondary center for high school juniors and seniors to earn certificates while completing their diplomas.

ASU-Newport's programs of study include: Advanced Manufacturing, Agriculture Technology, Automotive Service Technology, Business, Certified Nursing Assistant, Collision Repair Technology, Commercial Driver Training (the largest program in the state), Computer Networking Technology, Cosmetology and Aesthetics, Criminal Justice, Diesel Technology, Education, Energy Control Technology, Emergency Medical Technician/Paramedic, General Education, General Technology, High Voltage Lineman Technology, Hospitality Services, Industrial Maintenance, Nursing (PN, LPN to RN, and traditional RN), Patient Care Technician, Phlebotomy, Pre-Health Professions, Surgical Technology and Welding.

ARKANSAS STATE UNIVERSITY-NEWPORT

7648 Victory Blvd.
 Newport, AR 72112
 (870) 512-7800
 www.asun.edu

ACCREDITATION

ASU-Newport is accredited by the Higher Learning Commission (HLC), the Commission on Accreditation of Allied Health Education Programs (CAAHEP), and the National Alliance of Concurrent Enrollment Partnerships (NACEP). In addition, several Boards have oversight and approval of ASU-Newport's programs including the Arkansas State Board of Nursing, the Office of Long Term Care, the Arkansas Department of Health Section of EMS, the Arkansas State Board of Cosmetology, and the Arkansas Department of Health.

ASU-Newport's Student/Community Center



Arkansas State University Mid-South



Dr. Debra West, Chancellor since 2015

Arkansas State University Mid-South Mission Statement:

The mission of Arkansas State University Mid-South is to enrich lives through high quality educational programming that fosters student success, workforce development, and lifelong learning.

HISTORY

The evolution of ASU Mid-South in West Memphis began in 1991 following the Arkansas Legislature's approval of Act 1244. The legislation provided for the conversion of 14 of Arkansas' vocational-technical schools into technical colleges, branches of four-year institutions, or community colleges with the additional support of a local millage. Ten "vo-techs," including Mid-South, accepted the conversion challenge.

The decision could easily be described as a "leap of faith," considering the early history of the institution. In operation since 1979, the school experienced little growth or support during its first 12 years of existence. At the time of its conversion to a technical college, Mid-South served fewer than 100 students annually and offered primarily adult education classes, truck driver training, practical nursing, and data processing/clerical support courses.

Section 22 of Act 1244 allowed newly-formed technical colleges to convert to community colleges with the passage of a local millage and approval of the State Board of Higher Education. Mid-South became the only vocational technical school to take this additional step. The Board of Trustees considered conversion to a community college essential to address the weak economy, unemployment, and alarmingly low college-attendance rate in Crittenden County. The State Board of Higher Education approved the application for conversion on October 23, 1992. A steering committee proposed a county-wide levy of four mills, a recommendation ratified by the Mid-South Technical College Board of Trustees. The voters of Crittenden County put their stamp of approval on the effort with overwhelming support on February 16, 1993. Later that year, the State Board of Higher Education granted the College authority to offer its first degree and became Mid-South Community College.

Source: Office of Institutional Effectiveness, Arkansas State University Mid-South

PROGRAMS OF STUDY

ASU Mid-South offers degree and certificate programs to meet student and community needs. Program courses address general education knowledge as well as behaviors needed for good citizenship and successful careers.

Programs offered are Aviation Technology, Business, Diesel Technology, Digital Media, Emergency Tech, General Education, Hospitality, Information Technology, Machine Technology, Mechatronics, Nursing Assistant, Respiratory Therapy, Teaching, and Welding Technology.

ARKANSAS STATE UNIVERSITY MID-SOUTH

2000 West Broadway
West Memphis, AR 72301
(870) 733-6722
www.asumidsouth.edu

ACCREDITATION

ASU Mid-South is accredited by the Higher Learning Commission. ASU Mid-South's Nursing Assistant Program is certified by the Arkansas Department of Human Services Division of Medical Services Office of Long Term Care. The Emergency Medical Assistant Program is certified by the Arkansas Department of Health Section of Emergency Medical Services. The Pharmacy Technology program is accredited by the American Society of Health-System Pharmacists. The Respiratory Care program is accredited by the Commission on Accreditation for Respiratory Care (CoARC). The Aviation Maintenance Technology program is certified by the Federal Aviation Administration (FAA). The Machining Technology program is accredited by the National Institute of Metalworking Skills (NIMS).



Arkansas State University Three Rivers



Dr. Steve Rook, Chancellor since 2016

Arkansas State University Three Rivers Mission Statement:

Arkansas State University Three Rivers is a public, two-year institution of higher education that continually identifies and addresses the changing learning needs of the communities it serves

HISTORY

The College began as Ouachita Vocational Technical School (OVTS) as authorized by the State Board of Education in July 1969 to serve the vocational training needs of a five-county area surrounding Malvern and Hot Spring County. In 1985, OVTS was designated as a high school vocational center as the state attempted to make vocational education accessible to all Arkansas high school students. In 1988, the Arkansas Business Council Foundation recommended transferring postsecondary vocational programs from the State Board of Education to the State Board of Higher Education, expansion of general education programs in vo-tech schools, technical workforce training, and converting existing vo-tech schools into colleges along with support and funding.

The 1991 Arkansas Legislature responded to the recommendations with Act 1244, Two-Year Postsecondary Education Reorganization Act of 1991. OVTS was not in the original legislation; but, at the urging of local business leaders and educators, Senator George Hopkins introduced separate legislation to redesignate OVTS as Ouachita Technical College. The legislation (Act 617 of 1991) was signed into law prior to Act 1244, making Ouachita Technical College Arkansas' first technical college. The College received initial accreditation in 1996 and has continuing accreditation with the Higher Learning Commission.

The Board of Trustees approved a name change in 2010 to communicate the College's broad mission of higher education and service. In July 2011, the name of the College was officially changed to College of the Ouachitas. In February 2019, the college signed a merger agreement with Arkansas State University System, and announced a new name for the institution in September 2019. On January 1, 2020, College of the Ouachitas became Arkansas State University Three Rivers.

PROGRAMS OF STUDY

Programs and services provide associate degree transfer programs that prepare learners to succeed at universities and in the workforce. Academic and support services respond to personal, social, and career planning needs. Customized training and services assist businesses and individuals and aid economic development.

The Associate of Arts and Associate of Science Business are for those planning to transfer to a four-year institution. Associates of Applied Science are offered in Computer Information Systems, Criminal Justice, General Technology, Apprenticeship Trades, Mechatronics, Welding Technology, Accounting, Management, Medical Office Administration, Office Administration, Early Childhood Education, and Registered Nursing. Certificates are offered in Practical Nursing, Electrical Apprenticeship, Plumbing Apprenticeship, and Truck Driver Training.

ARKANSAS STATE UNIVERSITY THREE RIVERS

One College Circle
Malvern, AR 72104
(501) 337-5000
www.asutr.edu

ACCREDITATION

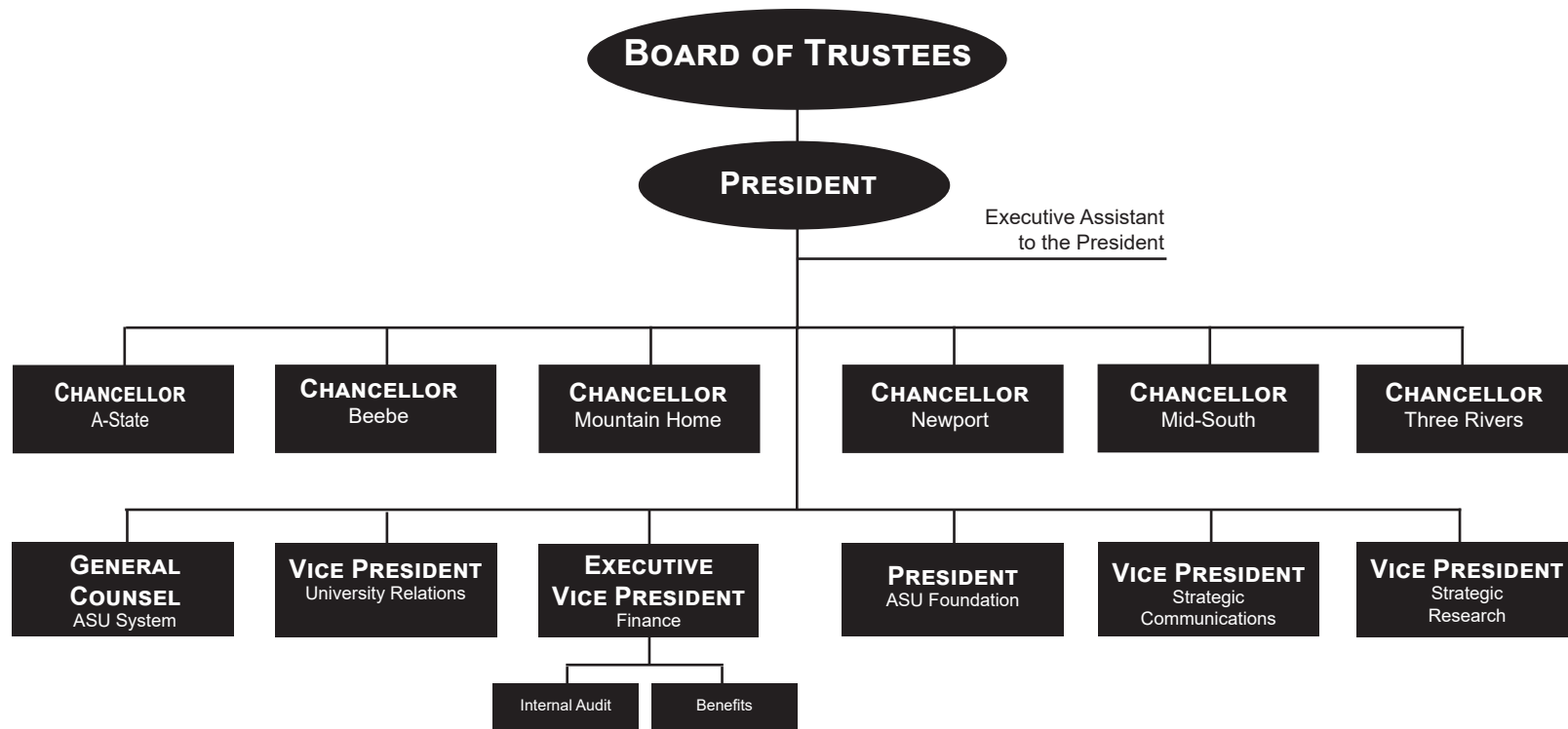
Arkansas State University Three Rivers is accredited by the Higher Learning Commission. Program accreditations include Automotive Service Technology Program, National Automotive Technician Education Foundation and the Concurrent Enrollment Program, National Alliance of Concurrent Enrollment Partnerships. Program approvals include Practical and Registered Nursing Programs, Arkansas State Board of Nursing. The College also has institutional approval for Veterans' educational benefits through the Arkansas State Approving Agency of Veterans.



Arkansas State University System



2019-2020 Organizational Structure



Institutional Classifications

Southern Regional Education Board (SREB) Institutional Categories & Carnegie Classifications

SREB CLASSIFICATIONS*

The SREB system for categorizing postsecondary education institutions is based upon a number of factors relevant to determining resource requirements. Institutions are classified based on size (numbers of degrees or full-time-equivalent enrollment), role (types of degrees), breadth of program offerings (number of program areas in which degrees are granted), and comprehensiveness (distribution of degrees across program areas).

Institutions are assigned to categories for a report year using the previous academic year's data on program completions. To keep the statistical comparison groups relatively stable over time and to assure that institutions change categories only when their measures on a criterion are relatively stable, institutions change categories when they meet the criterion for another category for the third consecutive year.

◆ **Four-Year 3:** Institutions awarding at least 100 master's, education specialist, post-master's, or doctoral degrees with master's, education specialist, and post-master's degrees distributed among at least 10 CIP categories (2-digit classification). (*Arkansas State University*)

◆ **Two-Year 2:** Institutions awarding associate's degrees and offering college transfer courses with FTE enrollment of 2,000 to 4,999; some certificates and diplomas also may be awarded. (*Arkansas State University-Beebe*)

◆ **Two-Year 3:** Institutions awarding associate's degrees and offering college transfer courses with FTE enrollment of less than 2,000; some certificates and diplomas also may be awarded. (*Arkansas State University-Mountain Home, Arkansas State University-Newport, Arkansas State University Mid-South, and Arkansas State University Three Rivers*)

SREB ARKANSAS PEER INSTITUTIONS

◆ **Four-Year 3:**
Arkansas Tech University
University of Central Arkansas

◆ **Two-Year 2:** None

SREB ARKANSAS PEER INSTITUTIONS (CONT.)

◆ **Two-Year 3:**
Arkansas Northeastern College
Black River Technical College
Cossatot Community College of the University of Arkansas
East Arkansas Community College
National Park College
North Arkansas College
Ozarka College
Phillips Community College of the University of Arkansas
South Arkansas Community College
Southeast Arkansas College
Southern Arkansas University Tech
University of Arkansas Community College at Batesville
University of Arkansas Community College at Hope-Texarkana
University of Arkansas Community College at Morrilton
University of Arkansas Community College at Rich Mountain

CARNEGIE CLASSIFICATIONS*

The Carnegie Commission developed a classification of colleges and universities to support its program of research and policy analysis. They are organized around three fundamental questions: what is taught (*Undergraduate & Graduate Instructional Programs*), who are the students (*Enrollment Profile & Undergraduate Profile*), and what is the setting (*Size & Setting*).

◆ **Basic:**
Doctoral Universities: High Research Activity: Arkansas State University

Associate's Colleges: Mixed Transfer/Career & Technical-Mixed Traditional/Nontraditional: Arkansas State University-Beebe, Arkansas State University-Mountain Home, Arkansas State University-Newport

Associate's Colleges: High Transfer-High Nontraditional: Arkansas State University Mid-South

Associate's Colleges: High Career & Technical-High Nontraditional: Arkansas State University Three Rivers

CARNEGIE CLASSIFICATIONS (CONT.)

◆ **Size & Setting:**
Four-Year, Medium, Primarily Residential: Arkansas State University

Two-year, Medium: Arkansas State University-Beebe

Two-year, Small: Arkansas State University-Mountain Home, Arkansas State University-Newport, Arkansas State University Mid-South, Arkansas State University Three Rivers

◆ **Enrollment Profile:**
High Undergraduate: Arkansas State University

Exclusively Undergraduate Two-Year: Arkansas State University-Beebe, Arkansas State University-Mountain Home, Arkansas State University-Newport, Arkansas State University Mid-South, Arkansas State University Three Rivers

◆ **Undergraduate Profile:**
Four-Year, Medium Full-Time, Selective, Higher Transfer-In: Arkansas State University

Two-Year, Mixed Part/Full-Time: Arkansas State University-Beebe, Arkansas State University-Mountain Home, Arkansas State University-Newport

Two-Year, Higher Part-Time: Arkansas State University Mid-South, Arkansas State University Three Rivers

◆ **Undergraduate Instructional Program:**
Professions Plus Arts & Sciences, Some Graduate Coexistence: Arkansas State University

Associate's Colleges: Mixed Transfer/Career & Technical: Arkansas State University-Beebe

Associate's Colleges: High Career & Technical: Arkansas State University-Mountain Home, Arkansas State University-Newport, Arkansas State University Mid-South, Arkansas State University Three Rivers

◆ **Graduate Instructional Program:**
Research Doctoral: Professional-Dominant: Arkansas State University

*The most recent SREB and Carnegie Classifications are based on time-specific snapshots of institutional attributes and behavior based on data from 2017/2018. Sources: Southern Regional Education Board and Indiana University Center for Postsecondary Research



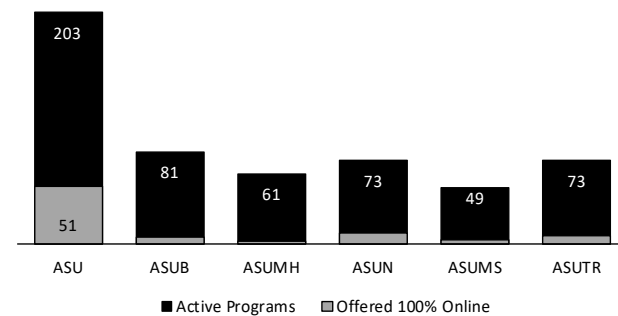
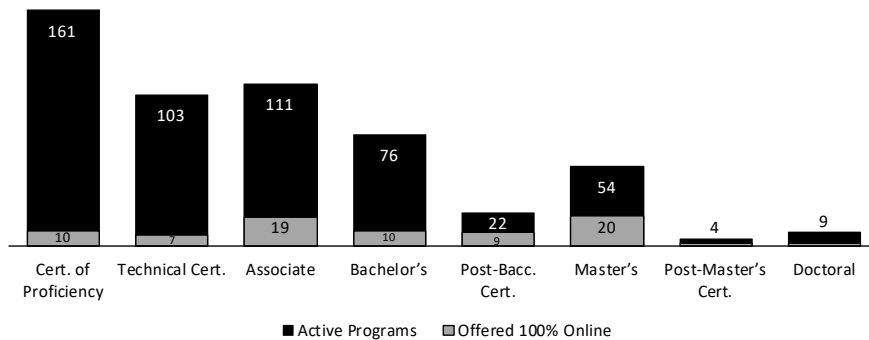
Academic Programs

Academic Programs By Level and Distance Education



	A-State	ASUB	ASUMH	ASUN	ASUMS	ASUTR	Total	Percent of Category					
								A-State	ASUB	ASUMH	ASUN	ASUMS	ASUTR
Total Active Programs	203	81	61	73	49	73	540						
Cert. of Proficiency	22	26	19	29	27	38	161	10.8%	32.1%	31.1%	39.7%	55.1%	52.1%
Technical Cert.	2	29	21	24	7	20	103	1.0%	35.8%	34.4%	32.9%	14.3%	27.4%
Associate	14	26	21	20	15	15	111	6.9%	32.1%	34.4%	27.4%	30.6%	20.5%
Bachelor's	76						76	37.4%					
Post-Bacc. Cert.	22						22	10.8%					
Master's	54						54	26.6%					
Post-Master's Cert./EdS	4						4	2.0%					
Doctoral	9						9	4.5%					

	A-State	ASUB	ASUMH	ASUN	ASUMS	ASUTR	Total	Percent of Category					
								A-State	ASUB	ASUMH	ASUN	ASUMS	ASUTR
Offered 100% Online	51	6	2	10	3	7	79	25.1%	7.4%	3.3%	13.7%	6.1%	9.6%
Cert. of Proficiency	6	0	0	2	0	2	10	27.3%	0.0%	0.0%	6.9%	0.0%	5.3%
Technical Cert.	0	2	0	2	1	2	7	0.0%	6.9%	0.0%	8.3%	14.3%	10.0%
Associate	2	4	2	6	2	3	19	14.3%	15.4%	9.5%	30.0%	13.3%	20.0%
Bachelor's	10						10	13.2%					
Post-Bacc. Cert.	9						9	40.9%					
Master's	20						20	37.0%					
Post-Master's Cert./EdS	2						2	50.0%					
Doctoral	2						2	22.2%					



Source: Arkansas State University System Program Inventory, as of February 2020

Academic Program Inventory



Program Title	A-State	ASUB	ASUMH	ASUN	ASUMS	ASUTR	Program Title	A-State	ASUB	ASUMH	ASUN	ASUMS	ASUTR
2-D Mechanical CAD Drafting		CP					Automotive Service Technology				TC,A		CP
A+ Computer Technician			CP				Automotive Systems Repair			CP,TC,A			
Accounting	A,B,M				CP	TC,A	Automotive Technology		CP,TC,A				
Accounting & Finance			TC				Automotive Transmissions and Axles				CP		
Addiction Studies	PBC						Aviation Airframe Maintenance Technology						TC
Advanced Agricultural Mechatronics		CP					Aviation Maintenance Technology						A
Advanced Emergency Medical Technician					CP		Aviation Powerplant Maintenance Technology						TC
Advanced Manufacturing Technology				TC			Biological Sciences	B,M					
Advanced Medical Imaging & Therapy PBC							Biology	B,M					
Aesthetics				CP			Biotechnology	B,M					
Agricultural Mechatronics		CP					Building Level Administration	PBC					
Agricultural Studies	B						Business		A	A	A	CP,TC,A	A
Agricultural Systems & Controls		TC					Business Administration	B,M		A		A	
Agriculture	M	TC,A					Business Economics	B					
Agriculture and Natural Resources			A				Business Operations				CP		
Agriculture Business	B						Business Systems Networking: Cisco						CP
Agriculture Equipment Technology		A					Business Technology		A		TC,A		CP
Agriculture Operations				TC			Business Technology 4-12	B					
Agriculture Technology				A			Certified Nursing Assistant				CP		
Agronomy				CP			Chemistry	B,M					
Air Conditioning		CP					Cisco Networking			CP			
Air Conditioning, Heating, & Refrigeration Technology	TC						Civil Engineering	B					
Animal Science	B						Clinical Laboratory Science	A,B					
Apprentice Preventative Maintenance Technician				CP			Clinical Mental Health Counseling	PBC					
Apprenticeship Trades						A	CNC Machining & Fabrication						CP
Art	B						CNC Operations & Programming						CP
Athletic Training	M						CNC Operator				CP		
Auto Body Repair		CP,TC					College Student Personnel Services	M					
Automobile Upholstery		CP					Collision Repair & Refinishing Technology				TC,A		
Automotive Engine Performance				CP			Commercial Truck Driving				CP		
Automotive Heating & Air Conditioning				CP			Communication Sciences & Disorders	B					
Automotive Mechanical Systems				CP			Communication Studies	B,M					

Source: Arkansas State University System Program Inventory. A=Associate's, B=Bachelor's, CP=Cert. of Proficiency, D=Doctoral, EdS=Educational Specialist, M=Master's, PBC=Post-Bacc Cert., PMC=Post-Master's Cert, TC=Technical Certificate

Academic Program Inventory



Program Title	A-State	ASUB	ASUMH	ASUN	ASUMS	ASUTR	Program Title	A-State	ASUB	ASUMH	ASUN	ASUMS	ASUTR
Communicative Disorders	M						Curriculum Director	PBC					
Community Corrections		CP,TC					Cyber Security	PBC					
Community Paramedic			CP				Cybersecurity			A			
Computed Tomography	CP						Data Science	PBC					
Computer & Networking Fundamentals		CP					Debate and Forensics	CP					
Computer Aided Drafting & Design		A					Diesel Maintenance Technology						TC
Computer and Information Technology	A						Diesel Technology		CP,TC		TC		
Computer Coding		CP,TC,A					Dietetics	B					
Computer Fundamentals		CP					Digital Design			A			
Computer Information Systems		TC,A				TC,A	Digital Humanities	CP					
Computer Information Technology	B						Digital Innovations	B					
Computer Networking Technology				TC,A			Digital Media						A
Computer Programming						CP	Disaster Preparedness & Emergency Mgmt	A,B,M					
Computer Repair						CP	Doctor of Nursing Practice	D					
Computer Science	B,M						Dyslexia	PBC					
Computer Science Education	PBC,M						Early Childhood Development				CP,TC		
Computer Systems & Networking Technology		TC,A					Early Childhood Education	M	CP,TC,A				CP,TC,A
Computer Technology and Networking			A				Early Childhood Services	M					
Computerized Machining Technology		CP,TC,A					Economics	B					
Construction Technology						CP	Education		A	A	A		
Construction Welding				CP			Education (K-6; 4-8)						A
Corporate Media	CP						Educational Leadership	M,EdS,D					
Cosmetology				TC		TC	Educational Theory & Practice	M					
Cosmetology Instructor						TC	Electrical Apprenticeship						CP,TC
Cosmetology Instructor Trainee				TC			Electrical Apprenticeship, Level I						CP
Creative Media Production	B						Electrical Apprenticeship, Level II						CP
Crime Scene Investigation				CP,TC,A			Electrical Apprenticeship, Level III						CP
Criminal Correction Specialist						CP,TC	Electrical Apprenticeship, Level IV						CP
Criminal Investigation Science		CP,TC					Electrical Engineering	B					
Criminal Justice	M	A	CP,A	CP,TC,A		CP,TC,A	Elementary Education	B					
Criminology	B						Emergency Medical Service		A				
Curriculum & Instruction	M						Emergency Medical Services			TC			A

Source: Arkansas State University System Program Inventory. A=Associate's, B=Bachelor's, CP=Cert. of Proficiency, D=Doctoral, EdS=Educational Specialist, M=Master's, PBC=Post-Bacc Cert., PMC=Post-Master's Cert, TC=Technical Certificate

Academic Program Inventory



Program Title	A-State	ASUB	ASUMH	ASUN	ASUMS	ASUTR	Program Title	A-State	ASUB	ASUMH	ASUN	ASUMS	ASUTR
Emergency Medical Technical - Basic			CP				Gifted and Talented Director	PBC					
Emergency Medical Technician		CP		CP	CP		Global Supply Chain Management	B					
Emergency Medical Technician-Basic	CP						Graphic Communication	CP					
Energy Control Technology				TC,A			Graphic Design	B		CP			
Engineering	M						Hair Care						CP
Engineering Management	M						Health Coaching	CP					
English	B,M						Health Communications	PBC					
Entrepreneurship		TC				TC	Health Communicaton	CP					
Environmental Science	B						Health Information Assistant		CP,TC				
Environmental Sciences	M,D						Health Professions			CP,TC			
Environmental Studies	B						Health Promotion	B					
Exercise Science	B,M						Health Sciences		A	TC			
Family Nurse Practitioner	PMC						Health Studies	B					TC,A
Film & Video Production					CP		Heating, Ventilation & Air Conditioning			CP,TC,A			
Finance	B						Heavy Truck Diesel Maintenance						CP
Fine Arts		A					Heritage Studies	M,D					
Flux-Core Welding Technology					CP		High Performance Computing	PBC					
Food Service Management					CP		High Voltage Lineman Technology				TC		
Free Enterprise	CP						History	B,PBC,M					
Funeral Directing			TC				Hospitality Administration		TC,A				
Funeral Services			A				Hospitality Management			TC,A			CP,TC,A
Gas Metal Arc Welding Technology					CP		Hospitality Services				CP		
Gas Metal Arc Welding			CP				Hospitality Services-Culinary Services Track				TC		
Gas Metal Arc Welding (MIG)						CP	Hospitality Services-Food Service & Management Track				TC		
Gas Tungsten Arc Welding Technology					CP		Household Upholstery		CP				
Gas Tungsten Arc Welding (TIG)						CP	Industrial Equipment Maintenance						CP
General Aviation Maintenance Technology					CP		Industrial Maintenance				CP,TC		
General Business			TC				Industrial Maintenance - Electrical				CP		
General Education	A	A	A	A	A	A	Industrial Maintenance - General				CP		
General Studies	A,B	TC,A	TC,A	TC,A	TC	TC	Industrial Robotics						CP
General Technology		A		A	A	A	Industrial Technology		CP,TC				
Gifted and Talented Creative Teacher	PBC						Information Communication Technology				CP		

Source: Arkansas State University System Program Inventory. A=Associate's, B=Bachelor's, CP=Cert. of Proficiency, D=Doctoral, EdS=Educational Specialist, M=Master's, PBC=Post-Bacc Cert., PMC=Post-Master's Cert, TC=Technical Certificate

Academic Program Inventory



Program Title	A-State	ASUB	ASUMH	ASUN	ASUMS	ASUTR	Program Title	A-State	ASUB	ASUMH	ASUN	ASUMS	ASUTR
Information Systems Technology			TC		A		Media Management	M					
Information Technology	TC						Media Ministry	CP					
Instrumental Music	B						Medical Assistant					A	
Interdisciplinary Studies	B						Medical Coding						TC
International Business	B						Medical Laboratory Technology		A				
Introduction to Air-Conditioning				CP			Medical Office Administration						TC,A
Journalism	M						Medical Office Administration & Coding						CP
Law Enforcement	A	CP,TC					Medical Terminology						CP
Law Enforcement Administration				CP,TC,A			Medical Transcription						TC
Liberal Arts & Sciences		A		A		A	Medication Assistant			CP			
Liberal Arts and Sciences	A						Micro-Computer Upgrade & Repair					CP	
Machine-Technology					CP		Microsoft Certified Professional						CP
Machining			CP,TC				Middle Level Education	B					
Machining Technology, Engineering Technician					CP		Molecular Biosciences	M					
Machining Technology, Machinist					CP		Molecular Sciences	D					
Management	B					TC,A	Multimedia Journalism	B					
Manual Machining				CP			Multi-Skills Technology		CP,TC				
Manufacturing Welding				CP			Museum Studies	CP					
Marketing	B,PBC						Music	B					
Marketing Analytics	CP						Music - Performance	M					
Mathematics	B,M						Music Education	M					
Mathematics Education	B						Nail & Skin Care						CP
Mechanical Drafting		TC					Natural Sciences				A		
Mechanical Engineering	B						Network Associate					CP	
Mechatronics			CP,TC,A			A	Network Security						CP
Mechatronics Level I					CP		Neuropsychological Testing	CP					
Mechatronics Level II					CP		Nonprofit Communication	CP					
Mechatronics Level III					CP		Nurse Anesthesia	M,D					
Mechatronics Level IV					CP		Nurse Educator	PBC					
Mechatronics Operation						CP	Nursing	A,B,M		A			
Mechatronics Practice						CP	Nursing (LPN/Paramedic to RN)						A
Mechatronics Technology			CP,TC				Nursing Administration	PBC					

Source: Arkansas State University System Program Inventory. A=Associate's, B=Bachelor's, CP=Cert. of Proficiency, D=Doctoral, EdS=Educational Specialist, M=Master's, PBC=Post-Bacc Cert., PMC=Post-Master's Cert, TC=Technical Certificate

Academic Program Inventory



Program Title	A-State	ASUB	ASUMH	ASUN	ASUMS	ASUTR	Program Title	A-State	ASUB	ASUMH	ASUN	ASUMS	ASUTR
Nursing Assistant		CP	CP		CP	CP	Professional Leadership	CP					
Occupational Therapy	D						Professional Medical Coder			CP			
Occupational Therapy Assistant	A						Professional Medical Coding			TC			
Office Administration						TC,A	Programming/Mobile Development			CP,TC,A			
Organizational Supervision	B						Psychological Science	M					
Paramedic	TC,A			TC,A			Psychology	CP,B					
Paramedic Technology			TC,A				Psychology & Counseling	EdS					
Paramedics		TC					Public Administration	M					
Patient Care Technician				CP			Public Relations and Advertising	CP					
Pharmacy Technician Science		CP,TC,A					Public Safety		TC				
Philosophy	B						Quality Technician						CP
Phlebotomy			CP	CP	CP		Radiologic Sciences	B					
Physical Education	B,M						Radiologic Sciences Administration	CP					
Physical Therapist Assistant	A						Radio-Television	M					
Physical Therapy	D						Reading	M,EdS					
Physics	B						Registered Nursing				A		
Pipe Welding						CP	Respiratory Care						A
Plant & Soil Science	B						School Counseling	M					
Play Therapy	PBC						Shielded Metal Arc Welding Technology						CP
Plumbing Apprenticeship, Level I						CP,TC	Shielded Metal Arc Welding (STICK)						CP
Plumbing Apprenticeship, Level II						CP	Social Media Management	CP					
Plumbing Apprenticeship, Level III						CP	Social Science	B,M					
Plumbing Apprenticeship, Level IV						CP	Social Work	B,M					
Political Science	B,M						Sociology	B,M					
Power Sports Engines Technology		CP,TC					Spanish for the Professions	CP					
Practical Nursing		TC	TC	TC		TC	Special Education	M					
Pre-Allied Health						TC	Special Education Director	PBC					
Pre-Health Care Studies		TC					Special Education K-12	B,M					
Pre-Health Professions				TC			Special Education Teacher	PBC					
Pre-Nursing			TC				Sport Management	B					
Nursing (Traditional Pathway)				A			Sports Administration	M					
Pre-Physical Therapy Assistant		TC					Sports Production	CP					

Source: Arkansas State University System Program Inventory. A=Associate's, B=Bachelor's, CP=Cert. of Proficiency, D=Doctoral, EdS=Educational Specialist, M=Master's, PBC=Post-Bacc Cert., PMC=Post-Master's Cert, TC=Technical Certificate

Academic Program Inventory



Program Title	A-State	ASUB	ASUMH	ASUN	ASUMS	ASUTR
Strategic Communication	M					
Strategic Communications	B					
Student Affairs	PBC					
Superintendent	PBC					
Surgical Technology				TC,A		
Swift Coding	CP					
Teaching	M					
Technology	A,B					
Theatre	B					
Truck Driver Training						CP
Truck Service and Maintenance				CP		
Veterinary Technology		A				
Vocal Music	B					
Web Development			CP,TC			
Welding				TC		CP
Welding Fabrication/Fitter					CP	
Welding General				CP		
Welding Technology		CP,TC,A	CP,TC,A			TC,A
Wildlife Enforcement		CP,TC				
Wildlife, Fisheries, and Conservation	B					
Workforce Technology			A			
World Languages & Cultures	B					

Source: Arkansas State University System Program Inventory. A=Associate's, B=Bachelor's, CP=Cert. of Proficiency, D=Doctoral, EdS=Educational Specialist, M=Master's, PBC=Post-Bacc Cert., PMC=Post-Master's Cert, TC=Technical Certificate



Degrees & Certificates Awarded

Degrees & Certificates Awarded Summary



By Fiscal Year

Degrees & Certificates Awarded - ASU System										
	2015	2016	2017	2018	2019	2015	2016	2017	2018	2019
Total Degrees/Certificates Awarded	7,805	8,222	8,687	8,897	9,413					
Certificate of Proficiency	1,326	1,380	1,629	1,708	1,721	17.0%	16.8%	18.8%	19.2%	18.3%
Technical Certificate	1,246	1,336	1,171	1,127	1,289	16.0%	16.2%	13.5%	12.7%	13.7%
Associate	1,837	2,031	2,007	1,908	1,973	23.5%	24.7%	23.1%	21.4%	21.0%
Bachelor's	1,766	1,713	1,782	1,837	1,820	22.6%	20.8%	20.5%	20.6%	19.3%
Graduate Certificate	15	23	30	93	116	0.2%	0.3%	0.3%	1.0%	1.2%
Master's	1,251	1,358	1,591	1,687	1,908	16.0%	16.5%	18.3%	19.0%	20.3%
Specialist	321	330	414	486	521	4.1%	4.0%	4.8%	5.5%	5.5%
Doctoral	43	51	63	51	65	0.6%	0.6%	0.7%	0.5%	0.6%

HISTORICAL DEGREES & CERTIFICATES AWARDED

Campuses	2015	2016	2017	2018	2019
Certificates Awarded by Campus					
A-State	15	23	31	99	125
Beebe	1,015	1,021	936	871	853
Mountain Home	324	330	420	372	336
Newport	432	576	634	774	844
Mid-South	219	316	413	319	439
Three Rivers	582	475	479	493	529
Total Certificates	2,587	2,739	2,830	2,928	3,126
Degrees Awarded by Campus					
A-State	3,763	3,964	4,404	4,647	4,854
Beebe	672	753	681	585	769
Mountain Home	272	241	241	234	185
Newport	199	238	235	228	237
Mid-South	160	127	143	139	128
Three Rivers	152	160	153	136	114
Total Degrees	5,218	5,483	5,857	5,969	6,287
Total Awards	7,805	8,222	8,687	8,897	9,413

DEGREES & CERTIFICATES AWARDED BY ETHNICITY

ASU System - Fiscal Year 2019

Ethnicity	Cert. of Prof.	Tech. Cert.	Assoc.	Bach.	Grad. Cert.	Master's	Spec.	Doct.	Total
African American	405	180	248	203	10	227	102	4	1,379
American Indian	9	8	7	3	0	14	3	0	44
Asian American	9	8	14	11	1	19	2	2	66
Hispanic American	64	54	74	42	1	59	7	0	301
Hawaiian/Pacific Islander	0	0	1	0	0	1	1	0	3
White American	1,175	990	1,549	1,440	100	365	381	55	7,104
Two or More Races	39	34	54	38	2	21	5	0	192
Ethnicity Unknown	5	1	4	10	1	55	20	0	96
International	15	14	22	73	1	98	0	4	226

Source: NCES IPEDS (ASUTR will revise IPEDS completions in 2020-21 to reflect 1 additional associate's degree awarded.)



Enrollment

System Enrollment Summary



Academic Year 2018 - 2019

Student Enrollment													
	Campuses							Percentage of System Total					
	A-State*	ASUB	ASUMH	ASUN	ASUMS	ASUTR	Total	A-State	ASUB	ASUMH	ASUN	ASUMS	ASUTR
Total Headcount	18,977	4,716	1,867	4,869	1,852	1,663	33,944	59.7%	14.2%	5.7%	9.7%	5.7%	4.9%
Undergraduate**	10,860	4,716	1,867	4,869	1,852	1,663	25,827	42.0%	18.3%	7.2%	18.9%	7.2%	6.4%
Graduate	8,117	0	0	0	0	0	8,117	100.0%	0.0%	0.0%	0.0%	0.0%	0.0%
Full-Time Equivalent	12,744	2,532	974	1,895	818	717	19,680	64.8%	12.9%	4.9%	9.6%	4.2%	3.6%
Semester Credit Hours	356,799	75,950	29,233	56,846	24,540	21,506	564,874	63.2%	13.4%	5.2%	10.1%	4.3%	3.8%

Student Demographics													
	Campuses							Percentage of System Total					
	A-State	ASUB	ASUMH	ASUN	ASUMS	ASUTR	Total	A-State	ASUB	ASUMH	ASUN	ASUMS	ASUTR
Headcount by Gender													
Male	6,932	1,852	735	1,999	677	647	12,842	54.0%	14.4%	5.7%	15.6%	5.3%	5.0%
Female	12,045	2,864	1,132	2,870	1,175	1,016	21,102	57.1%	13.6%	5.4%	13.6%	5.6%	4.8%
Headcount by Ethnicity													
African American	2,655	339	9	620	1,032	267	4,922	53.9%	6.9%	0.2%	12.6%	21.0%	5.4%
White American	14,068	3,794	1,663	3,639	646	1,216	25,026	56.2%	15.2%	6.6%	14.5%	2.6%	4.9%
Other Ethnicity***	2,254	583	195	610	174	180	3,996	56.4%	14.6%	4.9%	15.3%	4.4%	4.5%

* A-State does not include Campus Querétaro, Mexico.

** Undergraduate included high school students enrolled in college courses.

*** "Other" includes students reported as American Indian/Alaskan Native, Asian American, Hispanic American, Native Hawaiian/Pacific Islander, those reporting two or more races, International and those whose ethnicity is unknown.

Source: NCES IPEDS

System Enrollment Summary



Fall 2019

Student Enrollment

	Campuses							Percentage of System Total					
	A-State	ASUB	ASUMH	ASUN	ASUMS	ASUTR	Total	A-State	ASUB	ASUMH	ASUN	ASUMS	ASUTR
Total Headcount	13,891	3,317	1,325	2,247	1,330	1,151	23,261	59.7%	14.2%	5.7%	9.7%	5.7%	4.9%
Full-Time*	7,599	1,731	583	967	295	358	11,533	65.9%	15.0%	5.1%	8.3%	2.6%	3.1%
Part-Time	6,292	1,586	742	1,280	1,035	793	11,728	53.5%	13.5%	6.3%	11.1%	8.8%	6.7%
High School	716	766	344	477	662	517	3,482	21.6%	23.1%	10.4%	14.5%	20.0%	15.6%
Undergraduate	8,747	2,551	981	1,770	668	634	15,351	57.0%	16.6%	6.4%	11.5%	4.4%	4.1%
Graduate	4,428	0	0	0	0	0	4,428	100.0%	0.0%	0.0%	0.0%	0.0%	0.0%
Full-Time Equivalent	9,840	2,250	833	1,436	670	579	15,608	63.0%	14.4%	5.3%	9.2%	4.3%	3.7%
Semester Credit Hours	141,946	33,746	12,500	21,547	10,044	8,690	228,473	62.1%	14.8%	5.5%	9.4%	4.4%	3.8%

Student Demographics

	Campuses							Percentage of System Total					
	A-State	ASUB	ASUMH	ASUN	ASUMS	ASUTR	Total	A-State	ASUB	ASUMH	ASUN	ASUMS	ASUTR
Headcount by Age													
Under 25	8,697	2,592	861	1,616	1,037	822	15,625	55.7%	16.6%	5.5%	10.3%	6.6%	5.3%
25 & Older	5,193	725	464	631	293	329	7,635	68.0%	9.5%	6.1%	8.3%	3.8%	4.3%
Age Unknown	1	0	0	0	0	0	7	100.0%	0.0%	0.0%	0.0%	0.0%	0.0%
Headcount by Gender													
Male	5,316	1,322	518	842	516	520	9,034	58.8%	14.6%	5.7%	9.3%	5.8%	5.8%
Female	8,575	1,995	807	1,405	814	631	14,227	60.3%	14.0%	5.7%	9.9%	5.7%	4.4%
Headcount by Ethnicity													
African American	1,725	218	5	325	745	175	3,193	54.0%	6.8%	0.2%	10.2%	23.3%	5.5%
White American	9,957	2,716	1,168	1,635	450	832	16,758	59.4%	16.2%	7.0%	9.8%	2.7%	5.0%
Other Ethnicity**	2,209	383	152	287	135	144	3,310	66.7%	11.6%	4.6%	8.7%	4.1%	4.3%

* A "full-time" undergraduate student load is 12 or more semester credits, and a "full-time" graduate student load is 9 or more semester credits.

** "Other" includes students reported as American Indian/Alaskan Native, Asian American, Hispanic American, Native Hawaiian/Pacific Islander, those reporting two or more races, International and those whose ethnicity is unknown.
Source: Office of Strategic Research, ASU System

Total Enrollment

A-State Total* - Fall 2015 to Fall 2019

Total Enrollment										
	Fall Semesters					Percentage of Total Enrollment				
	2015	2016	2017	2018	2019	2015	2016	2017	2018	2019
Total Headcount	13,410	14,085	14,144	14,058	13,891					
High School	461	620	694	692	716	3.4%	4.4%	4.9%	4.9%	5.2%
Undergraduate	9,131	9,219	9,124	9,007	8,747	68.1%	65.5%	64.5%	64.1%	63.0%
Graduate	3,818	4,246	4,326	4,359	4,428	28.5%	30.1%	30.6%	31.0%	31.9%
Full-Time**	8,031	8,061	7,807	7,797	7,599	52.6%	52.2%	55.2%	55.5%	54.7%
Part-Time	5,379	6,024	6,337	6,261	6,292	47.4%	47.8%	44.8%	44.5%	45.3%
Full-Time Equivalent	9,857	10,107	9,996	10,011	9,840	73.5%	71.8%	70.7%	71.2%	70.8%
Student Demographics										
	Fall Semesters					Percentage of Total Enrollment				
	2015	2016	2017	2018	2019	2015	2016	2017	2018	2019
Headcount by Age Categories										
Under 18	480	656	688	729	743	3.6%	4.7%	4.9%	5.2%	5.3%
18 to 19	2,841	2,756	2,835	2,973	2,925	21.2%	19.6%	20.0%	21.1%	21.1%
20 to 21	2,847	3,055	2,925	2,853	2,907	21.2%	21.7%	20.7%	20.3%	20.9%
22 to 24	2,208	2,160	2,236	2,194	2,122	16.5%	15.3%	15.8%	15.6%	15.3%
25 to 29	1,700	1,866	1,808	1,776	1,645	12.7%	13.2%	12.8%	12.6%	11.8%
30 to 44	2,568	2,718	2,747	2,676	2,696	19.1%	19.3%	19.4%	19.0%	19.4%
45 to 64	737	849	876	831	828	5.5%	6.0%	6.2%	5.9%	6.0%
65 & Over	29	25	29	24	24	0.2%	0.2%	0.2%	0.2%	0.2%
Age Unknown	0	0	0	2	1	0.0%	0.0%	0.0%	0.0%	0.0%
Headcount by Gender										
Male	5,446	5,625	5,454	5,371	5,316	40.6%	39.9%	38.6%	38.2%	38.3%
Female	7,964	8,460	8,690	8,687	8,575	59.4%	60.1%	61.4%	61.8%	61.7%
Headcount by Ethnicity***										
African American	1,788	1,836	1,831	1,737	1,725	13.3%	13.0%	12.9%	12.4%	12.4%
White American	9,996	10,448	10,382	10,282	9,957	74.5%	74.2%	73.4%	73.1%	71.7%
Other Ethnicity	1,626	1,801	1,931	2,039	2,209	12.1%	12.8%	13.7%	14.5%	15.9%

* A-State enrollment includes students enrolled at Campus Querétaro, Mexico (Fall 2017 - 214, Fall 2018 - 349, Fall 2019 - 535)

** A "full-time" undergraduate student load is 12 or more semester credits.

*** "Other" includes students reported as American Indian/Alaskan Native, Asian American, Hispanic American, Hawaiian Native/Pacific Islander, those reporting two or more races, International and those whose ethnicity is unknown.

Source: Office of Strategic Research, ASU System

Total Enrollment

A-State (Excludes Campus Querétaro*) - Fall 2015 to Fall 2019

A-State Domestic Enrollment										
	Fall Semesters					Percentage of Total Enrollment				
	2015	2016	2017	2018	2019	2015	2016	2017	2018	2019
Total Headcount	13,410	14,085	13,930	13,709	13,356					
High School	461	620	694	692	716	3.4%	4.4%	5.0%	5.0%	5.4%
Undergraduate	9,131	9,219	8,910	8,658	8,212	68.1%	65.5%	64.0%	63.2%	61.5%
Graduate	3,818	4,246	4,326	4,359	4,428	28.5%	30.1%	31.0%	31.8%	33.1%
Full-Time**	8,031	8,061	7,597	7,456	7,089	52.6%	52.2%	55.2%	55.5%	54.7%
Part-Time	5,379	6,024	6,333	6,253	6,267	47.4%	47.8%	44.8%	44.5%	45.3%
Full-Time Equivalent	9,857	10,107	9,772	9,656	9,313	73.5%	71.8%	70.7%	71.2%	70.8%
Student Demographics										
	Fall Semesters					Percentage of Total Enrollment				
	2015	2016	2017	2018	2019	2015	2016	2017	2018	2019
Headcount by Age Categories										
Under 18	480	656	681	710	722	3.6%	4.7%	4.9%	5.2%	5.4%
18 to 19	2,841	2,756	2,671	2,754	2,625	21.2%	19.6%	19.2%	20.1%	19.7%
20 to 21	2,847	3,055	2,891	2,759	2,734	21.2%	21.7%	20.8%	20.1%	20.5%
22 to 24	2,208	2,160	2,228	2,182	2,086	16.5%	15.3%	16.0%	15.9%	15.6%
25 to 29	1,700	1,866	1,808	1,773	1,641	12.7%	13.2%	13.0%	12.9%	12.3%
30 to 44	2,568	2,718	2,746	2,676	2,696	19.1%	19.3%	19.7%	19.5%	20.2%
45 to 64	737	849	876	831	828	5.5%	6.0%	6.3%	6.1%	6.2%
65 & Over	29	25	29	24	24	0.2%	0.2%	0.2%	0.2%	0.2%
Age Unknown	0	0	0	2	0	0.0%	0.0%	0.0%	0.0%	0.0%
Headcount by Gender										
Male	5,446	5,625	5,337	5,175	5,028	40.6%	39.9%	38.3%	37.7%	37.6%
Female	7,964	8,460	8,593	8,534	8,328	59.4%	60.1%	61.7%	62.3%	62.4%
Headcount by Ethnicity***										
African American	1,788	1,836	1,831	1,737	1,725	13.3%	13.0%	13.1%	12.7%	12.9%
White American	9,996	10,448	10,381	10,281	9,956	74.5%	74.2%	74.5%	75.0%	74.5%
Other Ethnicity	1,626	1,801	1,718	1,691	1,675	12.1%	12.8%	12.3%	12.3%	12.5%

* A-State enrollment does not include Campus Querétaro, Mexico.

** A "full-time" undergraduate student load is 12 or more semester credits.

*** "Other" includes students reported as American Indian/Alaskan Native, Asian American, Hispanic American, Hawaiian Native/Pacific Islander, those reporting two or more races, International and those whose ethnicity is unknown.

Source: Office of Strategic Research, ASU System

Total Enrollment

Arkansas State University Campus Querétaro* - Fall 2017 to Fall 2019

Campus Querétaro Enrollment						
	Fall Semesters			Percentage of Total Enrollment		
	2017	2018	2019	2017	2018	2019
Total Headcount						
Undergraduate	214	349	535	64.0%	63.2%	61.5%
Full-Time**	210	341	510	98.1%	97.7%	95.3%
Part-Time	4	8	25	1.9%	2.3%	4.7%
Full-Time Equivalent	214	349	526	100.0%	100.0%	98.3%

Student Demographics						
	Fall Semesters			Percentage of Total Enrollment		
	2017	2018	2019	2017	2018	2019
Headcount by Age Categories						
Under 18	7	19	21	3.3%	5.4%	3.9%
18 to 19	164	219	300	76.6%	62.8%	56.1%
20 to 21	34	94	173	15.8%	26.9%	32.3%
22 to 24	8	12	36	3.7%	3.4%	6.7%
25 to 29	0	3	4	0.0%	0.9%	0.7%
30 to 44	1	0	0	0.5%	0.0%	0.0%
45 to 64	0	0	0	0.0%	0.0%	0.0%
65 & Over	0	0	0	0.0%	0.0%	0.0%
Age Unknown	0	2	1	0.0%	0.6%	0.2%
Headcount by Gender						
Male	117	196	288	54.7%	56.2%	53.8%
Female	97	153	247	45.3%	43.8%	46.2%
Headcount by Ethnicity***						
African American	0	0	0	0.0%	0.0%	0.0%
White American	1	1	1	0.5%	0.3%	0.2%
Other Ethnicity	213	348	534	99.5%	99.7%	99.8%

* A-State enrollment represents Campus Querétaro, Mexico.

** A "full-time" undergraduate student load is 12 or more semester credits.

*** "Other" includes students reported as American Indian/Alaskan Native, Asian American, Hispanic American, Hawaiian Native/Pacific Islander, those reporting two or more races, International and those whose ethnicity is unknown.

Source: Office of Strategic Research, ASU System

Total Enrollment

ASU-Beebe - Fall 2015 to Fall 2019

Total Enrollment										
	Fall Semesters					Percentage of Total Enrollment				
	2015	2016	2017	2018	2019	2015	2016	2017	2018	2019
Total Headcount	3,935	3,989	3,739	3,446	3,317					
High School	796	884	830	777	766	20.2%	22.2%	22.2%	22.5%	23.1%
Undergraduate	3,139	3,105	2,909	2,669	2,551	79.8%	77.8%	77.8%	77.5%	76.9%
Full-Time*	2,071	2,082	1,867	1,779	1,731	52.6%	52.2%	49.9%	51.6%	52.2%
Part-Time	1,864	1,907	1,872	1,667	1,586	47.4%	47.8%	50.1%	48.4%	47.8%
Full-Time Equivalent	2,680	2,678	2,472	2,338	2,250	68.1%	67.1%	66.1%	67.8%	67.8%
Student Demographics										
	Fall Semesters					Percentage of Total Enrollment				
	2015	2016	2017	2018	2019	2015	2016	2017	2018	2019
Headcount by Age Categories										
Under 18	861	937	761	849	728	21.9%	23.5%	20.4%	24.6%	21.9%
18 to 19	1,264	1,210	1,241	1,109	1,146	32.1%	30.3%	33.2%	32.2%	34.5%
20 to 21	526	533	530	442	424	13.4%	13.2%	14.2%	12.8%	12.8%
22 to 24	365	362	342	297	294	9.3%	9.1%	9.1%	8.6%	8.9%
25 to 29	336	352	329	292	280	8.5%	8.8%	8.8%	8.5%	8.4%
30 to 44	397	413	373	324	320	10.1%	10.4%	10.0%	9.4%	9.6%
45 to 64	161	152	132	111	109	4.1%	3.8%	3.5%	3.2%	3.3%
65 & Over	25	30	31	22	16	0.6%	0.8%	0.8%	0.6%	0.5%
Age Unknown	0	0	0	0	0	0.0%	0.0%	0.0%	0.0%	0.0%
Headcount by Gender										
Male	1,771	1,721	1,522	1,377	1,322	45.0%	43.1%	40.7%	40.0%	39.9%
Female	2,164	2,268	2,217	2,069	1,995	55.0%	56.9%	59.3%	60.0%	60.1%
Headcount by Ethnicity**										
African American	242	243	230	237	218	6.1%	6.1%	6.2%	6.9%	6.6%
White American	3,260	3,280	2,978	2,784	2,716	82.8%	82.2%	79.6%	80.8%	81.9%
Other Ethnicity	433	466	531	425	383	11.0%	11.7%	14.2%	12.3%	11.5%

* A "full-time" undergraduate student load is 12 or more semester credits.

** "Other" includes students reported as American Indian/Alaskan Native, Asian American, Hispanic American, Hawaiian Native/Pacific Islander, those reporting two or more races, International and those whose ethnicity is unknown.
Source: Office of Strategic Research, ASU System

Total Enrollment

ASU-Mountain Home - Fall 2015 to Fall 2019

Total Enrollment										
	Fall Semesters					Percentage of Total Enrollment				
	2015	2016	2017	2018	2019	2015	2016	2017	2018	2019
Total Headcount	1,384	1,367	1,441	1,345	1,325					
High School	160	163	387	295	344	11.6%	11.9%	26.9%	21.9%	26.0%
Undergraduate	1,224	1,204	1,042	1,050	981	88.4%	88.1%	72.3%	78.1%	74.0%
Full-Time*	740	714	644	605	583	53.5%	52.2%	44.7%	45.0%	44.0%
Part-Time	644	653	797	740	742	46.5%	47.8%	55.3%	55.0%	56.0%
Full-Time Equivalent	960	953	905	854	833	69.4%	69.7%	62.8%	63.5%	62.9%
Student Demographics										
	Fall Semesters					Percentage of Total Enrollment				
	2015	2016	2017	2018	2019	2015	2016	2017	2018	2019
Headcount by Age Categories										
Under 18	199	174	379	323	186	8.8%	14.4%	12.7%	26.3%	14.0%
18 to 19	330	342	333	331	351	24.8%	23.8%	25.0%	23.1%	26.5%
20 to 21	138	131	137	125	204	10.1%	10.0%	9.6%	9.5%	15.4%
22 to 24	1115	133	117	119	120	10.4%	8.3%	9.7%	8.1%	9.1%
25 to 29	174	175	166	151	137	13.7%	12.6%	12.8%	11.5%	10.3%
30 to 44	280	263	202	212	236	21.2%	20.2%	19.2%	14.0%	17.8%
45 to 64	136	138	101	78	81	10.1%	9.8%	10.1%	7.0%	6.1%
65 & Over	12	11	6	6	10	0.9%	0.9%	0.8%	0.4%	0.8%
Age Unknown	0	0	0	0	0	0.0%	0.0%	0.0%	0.0%	0.0%
Headcount by Gender										
Male	517	577	603	542	518	37.4%	42.2%	41.8%	40.3%	39.1%
Female	867	790	838	803	807	62.6%	57.8%	58.2%	59.7%	60.9%
Headcount by Ethnicity**										
African American	8	10	8	8	5	0.6%	0.7%	0.6%	0.6%	0.4%
White American	1,239	1,245	1,135	1,137	1,168	89.5%	91.1%	78.8%	84.5%	88.2%
Other Ethnicity	137	112	298	200	152	9.9%	8.2%	20.7%	14.9%	11.5%

* A "full-time" undergraduate student load is 12 or more semester credits.

** "Other" includes students reported as American Indian/Alaskan Native, Asian American, Hispanic American, Hawaiian Native/Pacific Islander, those reporting two or more races, International and those whose ethnicity is unknown.

Source: Office of Strategic Research, ASU System

Total Enrollment



ASU-Newport - Fall 2015 to Fall 2019*

Total Enrollment										
	Fall Semesters					Percentage of Total Enrollment				
	2015	2016	2017	2018	2019	2015	2016	2017	2018	2019
Total Headcount	2,651	2,735	2,386	2,270	2,247					
High School	821	822	559	473	477	31.0%	30.1%	23.4%	20.8%	21.2%
Undergraduate	1,830	1,913	1,827	1,797	1,770	69.0%	69.9%	76.6%	79.2%	78.8%
Full-Time**	1,032	1,058	1,095	1,039	967	38.9%	39.2%	45.9%	45.8%	42.4%
Part-Time	1,619	1,657	1,291	1,231	1,280	61.1%	60.8%	54.1%	54.2%	57.6%
Full-Time Equivalent	1,482	1,568	1,538	1,466	1,436	55.9%	57.3%	64.4%	64.6%	63.3%
Student Demographics										
	Fall Semesters					Percentage of Total Enrollment				
	2015	2016	2017	2018	2019	2015	2016	2017	2018	2019
Headcount by Age Categories										
Under 18	733	743	518	457	492	27.6%	27.2%	24.4%	20.1%	21.9%
18 to 19	614	588	562	530	487	23.2%	21.5%	23.6%	23.3%	21.7%
20 to 21	335	422	365	360	349	12.6%	15.4%	15.3%	15.9%	15.5%
22 to 24	278	285	238	300	288	10.5%	10.4%	10.0%	13.2%	12.8%
25 to 29	235	261	231	217	226	8.9%	9.5%	9.7%	9.6%	10.1%
30 to 44	350	340	300	315	311	13.2%	12.4%	21.6%	13.9%	13.8%
45 to 64	98	92	102	83	89	3.7%	3.4%	4.3%	3.7%	4.0%
65 & Over	8	4	2	1	5	0.3%	0.1%	0.1%	0.0%	0.2%
Age Unknown	0	0	5	7	0	0.0%	0.0%	0.2%	0.3%	0.0%
Headcount by Gender										
Male	1,097	1,097	960	902	842	41.4%	40.1%	40.2%	37.5%	37.9%
Female	1,554	1,638	1,426	1,368	1,405	58.6%	59.9%	59.8%	62.5%	62.1%
Headcount by Ethnicity***										
African American	451	419	355	323	325	17.0%	15.3%	14.9%	14.2%	14.5%
White American	1,872	1,977	1,792	1,727	1,635	70.6%	72.3%	75.1%	76.1%	72.8%
Other Ethnicity	328	339	239	220	287	12.4%	12.4%	10.0%	9.7%	12.8%

* Fall 2019 revised from 2,259 to 2,247.

** A "full-time" undergraduate student load is 12 or more semester credits.

*** "Other" includes students reported as American Indian/Alaskan Native, Asian American, Hispanic American, Hawaiian Native/Pacific Islander, those reporting two or more races, International and those whose ethnicity is unknown.

Source: Office of Strategic Research, ASU System

Total Enrollment



ASU Mid-South - Fall 2015 to Fall 2019

Total Enrollment										
	Fall Semesters					Percentage of Total Enrollment				
	2015	2016	2017	2018	2019	2015	2016	2017	2018	2019
Total Headcount	1,896	1,836	1,561	1,423	1,330					
High School	779	780	627	657	662	41.1%	42.5%	40.2%	46.2%	49.8%
Undergraduate	1,117	1,056	934	766	668	58.9%	57.5%	59.8%	53.8%	50.2%
Full-Time*	570	530	437	356	295	30.1%	28.9%	28.0%	25.0%	22.2%
Part-Time	1,326	1,306	1,124	1,067	1,035	69.9%	71.1%	72.0%	75.0%	77.8%
Full-Time Equivalent	1,033	993	841	739	670	54.5%	54.1%	53.9%	51.9%	50.3%
Student Demographics										
	Fall Semesters					Percentage of Total Enrollment				
	2015	2016	2017	2018	2019	2015	2016	2017	2018	2019
Headcount by Age Categories										
Under 18	789	774	622	649	524	41.6%	42.2%	39.8%	45.6%	39.4%
18 to 19	325	328	288	250	313	17.1%	17.9%	18.4%	17.6%	23.5%
20 to 21	167	164	166	113	109	8.8%	8.9%	10.6%	7.9%	8.2%
22 to 24	139	114	122	95	91	7.3%	6.2%	7.8%	6.7%	6.8%
25 to 29	157	161	113	97	91	8.3%	8.8%	7.2%	6.8%	6.8%
30 to 44	244	226	189	155	146	12.9%	12.3%	12.1%	10.9%	11.0%
45 to 64	69	61	53	59	52	3.6%	3.3%	3.4%	4.1%	3.9%
65 & Over	6	8	8	5	4	0.3%	0.4%	0.5%	0.4%	0.3%
Age Unknown	0	0	0	0	0	0.0%	0.0%	0.0%	0.0%	0.0%
Headcount by Gender										
Male	747	763	627	528	516	39.4%	41.6%	40.2%	37.1%	38.8%
Female	1,149	1,073	934	895	814	60.6%	58.4%	59.8%	62.9%	61.2%
Headcount by Ethnicity**										
African American	1,072	1,040	888	790	745	56.5%	56.6%	56.9%	55.5%	56.0%
White American	671	623	506	503	450	35.4%	33.9%	32.4%	35.3%	33.8%
Other Ethnicity	153	173	167	130	135	8.1%	9.4%	10.7%	9.1%	10.2%

* A "full-time" undergraduate student load is 12 or more semester credits.

** "Other" includes students reported as American Indian/Alaskan Native, Asian American, Hispanic American, Hawaiian Native/Pacific Islander, those reporting two or more races, International and those whose ethnicity is unknown.

Source: Office of Strategic Research, ASU System

Total Enrollment



ASU Three Rivers - Fall 2015 to Fall 2019

Total Enrollment										
	Fall Semesters					Percentage of Total Enrollment				
	2015	2016	2017	2018	2019	2015	2016	2017	2018	2019
Total Headcount	1,346	1,328	1,272	1,257	1,151					
High School	529	542	553	591	517	39.3%	40.8%	43.5%	47.0%	44.9%
Undergraduate	817	786	719	666	634	60.7%	59.2%	56.5%	53.0%	55.1%
Full-Time*	501	439	384	338	358	37.2%	33.1%	30.2%	26.9%	31.1%
Part-Time	845	889	888	919	793	62.8%	66.9%	69.8%	73.1%	68.9%
Full-Time Equivalent	729	715	659	613	579	54.2%	53.8%	51.8%	48.8%	50.3%
Student Demographics										
	Fall Semesters					Percentage of Total Enrollment				
	2015	2016	2017	2018	2019	2015	2016	2017	2018	2019
Headcount by Age Categories										
Under 18	514	533	537	579	366	38.2%	40.1%	42.2%	46.1%	31.8%
18 to 19	212	216	226	165	259	10.8%	9.4%	8.2%	8.8%	11.9%
20 to 21	123	105	86	96	106	9.1%	7.9%	6.8%	7.6%	9.2%
22 to 24	130	95	67	93	91	9.7%	7.2%	5.3%	7.4%	7.9%
25 to 29	126	148	129	135	97	9.4%	11.1%	10.1%	10.7%	8.4%
30 to 44	189	191	173	154	187	14.0%	14.4%	13.6%	12.3%	16.2%
45 to 64	52	39	45	35	45	3.9%	2.9%	3.5%	2.8%	3.9%
65 & Over	0	1	1	0	0	0.0%	0.1%	0.1%	0.0%	0.0%
Age Unknown	0	0	8	0	0	0.0%	0.0%	0.6%	0.0%	0.0%
Headcount by Gender										
Male	548	570	559	552	520	40.7%	42.9%	43.9%	43.9%	45.2%
Female	798	758	713	705	631	59.3%	57.1%	56.1%	56.1%	54.8%
Headcount by Ethnicity**										
African American	151	180	177	159	175	11.2%	13.6%	13.9%	12.6%	15.2%
White American	1,070	1,020	960	957	832	79.5%	76.8%	75.5%	76.1%	72.3%
Other Ethnicity	125	128	135	141	144	9.3%	9.6%	10.6%	11.2%	12.5%

* A "full-time" undergraduate student load is 12 or more semester credits.

** "Other" includes students reported as American Indian/Alaskan Native, Asian American, Hispanic American, Hawaiian Native/Pacific Islander, those reporting two or more races, International and those whose ethnicity is unknown.

Source: Office of Strategic Research, ASU System, NCES IPEDS

Geographic Origin of Total Enrollment By Arkansas County



ASU System - Fall 2019

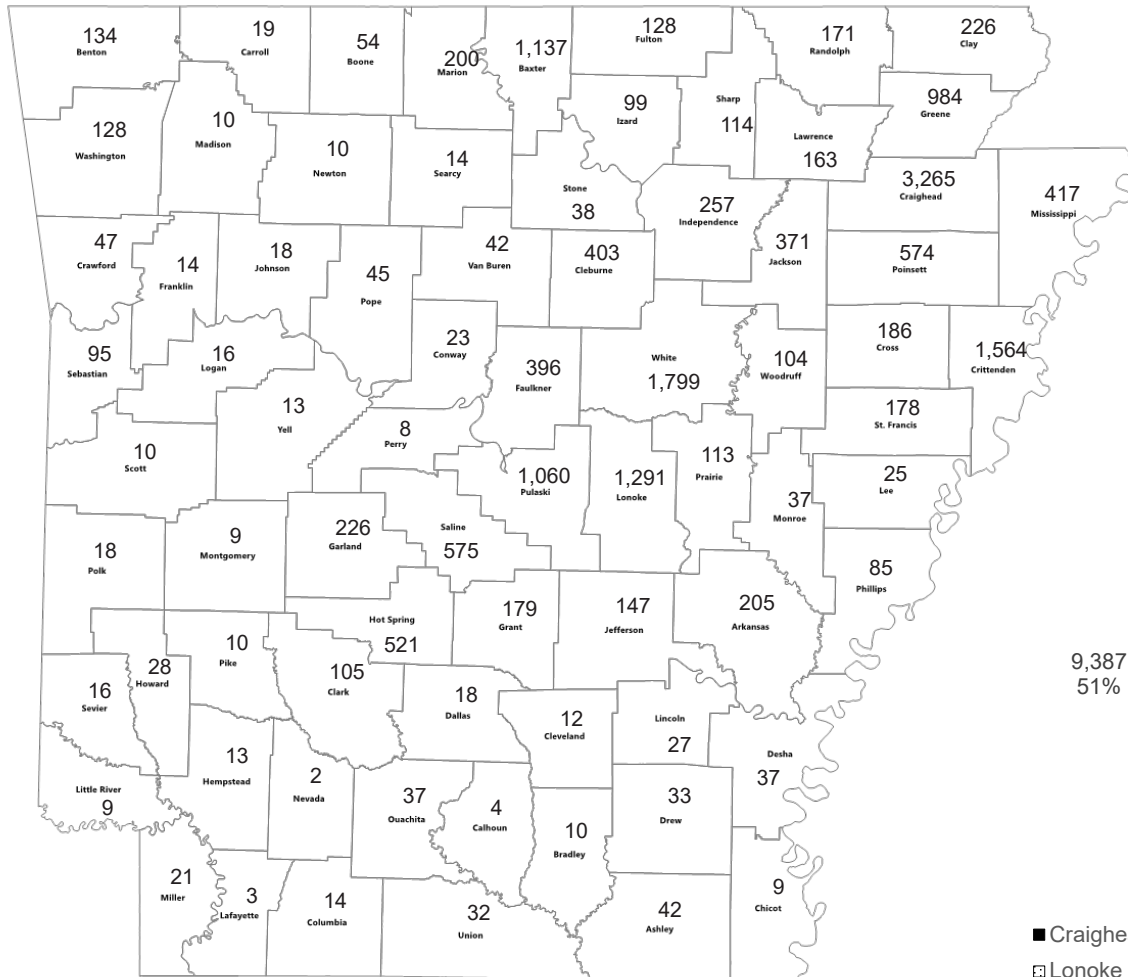
County	A-State	ASUB	ASUMH	ASUN	ASUMS	ASUTR	Total
Arkansas	89	3	3	108	2	0	205
Ashley	38	0	0	3	1	0	42
Baxter	190	0	944	2	0	1	1,137
Benton	117	0	6	10	1	0	134
Boone	40	1	12	1	0	0	54
Bradley	10	0	0	0	0	0	10
Calhoun	4	0	0	0	0	0	4
Carroll	18	0	0	1	0	0	19
Chicot	7	2	0	0	0	0	9
Clark	16	0	0	1	0	88	105
Clay	212	3	0	11	0	0	226
Cleburne	72	328	2	1	0	0	403
Cleveland	11	0	0	0	0	1	12
Columbia	11	1	1	0	0	1	14
Conway	21	1	1	0	0	0	23
Craighead	2,225	6	5	1,022	6	1	3,265
Crawford	42	1	2	2	0	0	47
Crittenden	395	2	0	24	1,143	0	1,564
Cross	161	1	2	14	8	0	186
Dallas	7	0	0	0	0	11	18
Desha	32	2	1	2	0	0	37
Drew	29	2	0	2	0	0	33
Faulkner	180	195	2	9	2	8	396
Franklin	12	0	2	0	0	0	14
Fulton	65	4	56	3	0	0	128
Garland	125	2	0	1	0	98	226
Grant	46	2	0	1	0	130	179
Greene	901	2	2	79	0	0	984
Hempstead	10	2	0	1	0	0	13
Hot Spring	38	0	0	0	0	483	521
Howard	12	16	0	0	0	0	28
Independence	209	3	2	43	0	0	257
Izard	62	6	30	1	0	0	99
Jackson	108	9	0	254	0	0	371
Jefferson	129	1	1	3	0	13	147
Johnson	15	1	0	2	0	0	18
Lafayette	1	0	0	0	0	2	3
Lawrence	144	0	0	19	0	0	163

County	A-State	ASUB	ASUMH	ASUN	ASUMS	ASUTR	Total
Lee	19	1	0	2	3	0	25
Lincoln	27	0	0	0	0	0	27
Little River	9	0	0	0	0	0	9
Logan	15	0	0	0	0	1	16
Lonoke	369	908	1	10	0	3	1,291
Madison	10	0	0	0	0	0	10
Marion	42	0	157	1	0	0	200
Miller	19	1	0	1	0	0	21
Mississippi	355	6	0	49	7	0	417
Monroe	26	6	0	5	0	0	37
Montgomery	5	0	0	0	0	4	9
Nevada	2	0	0	0	0	0	2
Newton	6	0	4	0	0	0	10
Ouachita	28	0	0	2	0	7	37
Perry	5	2	0	0	0	1	8
Phillips	84	0	0	1	0	0	85
Pike	4	1	0	0	0	5	10
Poinsett	280	2	0	289	3	0	574
Polk	17	1	0	0	0	0	18
Pope	43	1	1	0	0	0	45
Prairie	55	55	0	3	0	0	113
Pulaski	695	274	4	19	6	62	1,060
Randolph	151	3	2	15	0	0	171
Saline	342	11	2	4	1	215	575
Scott	6	1	0	3	0	0	10
Searcy	6	2	4	2	0	0	14
Sebastian	88	2	1	3	1	0	95
Sevier	15	0	0	0	0	1	16
Sharp	106	1	2	4	1	0	114
St. Francis	139	2	1	5	31	0	178
Stone	29	3	4	2	0	0	38
Union	29	2	0	1	0	0	32
Van Buren	20	19	1	2	0	0	42
Washington	103	1	1	22	1	0	128
White	404	1,340	1	50	2	2	1,799
Woodruff	38	27	0	39	0	0	104
Yell	13		0	0	0	0	13
Total	9,408	3,268	1,260	2,154	1,219	1,138	18,447

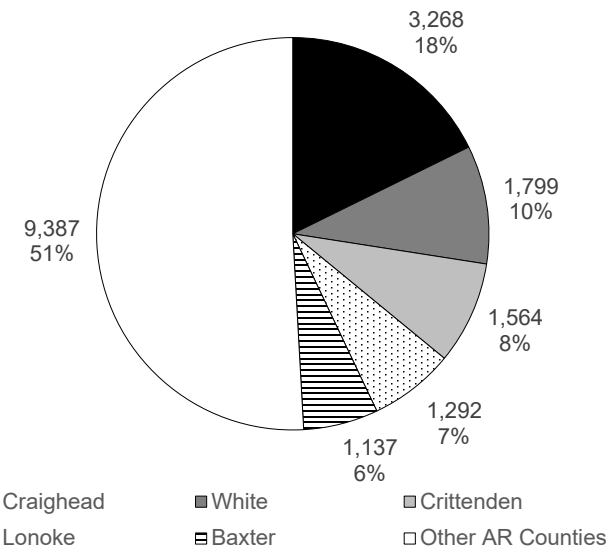
NOTE: ASU-Newport enrolled 1 student with a geographic origin of Arkansas with an unknown county.
Source: Office of Strategic Research, ASU System

Geographic Origin of Total Enrollment By Arkansas County

ASU System - Fall 2019



TOP 5 ARKANSAS COUNTIES



Source: Office of Strategic Research, ASU System

Geographic Origin of Total Enrollment By State, Territory & Foreign Country



ASU System - Fall 2019

Geography	A-State	ASUB	ASUMH	ASUN	ASUMS	ASUTR	Total
Alabama	52	2	1	0	0	0	55
Alaska	6	0	1	0	0	0	7
Arizona	17	2	0	0	0	0	19
Arkansas	9,408	3,268	1,260	2,154	1,219	1,138	18,447
California	98	3	0	1	0	0	102
Colorado	32	0	0	0	0	0	32
Connecticut	16	0	0	0	0	0	16
Delaware	2	0	0	0	0	0	2
District of Columbia	2	0	0	0	0	0	2
Florida	86	1	0	0	0	0	87
Georgia	99	0	0	1	0	0	100
Hawaii	1	0	0	0	0	0	1
Idaho	7	0	0	0	0	0	7
Illinois	87	0	1	4	0	0	92
Indiana	17	0	0	1	1	0	19
Iowa	7	1	0	0	0	0	8
Kansas	34	0	2	1	0	0	37
Kentucky	14	0	0	1	0	0	15
Louisiana	78	5	1	1	0	0	85
Maine	0	0	0	0	0	0	0
Maryland	23	0	0	0	0	0	23
Massachusetts	11	0	0	0	0	0	11
Michigan	63	0	0	0	0	0	63
Minnesota	10	0	0	0	0	0	10
Mississippi	508	0	0	3	13	2	526
Missouri	800	6	50	17	0	0	873
Montana	4	2	0	0	0	0	6
Nebraska	4	0	0	0	0	0	4

Geography	A-State	ASUB	ASUMH	ASUN	ASUMS	ASUTR	Total
Nevada	10	0	0	0	0	0	10
New Hampshire	3	0	0	0	0	0	3
New Jersey	49	0	0	0	0	0	49
New Mexico	11	0	0	0	0	0	11
New York	26	0	0	0	0	0	26
North Carolina	24	0	1	2	0	0	27
North Dakota	1	0	0	0	0	0	1
Ohio	52	0	0	1	0	0	53
Oklahoma	67	1	1	6	0	0	75
Oregon	8	0	0	0	0	0	8
Pennsylvania	39	0	0	0	0	0	39
Rhode Island	2	0	0	1	0	0	3
South Carolina	91	1	0	1	0	0	93
South Dakota	4	0	0	0	0	0	4
Tennessee	625	4	1	10	87	0	727
Texas	170	3	1	12	3	0	189
Utah	16	0	0	0	0	0	16
Vermont	3	0	0	0	0	0	3
Virginia	49	1	0	1	0	0	51
Washington	18	0	0	1	0	0	19
West Virginia	5	0	0	0	0	0	5
Wisconsin	17	0	0	0	0	0	17
Wyoming	8	0	0	0	0	0	8
States Total	12,784	3,300	1,320	2,219	1,323	1,140	22,086
Puerto Rico	2	0	0	0	0	0	2
U.S. Virgin Islands	1	0	0	0	0	0	1
Overseas Military	2	2	0	0	0	0	4
Foreign Countries	1,102*	15	5	28	7	11	1,168
Total	13,891	3,317	1,325	2,247	1,330	1,151	23,261

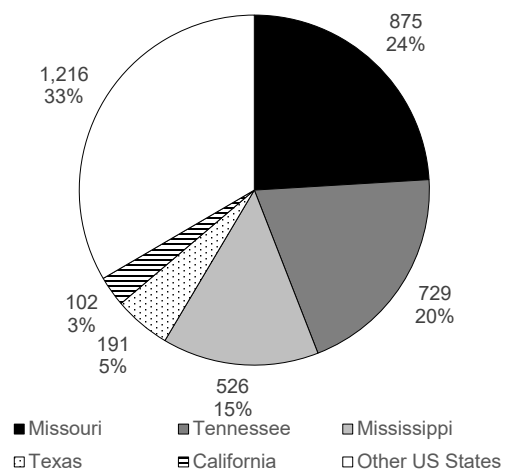
* A-State includes 535 students enrolled at Campus Queretaro in Mexico.
Source: Office of Strategic Research, ASU System

Geographic Origin of Total Enrollment By State

ASU System - Fall 2019



TOP 5 STATES OUTSIDE OF ARKANSAS



Source: Office of Strategic Research, ASU System

First-Time in College Students



ASU System - Fall 2019

Total First-Time in College Student Enrollment														
	Campus							Percentage of FTIC Enrollment						
	A-State	ASUB	ASUMH	ASUN	ASUMS	ASUTR	Total	A-State	ASUB	ASUMH	ASUN	ASUMS	ASUTR	
Total First-Time in College	1,627	761	225	239	144	121	3,117							
Full-Time*	1,579	682	150	199	87	73	2,770	97.0%	89.6%	66.7%	83.3%	60.4%	60.3%	
Part-Time	48	79	75	40	57	48	347	3.0%	10.4%	33.3%	16.7%	39.6%	39.7%	
Full-Time Equivalent	1,623	678	178	213	109	89	2,891	99.7%	89.1%	78.9%	90.7%	75.4%	73.6%	
Avg. Hours Enrolled per Semester	15.0	13.4	11.8	13.4	11.3	11.0	13.9							
Full-Time	15.2	14.1	13.8	14.4	13.7	14.2	14.8							
Part-Time	7.3	6.7	7.9	8.3	7.6	6.3	7.3							

First-Time in College Student Demographics														
	Campus							Percentage of FTIC Enrollment						
	A-State	ASUB	ASUMH	ASUN	ASUMS	ASUTR	Total	A-State	ASUB	ASUMH	ASUN	ASUMS	ASUTR	
Male	699	318	103	122	62	56	1,357	43.0%	41.8%	45.8%	50.2%	43.1%	46.3%	
Female	928	443	122	117	82	65	1,758	57.0%	58.2%	54.2%	49.8%	56.9%	53.7%	
Headcount by Ethnicity														
African American	165	54	1	35	77	17	349	10.1%	7.1%	0.4%	14.6%	53.5%	14.0%	
American Indian/Alaskan Native	5	7	0	2	4	2	21	0.3%	0.9%	0.0%	0.8%	2.8%	1.7%	
Asian American	9	5	0	1	2	0	17	0.6%	0.7%	0.0%	0.4%	1.4%	0.0%	
Hispanic American	57	39	10	11	4	7	128	3.5%	5.1%	4.4%	4.6%	2.8%	5.8%	
Native Hawaiian/Pacific Islander	1	0	0	0	0	0	1	0.1%	0.0%	0.0%	0.0%	0.0%	0.0%	
Two or More Races	40	16	13	3	0	5	76	2.5%	2.1%	5.8%	1.3%	0.0%	4.1%	
White American	1,077	626	201	177	53	88	2,221	66.2%	82.3%	89.3%	74.1%	36.8%	72.7%	
Ethnicity Unknown	7	14	0	9	2	2	34	0.4%	1.8%	0.0%	3.8%	1.4%	1.7%	
International	266	0	0	1	2	0	268	16.3%	0.0%	0.0%	0.0%	1.4%	0.0%	

*NOTE: A "full-time" undergraduate student load is 12 or more semester credits.
Source: Office of Strategic Research, ASU System

First-Time Transfer Students



ASU System - Fall 2019

Total First-Time Transfer Student Enrollment														
	Campus							Percentage of FTT Enrollment						
	A-State	ASUB	ASUMH	ASUN	ASUMS	ASUTR	Total	A-State	ASUB	ASUMH	ASUN	ASUMS	ASUTR	
Total First-Time Transfers	795	207	84	103	63	115	1,296							
Full-Time*	523	121	47	68	22	67	795	65.8%	58.5%	56.0%	66.0%	34.9%	58.3%	
Part-Time	272	86	37	35	41	48	501	34.2%	41.5%	44.0%	34.0%	65.1%	41.7%	
Full-Time Equivalent	630	148	59	78	36	76	971	79.3%	71.4%	70.0%	68.8%	57.2%	66.5%	
Avg. Hours Enrolled per Semester	11.9	10.7	10.5	11.3	8.6	10.0	11.2							
Full-Time	14.7	14.1	13.4	13.7	13.1	13.0	14.3							
Part-Time	6.6	6.0	6.8	6.6	6.2	5.7	6.4							

First-Time Transfer Student Demographics														
	Campus							Percentage of FTT Enrollment						
	A-State	ASUB	ASUMH	ASUN	ASUMS	ASUTR	Total	A-State	ASUB	ASUMH	ASUN	ASUMS	ASUTR	
Male	319	83	26	31	28	36	500	40.1%	40.1%	31.0%	30.1%	44.4%	31.3%	
Female	476	124	58	72	35	79	796	59.9%	59.9%	69.0%	69.9%	55.6%	68.7%	
Headcount by Ethnicity														
African American	130	29	1	19	35	33	247	16.4%	14.0%	1.2%	18.4%	55.6%	28.7%	
American Indian/Alaskan Native	6	1	0	2	1	1	11	0.8%	0.5%	0.0%	1.9%	1.6%	0.9%	
Asian American	5	4	0	0	2	0	11	0.6%	1.9%	0.0%	0.0%	3.2%	0.0%	
Hispanic American	30	6	1	4	0	7	48	3.8%	2.9%	1.2%	3.9%	0.0%	6.1%	
Native Hawaiian/Pacific Islander	1	1	0	0	0	0	2	0.1%	0.5%	0.0%	0.0%	0.0%	0.0%	
Two or More Races	19	6	6	1	0	7	39	2.4%	2.9%	7.1%	1.0%	0.0%	6.1%	
White American	556	153	76	71	25	66	947	69.9%	73.9%	90.5%	68.9%	39.7%	57.4%	
Unknown Ethnicity	16	7	0	6	0	1	30	2.0%	3.4%	0.0%	5.8%	0.0%	0.9%	
International	32	0	0	0	0	0	32	4.0%	0.0%	0.0%	0.0%	0.0%	0.0%	

*NOTE: A "full-time" undergraduate student load is 12 or more semester credits.
Source: Office of Strategic Research, ASU System



Academic Progress

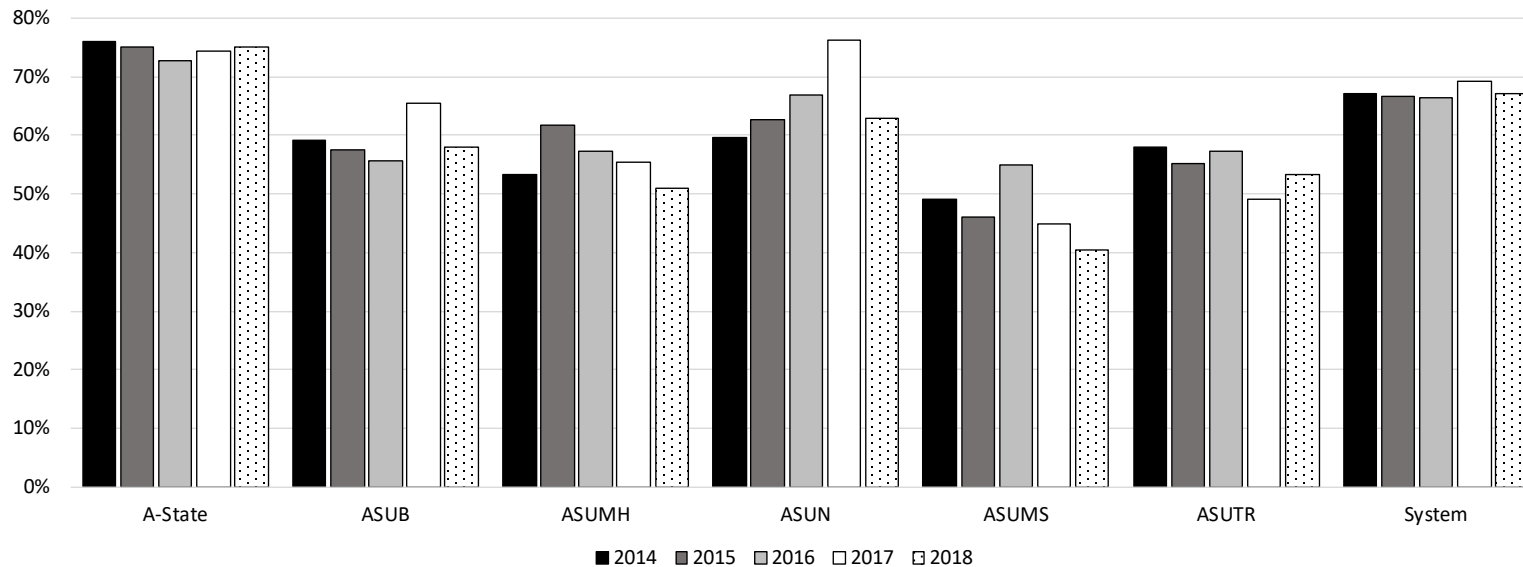
Academic Progress - Retention Rates



ASU System - Fall 2014 - Fall 2018

Full-Time, First-Time in College Student 1 Year Retention Rate

								1 Year Retention Rate					
	A-State	ASUB	ASUMH	ASUN	ASUMS	ASUTR	Total	A-State	ASUB	ASUMH	ASUN	ASUMS	ASUTR
Fall 2018 Adjusted Cohort	1,701	661	151	296	116	75	3,000	75.1%	57.9%	51.0%	62.8%	40.5%	53.3%
Fall 2017 Adjusted Cohort	1,595	729	184	331	118	110	3,067	74.4%	65.6%	55.4%	76.1%	44.9%	49.1%
Fall 2016 Adjusted Cohort	1,609	565	192	306	142	124	2,938	72.8%	55.8%	57.3%	67.0%	54.9%	57.3%
Fall 2015 Adjusted Cohort	1,540	571	178	302	198	118	2,907	75.0%	57.4%	61.8%	62.6%	46.0%	55.1%
Fall 2014 Adjusted Cohort	1,680	604	199	359	187	145	3,174	76.0%	59.3%	53.3%	59.6%	49.2%	57.9%



* A-State includes Campus Querétaro, Mexico.
Source: Office of Strategic Research, ASU System; NCES IPEDS

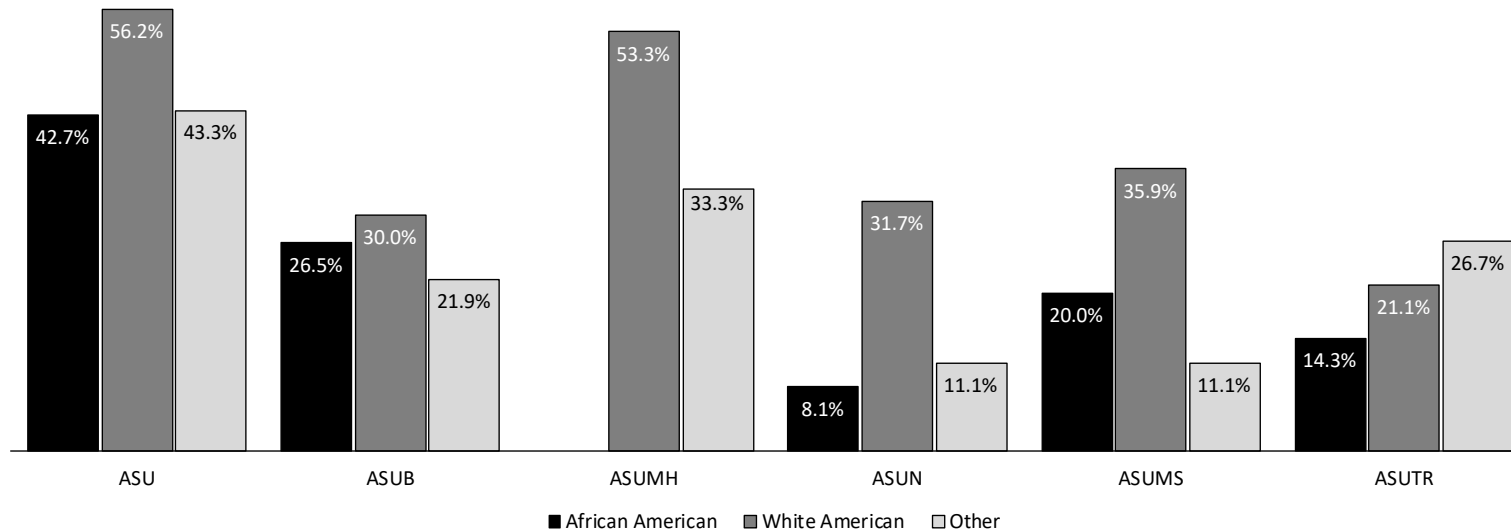
Academic Progress - 150% Graduation Rates*



ASU System

Fall Semester	Campus	Adjusted Cohort	Total Completers Within 150% of Time	150% Graduation Rate	Graduating with Bachelor's Within 150% of Time		
					4 Years	5 Years	6 Years
2013	A-State	1,575	835	53.0%	35.2%	47.4%	50.5%
2016	ASUB	565	163	28.8%			
	ASUMH	192	100	52.1%			
	ASUN	303	80	26.4%			
	ASUMS	143	34	23.8%			
	ASUTR	124	33	26.6%			

150% GRADUATION RATES FOR FULL-TIME, FIRST-TIME IN COLLEGE STUDENTS BY ETHNICITY**



* Graduates Rates are cumulative and based on IPEDS Methodology. Graduation Rates within 150% of time represents students earning a certificate within 150% of normal time to completion, an associate degree within 3 years and students earning a bachelor's degree within 4-5-or 6 years. Adjusted Cohort reflects the original fall cohort after allowable exclusions: Students who died or became permanently disabled; students who left school to serve in the armed forces; students who left school to serve with a foreign aid service of the Federal Government; and students who left school to serve on an official church mission.

** "Other" includes students reported as American Indian/Alaskan Native, Asian American, Hispanic American, Native Hawaiian/Pacific Islander, those reporting two or more races, International and those whose ethnicity is unknown. Source: Office of Strategic Research, ASU System; NCES IPEDS



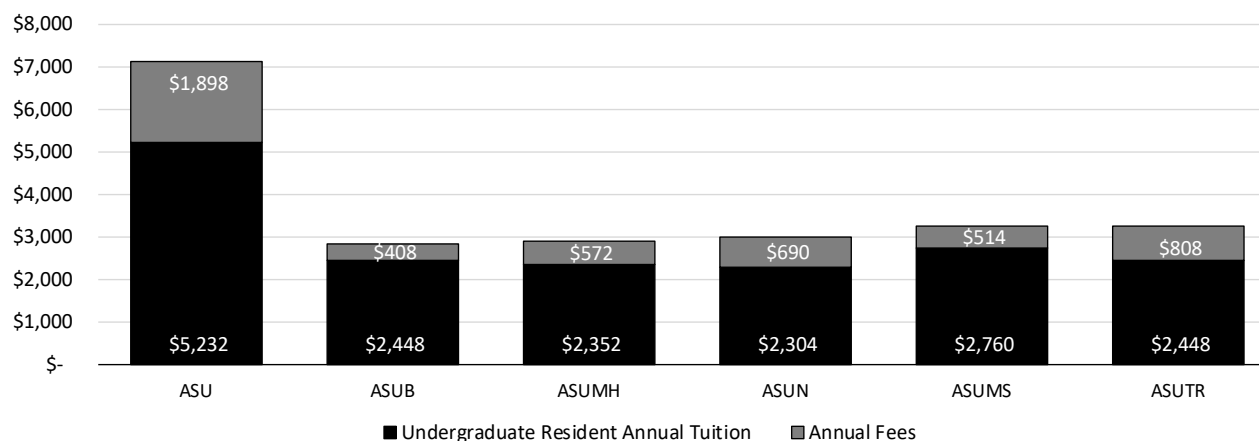
Tuition & Fees

Tuition & Required Fees

ASU System - 2019-2020

Campus	Undergraduate				
	Annual Tuition (Based on 12 Hour Load per Semester)		Per Credit Hour Tuition		Annual Fees (Based on 12 Hour Load per Semester)
	Resident	Nonresident	Resident	Nonresident	
A-State	\$5,232	\$10,800	\$218	\$450	\$1,898
ASU-Beebe	2,448	4,176	102	174	408
ASU-Mountain Home	2,352	3,960	98	165	572
ASU-Newport	2,304	3,768	96	157	690
ASU Mid-South	2,760	3,720	115	155	514
ASU Three Rivers	2,448	4,872	102	203	808
2-Year Campus Average	2,462	4,099	103	171	598

Campus	Graduate				
	Annual Tuition (Based on 9 Hour Load per Semester)		Per Credit Hour Tuition		Annual Fees (Based on 9 Hour Load per Semester)
	Resident	Nonresident	Resident	Nonresident	
A-State	\$4,986	\$9,972	\$277	\$554	\$1,436



Source: Office of Strategic Research, ASU System



Student Financial Aid

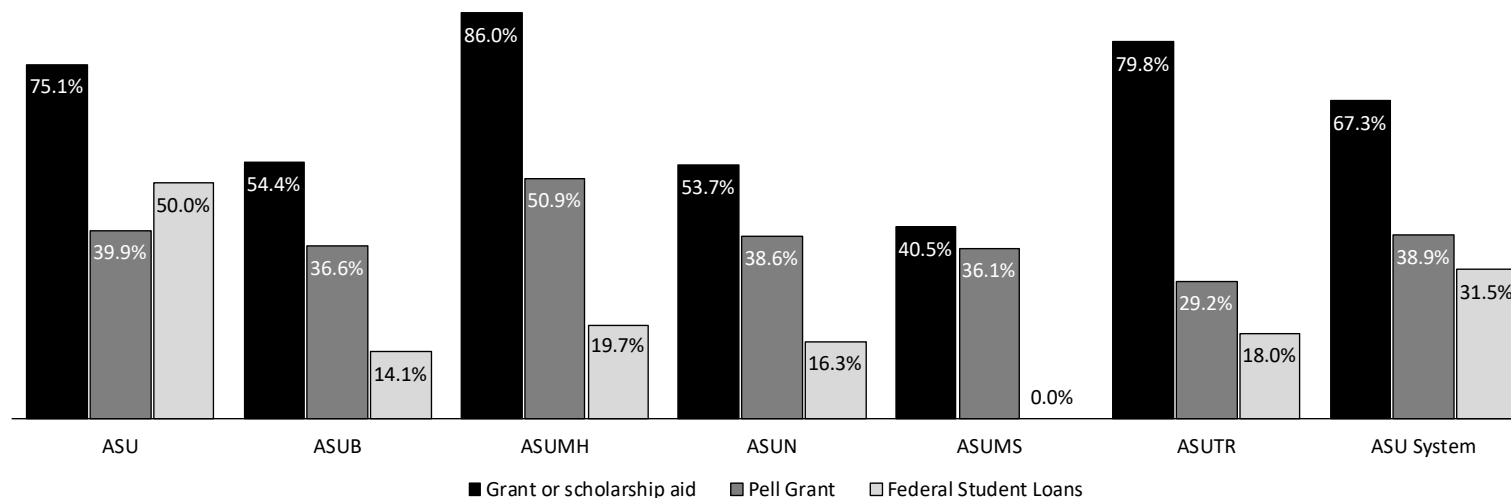
Student Financial Aid - Undergraduate Students



ASU System - AY 2018-2019

Campus	Undergraduate Students*	Percent Awarded Grant or Scholarship Aid	Percent Awarded Pell Grants	Percent Disbursed Federal Student Loans
A-State	9,350	75.1%	39.9%	50.0%
ASUB	3,447	54.4%	36.6%	14.1%
ASUMH	1,345	86.0%	50.9%	19.7%
ASUN	2,270	53.7%	38.6%	16.3%
ASUMS	1,423	40.5%	36.1%	0.0%
ASUTR	1,259	79.8%	29.2%	18.0%
ASU System	19,094	67.3%	38.9%	31.5%

PERCENT OF UNDERGRADUATE STUDENTS BY TYPE OF AID



* Undergraduate Students do not include students enrolled at Campus Queretaro.
Source: NCES IPEDS



Employees

System Employee Summary



ASU System

Full-Time Employees by Category

	A-State*	ASUB	ASUMH	Campuses		ASUTR	System Office	Total
				ASUN	ASUMS			
Full-Time Employees	1,591	285	107	165	128	103	19	2,398
Postsecondary Teachers	518	103	42	74	43	38	0	818
Archivists, Curators & Museum Technicians	8	0	0	0	0	0	0	8
Librarians & Library Technicians	23	2	4	1	1	2	0	33
Student, Academic & Other Educational Services Occupations	34	7	11	5	0	11	0	68
Management Occupations	219	33	16	25	21	25	10	349
Business & Financial Occupations	272	21	3	5	4	5	4	314
Computer, Engineering & Science Occupations	67	17	5	5	5	4	0	103
Comm. & Social Serv., Legal, Arts, Design, Sports & Media Occupations	77	27	0	8	28	0	4	144
Healthcare Practitioners & Technical Occupations	9	0	0	0	0	0	0	9
Service Occupations, Sales & Related	112	11	8	14	7	1	0	153
Office & Administrative Support Occupations	142	50	15	26	19	13	1	266
Natural Resources, Construction & Maintenance Occupations	105	14	3	2	0	4	0	128
Production, Transportation & Material Moving Occupations	5	0	0	0	0	0	0	5
By Gender								
Male	665	116	40	60	52	30	7	970
Female	926	169	67	105	76	73	12	1,428
By Race / Ethnicity								
African American	185	12	0	11	37	13	2	260
American Indian/Alaskan Native	11	2	0	0	0	0	0	13
Asian American	49	2	0	2	2	0	1	56
Hispanic American	38	4	6	0	3	0	0	51
Native Hawaiian/Pacific Islander	1	2	0	0	0	0	0	3
Two or More Races	25	6	0	0	0	0	0	31
White American	1,233	257	101	151	86	90	16	1,934
Unknown Ethnicity	34	0	0	1	0	0	0	35
International	15	0	0	0	0	0	0	15
Total Known Minorities**	309	28	6	13	42	13	3	414

* A-State does not include employees for Campus Queretaro, Mexico.

**Minorities include African American, American Indian/Alaskan Native, Asian American, Hispanic American, Native Hawaiian/Pacific Islander, and those reporting two or more races.
Source: Office of Strategic Research, ASU System

System Employee Summary



ASU System

Part-Time Employees by Category

	A-State*	ASUB	ASUMH	Campuses		ASUTR	System Office	Total
				ASUN	ASUMS			
Part-Time Employees	729	130	68	119	104	97	2	1,249
Postsecondary Teachers	222	87	41	84	60	74	0	568
Archivists, Curators & Museum Technicians	0	0	0	0	0	0	0	0
Librarians & Library Technicians	2	0	1	0	0	0	0	3
Student, Academic & Other Educational Services Occupations	75	13	10	7	22	5	0	132
Management Occupations	0	0	0	0	0	0	0	0
Business & Financial Occupations	3	0	0	1	0	2	2	8
Computer, Engineering & Science Occupations	34	2	1	0	0	0	0	37
Comm. & Social Serv., Legal, Arts, Design, Sports & Media Occupations	59	0	0	0	1	0	0	60
Healthcare Practitioners & Technical Occupations	1	0	0	0	0	0	0	1
Service Occupations, Sales & Related	55	13	8	12	15	1	0	104
Office & Administrative Support Occupations	15	15	7	13	6	15	0	71
Natural Resources, Construction & Maintenance Occupations	2	0	0	0	0	0	0	2
Production, Transportation & Material Moving Occupations	8	0	0	2	0	0	0	10
Graduate Assistants	253	n/a	n/a	n/a	n/a	n/a	n/a	253
By Gender								
Male	278	49	29	31	52	34	0	473
Female	451	81	39	88	52	63	2	776
By Race / Ethnicity								
African American	84	4	0	13	47	16	0	164
American Indian/Alaskan Native	1	0	0	0	0	1	0	2
Asian American	17	1	0	1	3	1	0	23
Hispanic American	16	0	1	0	3	0	0	20
Native Hawaiian/Pacific Islander	0	0	0	0	0	0	0	0
Two or More Races	14	3	0	0	0	0	0	17
White American	495	122	67	105	51	79	2	921
Unknown Ethnicity	6	0	0	1	0	0	0	6
International	96	0	0	0	0	0	0	96
Total Known Minorities**	132	8	1	14	53	18	0	226

* A-State does not include employees for Campus Queretaro, Mexico.

**Minorities include African American, American Indian/Alaskan Native, Asian American, Hispanic American, Native Hawaiian/Pacific Islander, and those reporting two or more races.
Source: Office of Strategic Research, ASU System