



System Factbook

2017-2018



The Arkansas State University System serves 23,182 students as the second-largest higher education system in Arkansas.

The Arkansas State University System 2017-2018 Factbook

Any questions concerning
material contained in this
book should be directed to:

The Office of Institutional Effectiveness
Arkansas State University
P.O. Box 790
State University, Arkansas 72467

Telephone: (870)972-3027
Fax: (870)972-3683
E-mail: asuirp@AState.edu

2017-2018 A-State System Factbook cover designed by the
staff of the Office of Publications & Creative Services.

Factbooks produced by
The Office of Institutional Effectiveness
are available in electronic format on our web site at
<http://www.AState.edu/irp>.



Table of Contents

Forward	4
A Quick Reference (Arkansas State University System)	5

ORGANIZATION

Arkansas State University System	9
Arkansas State University	10
Arkansas State University-Beebe	11
Arkansas State University-Mountain Home	12
Arkansas State University-Newport	13
Arkansas State University Mid-South	14
Organizational Structure, ASU System	15
Organizational Structure, A-State	16
Academic Affairs & Research, A-State	17
Finance & Administration, A-State	18
Student Affairs, A-State	19
University Advancement, A-State	20
Institutional Classifications (SREB & Carnegie Foundation)	21

ACADEMIC PROGRAMS

Undergraduate Academic Programs (A-State)	25
Graduate Academic Programs (A-State)	26
Academic Programs (Other ASU System Campuses)	27
Degrees & Certificates Awarded Summary	28
Degrees Awarded by College & Department (A-State)	29
Degrees Awarded by Undergraduate Program (A-State)	30
Degrees Awarded by Graduate Program (A-State)	31

STUDENTS

System Enrollment Summary	35
Total Enrollment	
A-State	36
ASU-Beebe	37
ASU-Mountain Home	38
ASU-Newport	39
ASU Mid-South	40
Geographic Origin of Total Enrollment (A-State)	41
Geographic Origin of International Students (A-State)	42
Enrollment & SCH by Legal Residence (A-State)	43
Enrollment by College & Department (A-State)	44

Undergraduate Enrollment by Degree Program (A-State).....	45
Graduate Enrollment by Degree Program (A-State).....	46
Enrollment by College & Career (A-State).....	47
SCH Production by College & Career (A-State).....	48
Full-Time Equivalent Enrollment (A-State)	49
SCH Production (A-State)	50
New Student Applications (A-State)	51
First-Time Freshmen (A-State).....	52
Academic Preparation - Admission Test Scores (A-State)	53
Academic Preparation - Remediation (A-State)	54
Academic Progress - Retention Rates (A-State).....	55
Academic Progress - Graduation Rates (A-State).....	56
Undergraduates (A-State)	57
Undergraduate Transfer Students (A-State).....	58
Graduates (A-State)	59
Alumni Statistics (A-State).....	60
Student Athletes (A-State).....	61
Athletic Administration (A-State).....	62
Dean B. Ellis Library (A-State).....	63
Student Costs - Tuition & Required Fees	64
Student Costs - Residence Life (A-State).....	65
Financial Aid (A-State).....	66
Arkansas State University Donors (A-State)	67

EMPLOYEES

System Employee Summary	71
Full-Time Instructional Faculty (A-State)	72
Full-Time Instructional Faculty Statistics (A-State).....	73
Full-Time Instructional Faculty Salaries (A-State)	74
Full-Time Staff Statistics (A-State).....	75

Forward

Welcome to the **2017-2018 Arkansas State University System Factbook!** The ASU System Factbook is a publication produced by the Office of Institutional Effectiveness that outlines enrollment, faculty and staff data, and other comprehensive information for the Arkansas State University campuses at Jonesboro, Beebe, Mountain Home, Newport and West Memphis. The ASU System Factbook is produced annually and is intended to provide answers to questions that are frequently asked by the administration, faculty, staff, students, alumni and other university constituents.

The definitions and guidelines used to compile this information are provided by the Integrated Postsecondary Education Data System (IPEDS), the Arkansas Department of Higher Education (ADHE), the Office for Civil Rights (OCR) and the National Collegiate Athletic Association (NCAA). It is important to note that the information in this factbook may differ from data reported by the Office of Institutional Effectiveness to federal, state and regional agencies due to differences in reporting guidelines, reporting definitions, and the timing of when the information was prepared.

In order to make information more readily available to all constituents, the ASU System Factbook is available in PDF format on the Institutional Effectiveness web site. You can reach our web site through the Arkansas State University Home Page, or you can go to our site directly at

<http://www.AState.edu/irp>

A comprehensive document of this magnitude requires the assistance of a number of people on the various ASU campuses. Many thanks to all who helped make the **2017-2018 Arkansas State University System Factbook** a successful reality. A special thanks goes out to the Office of Publications and Creative Services' staff for their contribution in the 2017-2018 ASU System Factbook cover and tab inserts. Should you have any questions, comments or corrections regarding this document, please contact the Office of Institutional Effectiveness. (P.O. Box 790, State University, Arkansas, 72467; Phone: (870)972-3027; Fax: (870)972-3683; E-mail: asuirp@Astate.edu)

A Quick Reference

Arkansas State University System

Number of Students Fall 2017

Enrollment, All Locations 23,396

**Headcount, All Locations includes 214 students enrolled at Campus Queretaro. Per IPEDS methodology, only United States based students are included in data breakdowns in this Factbook for Institutional Effectiveness data.*

Arkansas State University System (excludes Queretaro)
 Enrollment 23,182
 Full-Time-Equivalent (FTE)..... 15,602

Undergraduate

Jonesboro (68.9%) 9,604
 Beebe* 3,738
 Mountain Home 1,441
 Newport* 2,512
 Mid-South 1,561

Graduate

Jonesboro (31.1%) 4,326

Male

Jonesboro (38.3%) 5,337
 Beebe (40.6%) 1,519
 Mountain Home (41.8%) 603
 Newport (42.8%) 1,074
 Mid-South (40.2%) 627

Female

Jonesboro (61.7%) 8,593
 Beebe (59.4%) 2,219
 Mountain Home (58.2%) 838
 Newport (57.2%) 1,438
 Mid-South (59.8%) 934

Ethnic Minorities (non-Caucasian, excludes Unknown & International)

Jonesboro (18.9%) 2,637
 Beebe (17.9%) 670
 Mountain Home (6.9%) 99
 Newport (21.9%) 550
 Mid-South (66.5%) 1,038

Age

	Under 25	25 & Older
Jonesboro.....	8,470	5,460
Beebe	2,886	852
Mountain Home.....	966	475
Newport.....	1,774	738
Mid-South	1,198	363

Enrollment from Arkansas

Jonesboro (72.6%)10,114
 Beebe (98.0%) 3,664
 Mountain Home (95.4%) 1,374
 Newport (95.4%) 2,397
 Mid-South (89.9%) 1,404

Enrollment from Out-of-State

Jonesboro (22.3%) 3,102
 Beebe (1.4%) 52
 Mountain Home (4.6%) 66
 Newport (4.5%) 114
 Mid-South (10.1%) 157

Enrollment from Foreign Countries

Jonesboro (5.1%) 714
 Beebe (0.6%) 22
 Mountain Home (<0.1%) 1
 Newport (<0.1%) 1
 Mid-South (0.0%) 0

Academic Awards & Degrees

Fiscal Year 2016-2017

Certificate

Jonesboro 31
 Beebe 936
 Mountain Home 420
 Newport 631
 Mid-South 413

Associate

Jonesboro 554
 Beebe 674
 Mountain Home 243
 Newport 238
 Mid-South 143

Bachelor's

Jonesboro 1,782

Graduate

Jonesboro (includes Graduate Certificates) 2,068

Tuition & Required Fees

Fall 2017

Based on 15 Hour Load for Undergraduate Students and 9 Hour Load for Graduate Students for the Fall 2017 Semester

Undergraduate Resident

Jonesboro \$4,239
 Beebe 1,770
 Mountain Home 1,770
 Newport 1,725
 Mid-South 2,000

Undergraduate Nonresident

Jonesboro \$7,389
 Beebe 2,850
 Mountain Home 2,775
 Newport 2,640
 Mid-South 2,600

Graduate

Resident \$3,060
 Nonresident 5,463

Full-Time Employees

Fall 2017

Campuses	Faculty	Staff
Jonesboro**	529	1,081
Beebe	116	177
Mountain Home	43	67
Newport	73	91
Mid-South	44	100

Facilities

Fiscal Year 2016-2017

Campuses	# Acres	# Buildings
Jonesboro	1,477	158
Beebe	706	69
Mountain Home	130	7
Newport	214	25
Mid-South	92	14

*NOTE: Beebe's enrollment includes Heber Springs and Searcy. Newport's data includes the Commercial Driving Technical Certificate Program, the ASU Technical Center at Marked Tree and the Jonesboro Technical Center.

**NOTE: Jonesboro's faculty includes instructional and research faculty.

Information Source: The Office of Institutional Effectiveness: web address: www.AState.edu/irp; email address: asuipr@AState.edu



Organization

Arkansas State University System

BOARD OF TRUSTEES

The Trustees of Arkansas State University serve as a board of management and control of Arkansas State University campuses in Jonesboro, Beebe, Mountain Home, Newport, Mid-South and Heber Springs.

In this capacity, the Trustees hire the Arkansas State University president to serve as the Chief Executive Officer, approve the curriculum of the institution, annually approve an operating budget, establish policies for the efficient operation of the institution, and approve those matters which require participation of the governing board of the University. Trustees' duties include: appointing, supporting, and assessing the performance of the president; maintaining the clarity of the mission of Arkansas State University; approving long-range plans; approving the educational program; ensuring the well-being of the students, faculty and staff; ensuring strong financial management; approving significant faculty and staff appointments and dismissals; ensuring adequate resources for quality programs; preserving institutional autonomy; interpreting the campus to the community; and interpreting the needs of society to the campus.

The governor of Arkansas appoints members of the Board of Trustees for a period of five years. The Senate of the General Assembly must confirm each appointment.

BOARD OF TRUSTEES W/TERM ENDING

Dr. Tim Langford, Chair; Little Rock - 2019
 Mr. Niel Crowson, Vice Chair; Jonesboro - 2020
 Ms. Stacy Crawford, Secretary; Jonesboro - 2021
 Mr. Price Gardner, Little Rock - 2022
 Ms. Christy Clark, Little Rock - 2023

UNIVERSITY SYSTEM LOGO



PRESIDENT OF ARKANSAS STATE UNIVERSITY SYSTEM

Dr. Charles L. Welch

CHANCELLOR OF A-STATE

Dr. Kelly Damphousse

INTERIM CHANCELLOR OF ASU-BEEBE

Dr. Roger Moore

CHANCELLOR OF ASU-MOUNTAIN HOME

Dr. Robin Myers

CHANCELLOR OF ASU-NEWPORT

Dr. Sandra Massey

CHANCELLOR OF ASU MID-SOUTH

Dr. Debra West

VISION AND MISSION STATEMENTS

Vision: The Arkansas State University System will create better educated citizens prepared for a global and technological society by providing quality undergraduate and graduate education, useful research and dedicated public service.

Mission: *The mission of the Arkansas State University System is to contribute to the educational, cultural, and economic advancement of Arkansas by providing quality general undergraduate education and specialized programs leading to certificate, associate, baccalaureate, masters, professional and doctoral degrees; by encouraging the pursuit of research, scholarly inquiry and creative activity; and by bringing these intellectual resources together to develop the economy of the state and the education of its citizens throughout their lives.*

Each component of the Arkansas State University System will be characterized by:

- A supportive learning environment; personal development, leadership and service opportunities; and facilities, technologies and support necessary to meet the needs of students, faculty and staff;

- Racial, ethnic, gender and cultural diversity in the faculty, staff and student body, supported by practices and programs that embody the ideals of an open, democratic, and global society;

- Instructional technologies, student support services, and on-line and distance education to advance the purposes of teaching and learning;

- A commitment to sharing human, physical, information and other resources among system components, and with state agencies, schools and higher education institutions, to expand and enhance programs and services available to the citizens of Arkansas.

Arkansas State University

Dr. Kelly Damphousse, Chancellor since 2017

Arkansas State University Mission Statement:
Arkansas State University educates leaders, enhances intellectual growth and enriches lives.

Arkansas State University's main campus in Jonesboro is located in Northeast Arkansas. Jonesboro is the fifth largest populace city in the state and has a trade, cultural and medical center for a market area of more than a half million people.

HISTORY

Arkansas State University (A-State) was established in 1909 as a state agriculture school. The institution opened as a vocational high school in 1910 and changed to State Agricultural and Mechanical College in 1925. Authority to extend the curriculum, offer senior college work and grant degrees was given to the institution by the legislature in 1925. Senior college work was initiated in 1930, and the first bachelor's degrees were granted in 1931. In 1933, the legislature changed the name of the college to Arkansas State College. Master's degree graduate programs were initiated in 1955 and Doctorate degree programs were added in 1999. Arkansas State College was granted university status in January 1967.

Since 1909, the institution that evolved into A-State has been served by thirteen presidents/chancellors.

Previous presidents/chancellors and their terms of service were:

- ◆ Mr. V.C. Kays, 1909-43; ◆ Dr. Horace Thompson, 1943-45;
- ◆ Dr. William J. Edens, 1946-51; ◆ Dr. Carl R. Reng, 1951-75;
- ◆ Dr. Ross Pritchard, 1975-78; ◆ Mr. Carl Whillock, 1978-80;
- ◆ Mr. Ray Thornton, 1980-84; ◆ Dr. Eugene Smith, 1984-92;
- ◆ Dr. John N. Mangieri, 1992-94; ◆ Dr. Leslie Wyatt, 1995-2006;
- ◆ Dr. Robert L. Potts, 2006-2010; ◆ Dr. Tim Hudson, 2012-2016

PROVOST

VICE CHANCELLOR OF A-STATE

Dr. Lynita Cooksey – Academic Affairs & Research

VICE CHANCELLORS OF A-STATE

Dr. Len T. Frey – Finance & Administration

Dr. Rick Stripling – Student Affairs

Dr. Jason Penry – University Advancement

OFFICE OF RECRUITMENT

P.O. Box 1800

State University, AR 72467

ADMISSIONS, RECORDS & REGISTRATION

P.O. Box 1570

State University, AR 72467

OFFICE OF INTERNATIONAL PROGRAMS

P.O. Box 2230

State University, AR 72467

WEB SITE

AState.edu

PROGRAMS OF STUDY

Arkansas State University offers programs at the doctoral, specialist, master's, bachelor's and associate degree levels through the colleges of Agriculture & Technology, Business, Education & Behavioral Science, Engineering, Liberal Arts & Communications, Nursing & Health Professions, Sciences & Mathematics and Undergraduate Studies. Additionally, A-State offers degree programs at Beebe, Mountain Home, Newport, West Memphis and online.

ACCREDITATION

In order to maintain the highest quality in all its programs, A-State actively seeks evaluation from accreditation visits and program reviews to monitor academic quality. Academic programs are accredited by the regional accrediting agency for all programs. Individual programs are accredited by specialized accrediting agencies for the respective programs.

Accrediting Organizations: Higher Learning Commission of the North Central Association; AACSB International; Accreditation Commission for Education in Nursing; American Chemical Society; Accrediting Council on Education in Journalism and Mass Communications; Commission on Accreditation of Allied Health Education Programs; Commission on Accreditation in Physical Therapy Education; Commission on Accreditation of Athletic Training Education; Council for the Accreditation of Counseling and Related Education Programs; Council for the Accreditation of Educator Preparation; Council on Academic Accreditation in Audiology and Speech-Language Pathology; Council on Accreditation of Nurse Anesthesia; Council on Rehabilitation Education; Council on Social Work Education; Engineering Accreditation Commission of the Accreditation Board for Engineering and Technology, Inc.; Joint Review Committee on Education in Diagnostic Medical Sonography; Joint Review Committee on Education in Nuclear Medicine Technology; Joint Review Committee on Education in Radiologic Technology; National Accrediting Agency for Clinical Laboratory Sciences; National Alliance of Concurrent Enrollment; National Association of Schools of Art and Design; National Association of Schools of Music; National Association of Schools of Public Affairs and Administration; National Association of School Psychologists; National Association of Schools of Theatre; National Council for Accreditation of Teacher Education; National League for Nursing Accrediting Commission; Network of International Business Schools

Arkansas State University-Beebe

Dr. Roger Moore, Interim Chancellor since 2017

Arkansas State University-Beebe Mission Statement:
Transforming lives through quality learning experiences.

HISTORY

As the oldest two-year college in the state, ASU-Beebe has paved the way in making a quality education affordable and attainable for Central Arkansas students. In 1927, ASU-Beebe was founded as Junior Agricultural School of Central Arkansas after Beebe citizens donated 300 acres of land to start the school. In 1931, the name was changed to Junior Agricultural College of Central Arkansas, and a college curriculum was established. The college has been affiliated with the Arkansas State University System since 1955.

ASU-Beebe has established a strong reputation of providing quality, affordable instruction and service programs to its surrounding communities. Located 31 miles north of Little Rock, it is the tenth largest college in the state and has an enrollment greater than four of Arkansas' public four-year colleges. It is the only Arkansas two-year college with residence halls, and has recently built new suite-style residence halls to better serve student needs.

ASU-Beebe has a tremendous positive impact on the economy of Central Arkansas, contributing over \$316 million annually to the regional economy through its operations, capital spending and workforce comprised of former students. ASU-Beebe has maintained its commitment to the development of top-notch learning facilities throughout the years by expanding and renovating facilities on each of the campuses.

CORE VALUES

While strengthening our practice of being student-centered, we will guide our internal conduct as well as our relationships with those we serve by applying the values of integrity, diversity and global awareness, excellence, access and student-centered (IDEAS).

INTEGRITY

We value integrity by having honesty and truthfulness in the consistency of our actions, methods and principles.

DIVERSITY AND GLOBAL AWARENESS

We value diversity and global awareness by assisting our students and employees to increase their exposure to and understanding of our diverse local, state and global societies and their impact on cultural and economic well-being.

EXCELLENCE

We value continuous improvement and strive for excellence by accomplishing our tasks with distinction.

ACCESS

We value access to educational opportunities by providing multiple locations, diverse programs and delivery methods.

STUDENT-CENTERED

We value a student centered culture by focusing on the needs, abilities, interests and education of our students as our highest priority.

PROGRAMS OF STUDY

ASU-Beebe has established itself as a center of academic excellence, continually having one of the highest retention and graduation rates among Arkansas two-year colleges. In fact, the Aspen Institute ranked ASU-Beebe in the top 10% twice. It offers high-quality Associate of Arts in Liberal Arts degrees with the option of choosing coursework from the fine arts, the sciences, the social sciences, education, health sciences, mathematics, foreign languages, English and history. In addition, ASU-Beebe has the only Associate of Fine Arts in Music program available at any two-year college in the state. ASU-Beebe offers small class sizes, great access to faculty and full-time tutoring for students. It also strives to promote campus safety and has been ranked as the safest college campus in the nation by StateUniversity.com.

ASU-Beebe is a leader in the state for vocational and technical education. In addition to Associate of Applied Science, Associate of Arts, Associate of Arts in Teaching, Associate of Fine Arts, Associate of General Studies and Associate of Science in Health Sciences degrees, Computer Information Systems, Agriculture, Business or Criminal Justice. ASU-Beebe offers certificates of proficiency and one-year technical certificates that are designed to prepare students to meet the needs of today's rapidly evolving industries. Through its advanced technology division, programs are available with emphasis on the fast-changing needs of a modern industrial society. Advanced technology programs offered include computer systems and networking technology, computer-aided drafting/design, industrial technology, general technology, John Deere agriculture equipment technology, electronics technology and medical laboratory technology. In 2007, ASU-Beebe founded the state's only veterinary technician training program, providing the opportunity for students to obtain an Associate of Applied Science in Veterinary Technology degree. In addition to its credit students, ASU-Beebe serves approximately 3,600 continuing education or workforce development students each year.

ARKANSAS STATE UNIVERSITY-BEEBE

P.O. Box 1000
Beebe, AR 72012-1000
(501)882-3600
www.asub.edu

ACCREDITATION

ASU-Beebe is accredited by the Higher Learning Commission of the North Central Association of Colleges and Schools and by the National Accrediting Agency for Clinical Laboratory Sciences. In addition, among other accreditations, the Veterinary Technology and concurrent enrollment programs are accredited, and ASU-Beebe has the only nationally-accredited Pharmacy Technician program in the state. ASU-Beebe is certified by the Arkansas State Board of Nursing, the Arkansas Office of Emergency Medical Services and the National Automotive Technicians Education Foundation.

Arkansas State University-Mountain Home



Dr. Robin Myers, Chancellor since 2012

Arkansas State University-Mountain Home Mission Statement:
The mission of ASUMH is to LEAD through educational opportunities.
Lifelong Learning,
Enhanced Quality of Life,
Academic Accessibility, and
Diverse Experiences

HISTORY

In 1991, the Arkansas General Assembly created technical colleges from the Baxter County Vocational-Technical Center and the North Arkansas Community/Technical College Center in Mountain Home. Mountain Home Technical College was established on July 1, 1991. In 1992, the Mountain Home Technical College agreed to seek affiliation with Arkansas State University to form a sister campus. On July 1, 1993, Mountain Home Technical College became Arkansas State University Mountain Home Technical College.

Arkansas State University-Mountain Home (ASUMH) was established on July 1, 1995 due to the commitment of the residents of Baxter County and the cooperation of the Department of Higher Education and Arkansas State University in Jonesboro.

ASUMH has an open door admissions policy. This policy is designed to enhance access to educational opportunities. Standards of quality are maintained and students are required to remove deficiencies before entering certain programs or courses.

Nestled in the beautiful Ozark Mountains, 156 miles north of Little Rock, the environment at ASUMH encourages free expression, leadership and innovation. Small class size means personal attention and support from instructors. Additionally, the construction of a new campus accommodating 1,200 students offers an even more appealing setting for students to pursue higher education.

PROGRAMS OF STUDY

An Associate of Arts is offered for those students needing maximum flexibility in the selection of a course of study to meet individual employment and educational needs. It can be designed to meet the General Education requirements for those individuals planning to transfer to a four-year institution in order to complete a bachelor's degree. Associates of Applied Science are offered in Crime Scene Investigation, Criminal Justice, Funeral Science, Information Systems Technology, Law Enforcement Administration, Management, Nursing, Paramedic Technology, Respiratory Care and Welding Technology. Also offered is an Associate of Arts in Teaching, Associate of General Studies and an Associate of Science in Business, Criminal Justice and Early Childhood Education. Technical Certificates are offered in Crime Scene Investigation, Electronics Technology, Funeral Directing, General Business, Health Professions, Information Systems Technology, Law Enforcement Administration, Paramedic Technology, Practical Nursing and Welding Technology.

A-State and ASUMH have formed a partnership to offer various bachelor's and graduate degree programs through the Center for Advanced Studies on the Mountain Home campus. The bachelor's degrees are offered by building on the existing Associate of Arts degree offered at ASUMH. The Center currently offers bachelor's degrees in Agricultural Business, Business Administration, Clinical Lab Science, Criminology, Early Childhood Education, Management, Middle-Level Education, Nursing and Technology. Master's degrees are offered in Business Administration, Curriculum and Instruction, and Educational Leadership.

ACCREDITATION

ASUMH is accredited by the Higher Learning Commission of the North Central Association (Thirty North LaSalle, Suite 2400, Chicago, IL 60602), the American Board of Funeral Service Education, and the Arkansas State Board of Nursing.

ARKANSAS STATE UNIVERSITY-MOUNTAIN HOME

1600 S. College Street
Mountain Home, AR 72653
(870)508-6100
www.asumh.edu

ASU-Mountain Home Campus



Arkansas State University-Newport

Dr. Sandra Massey, Chancellor since 2013

Arkansas State University-Newport Mission Statement:

*To Provide Integrity of Programs and Services;
Affordable Life Long Learning;
and Enhanced Quality of Life
In the Diverse Community We Serve*

HISTORY

Arkansas State University-Newport (ASUN) has been in continuous operation since August 1975. Prior to being named ASU-Newport, the campus was known as White River Vocational Technical School. In 1991, the Arkansas Legislature passed Act 1244 which merged White River Vocational Technical School with ASU-Beebe. In 1992, it became ASU-Beebe/Newport and in 1997 became ASU-Newport. The 83rd General Assembly of the Arkansas Legislature passed Act 297 into law on February 19, 2001, creating a separate budget appropriation for ASUN effective July 1, 2001. The Higher Learning Commission of the North Central Accreditation Association of Colleges and Schools (NCA) granted the college initial accreditation for stand-alone status for five years in August 2002. In April 2007, the college received ten year accreditation status from the NCA. In March 2001, the state legislature approved the merger of Delta Technical Institute with Arkansas State University to produce the ASU Technical Center (ASUTC). In 2008, ASUTC was aligned with ASUN.

PROGRAMS OF STUDY

Programs and services are designed to assist students (both traditional and nontraditional) in determining and achieving their educational, personal and career goals.

These programs and services include associate degrees, certificates, continuing education, workforce development, adult education, ESL and opportunities through the Career Pathways program.

The college offers transfer degree programs, including an online degree (AA in Liberal Arts), an AA degree in Teaching (including Middle School and P-4 grade options) and Computer Information Systems, applied science degrees (including RN and General Technology with an emphasis in such areas as High Voltage Lineman Technology), technical certificates in such areas as Practical Nursing, Business Technology, High Voltage Lineman Technology, and Diesel Mechanics and certificates of proficiency in such diverse areas as CNA and Truck Driver Training (the largest commercial driver training program in the state).

Partnering with business and industry and working to meet the local, county and regional needs of its students and employers, ASU-Newport is truly a "Great Place to Start."

ARKANSAS STATE UNIVERSITY-NEWPORT

7648 Victory Blvd.
Newport, AR 72112
(870)512-7800
www.asun.edu

ACCREDITATION

ASUN is accredited by the Higher Learning Commission of the North Central Association of Colleges and Schools (Thirty North LaSalle, Suite 2400, Chicago, IL 60602) and the Arkansas State Board of Nursing, the National Automotive Technicians Education Foundation, The Arkansas State Board of Cosmetology, the Arkansas Department of Health Section of EMS and Trauma Systems, and the Committee on Accreditation of Educational Programs for the Emergency Medical Services Professions.

ASU-Newport's
Student/Community Center



Arkansas State University Mid-South

Dr. Debra West, Chancellor since 2015

Arkansas State University Mid-South Mission Statement:

ASU Mid-South is a public two-year institution of higher education with an open-door admission policy, serving Crittenden County, Arkansas, and the surrounding areas with a comprehensive educational program. The College is committed to economic development in the Arkansas Delta through the provision of high quality, affordable, and convenient learning opportunities and services consistent with identified student, community, and regional needs.

To meet these needs, the College provides quality academic and support programs, personnel, technology, administrative services, and facilities necessary to respond in a timely and effective manner.

HISTORY

The evolution of ASU Mid-South began in 1991 following the Arkansas Legislature's approval of Act 1244. The legislation provided for the conversion of fourteen of Arkansas' vocational-technical schools into technical colleges, branches of four-year institutions, or community colleges with the additional support of a local millage. Ten "vo-techs," including Mid-South, accepted the conversion challenge.

The decision could easily be described as a "leap of faith," considering the early history of the institution. In operation since 1979, the school experienced little growth or support during its first 12 years of existence. At the time of its conversion to a technical college, Mid-South served fewer than 100 students annually and offered primarily adult education classes, truck driver training, practical nursing, and data processing/clerical support courses.

Section 22 of Act 1244 allowed newly-formed technical colleges to convert to community colleges with the passage of a local millage and approval of the State Board of Higher Education. Mid-South became the only vocational technical school to take this additional step. The Board of Trustees considered conversion to a community college essential to address the weak economy, unemployment, and alarmingly low college-attendance rate in Crittenden County. The State Board of Higher Education approved the application for conversion on October 23, 1992. A steering committee proposed a county-wide levy of four mills, a recommendation ratified by the Mid-South Technical College Board of Trustees. The voters of Crit-

tenden County put their stamp of approval on the effort with overwhelming support on February 16, 1993. Later that year, the State Board of Higher Education granted the College authority to offer its first degree.

PROGRAMS OF STUDY

ASU Mid-South offers degree and certificate programs to meet student and community needs. Program courses address general education knowledge as well as behaviors needed for good citizenship and successful careers.

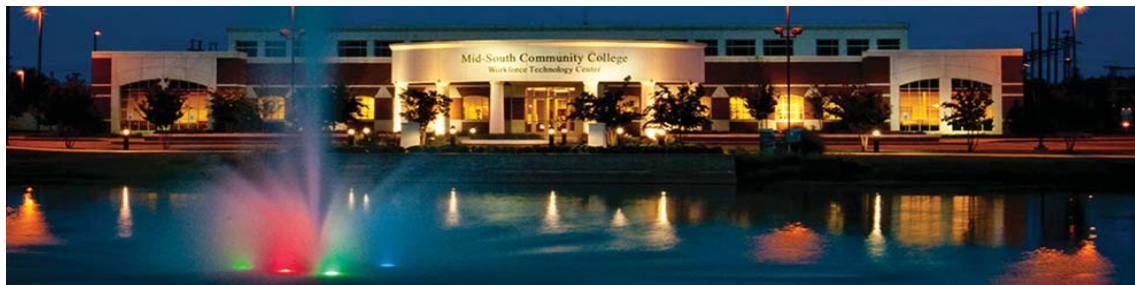
Programs offered are Aviation Technology, Business, Diesel Technology, Digital Media, Emergency Tech, General Education, Hospitality, Information Technology, Machine Technology, Mechatronics, Medical Assistant, Nursing Assistant, Process Control, Respiratory Therapy, Teaching, and Welding Technology.

ARKANSAS STATE UNIVERSITY MID-SOUTH

2000 West Broadway
West Memphis, AR 72301
(870)733-6722
www.midsouthcc.edu

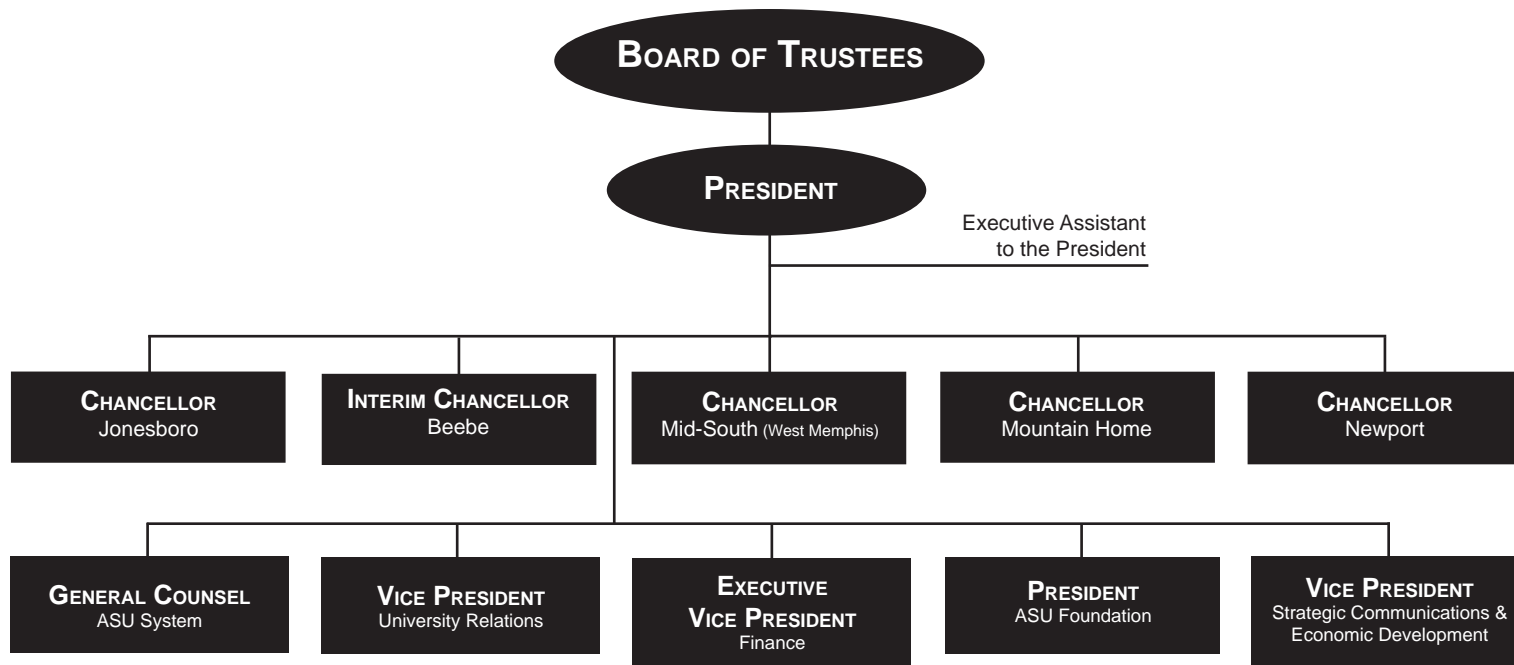
ACCREDITATION

ASU Mid-South is accredited by the Higher Learning Commission of the North Central Association of Colleges and Schools. ASU Mid-South's Nursing Assistant Program is certified by the Arkansas Department of Human Services Division of Medical Services Office of Long Term Care. The Emergency Medical Assistant Program is certified by the Arkansas Department of Health Section of Emergency Medical Services. The Pharmacy Technology program is accredited by the American Society of Health-System Pharmacists. The Respiratory Care program is accredited by the Commission on Accreditation for Respiratory Care (CoARC).



Arkansas State University System

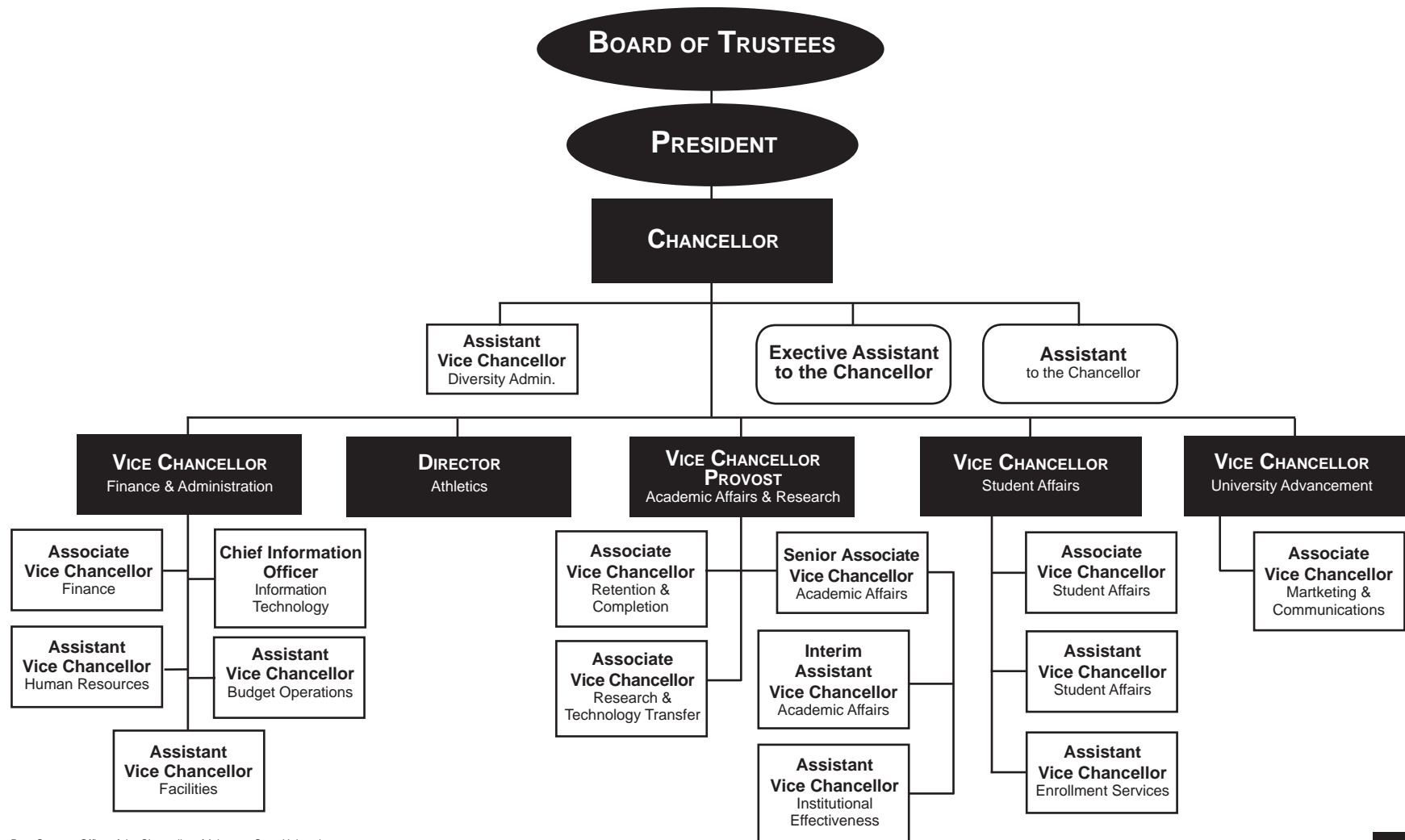
2017-2018 Organizational Structure



Arkansas State University



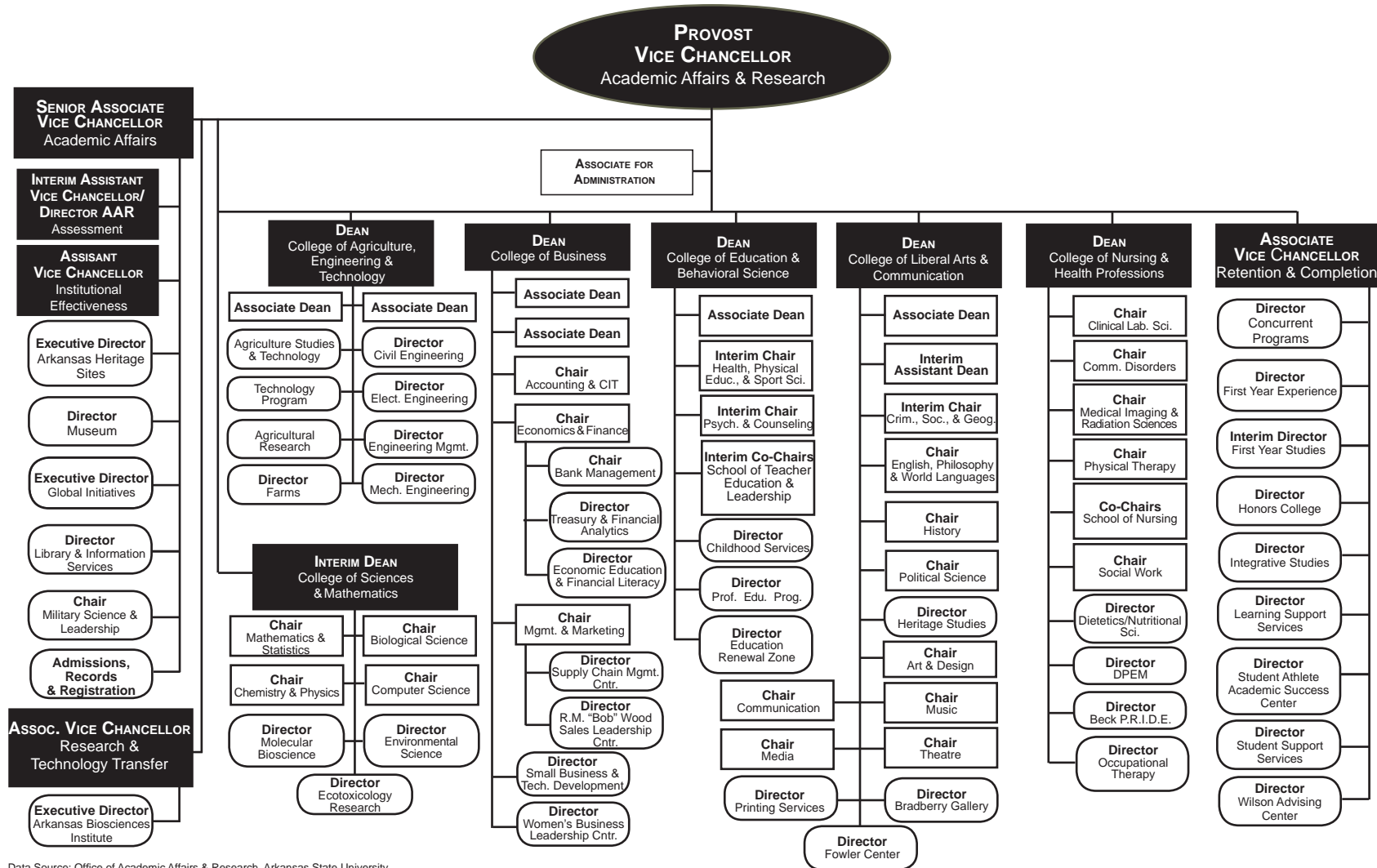
2017-2018 Organizational Structure



Data Source: Office of the Chancellor of Arkansas State University
 Information Source: The Office of Institutional Effectiveness: web address: www.AState.edu/irp; email address: asuipr@ASState.edu

Academic Affairs & Research, A-State

2017-2018 Organizational Structure

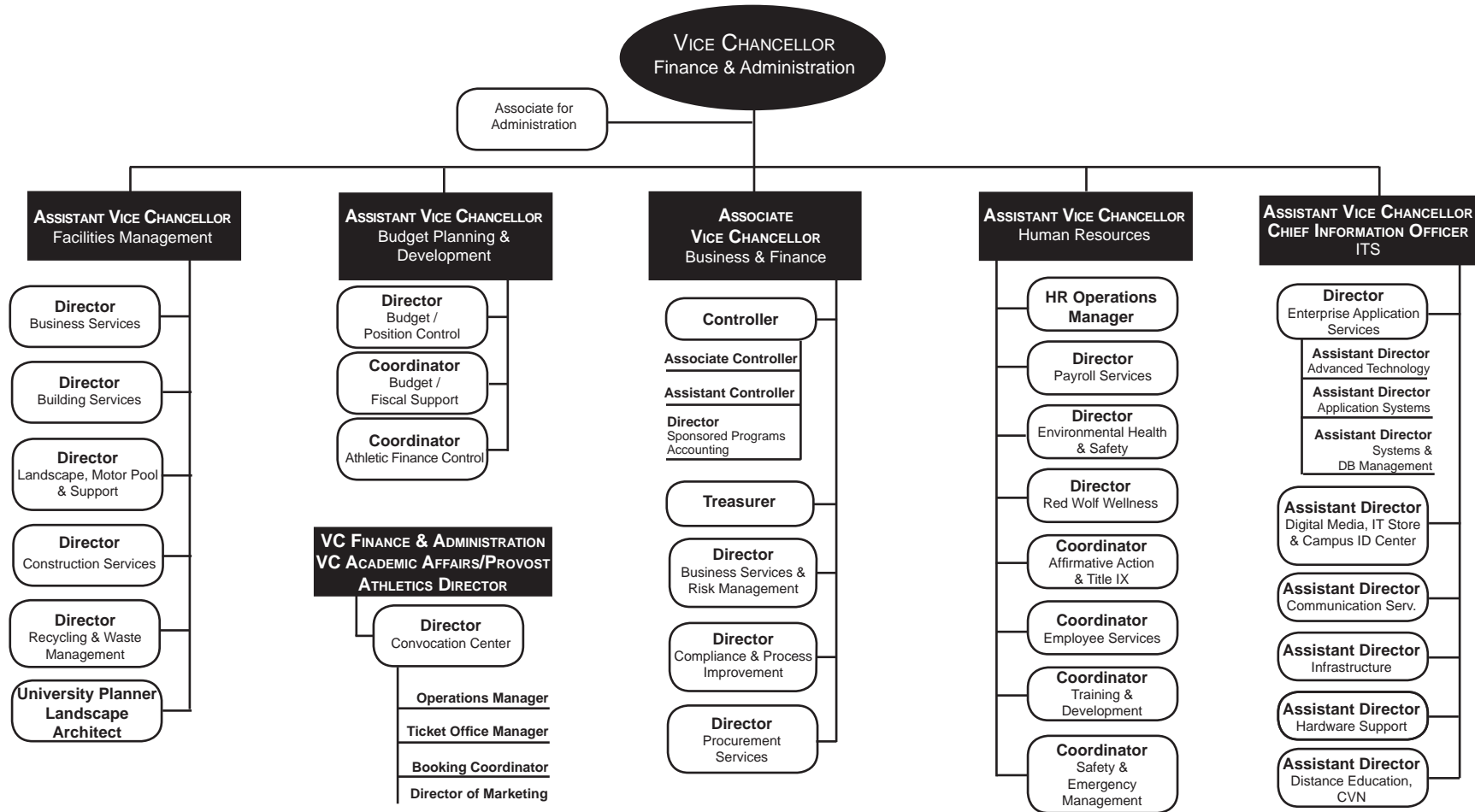


Data Source: Office of Academic Affairs & Research, Arkansas State University
 Information Source: The Office of Institutional Effectiveness; web address: www.AState.edu/irp; email address: asuip@AState.edu

Finance & Administration, A-State



2017-2018 Organizational Structure

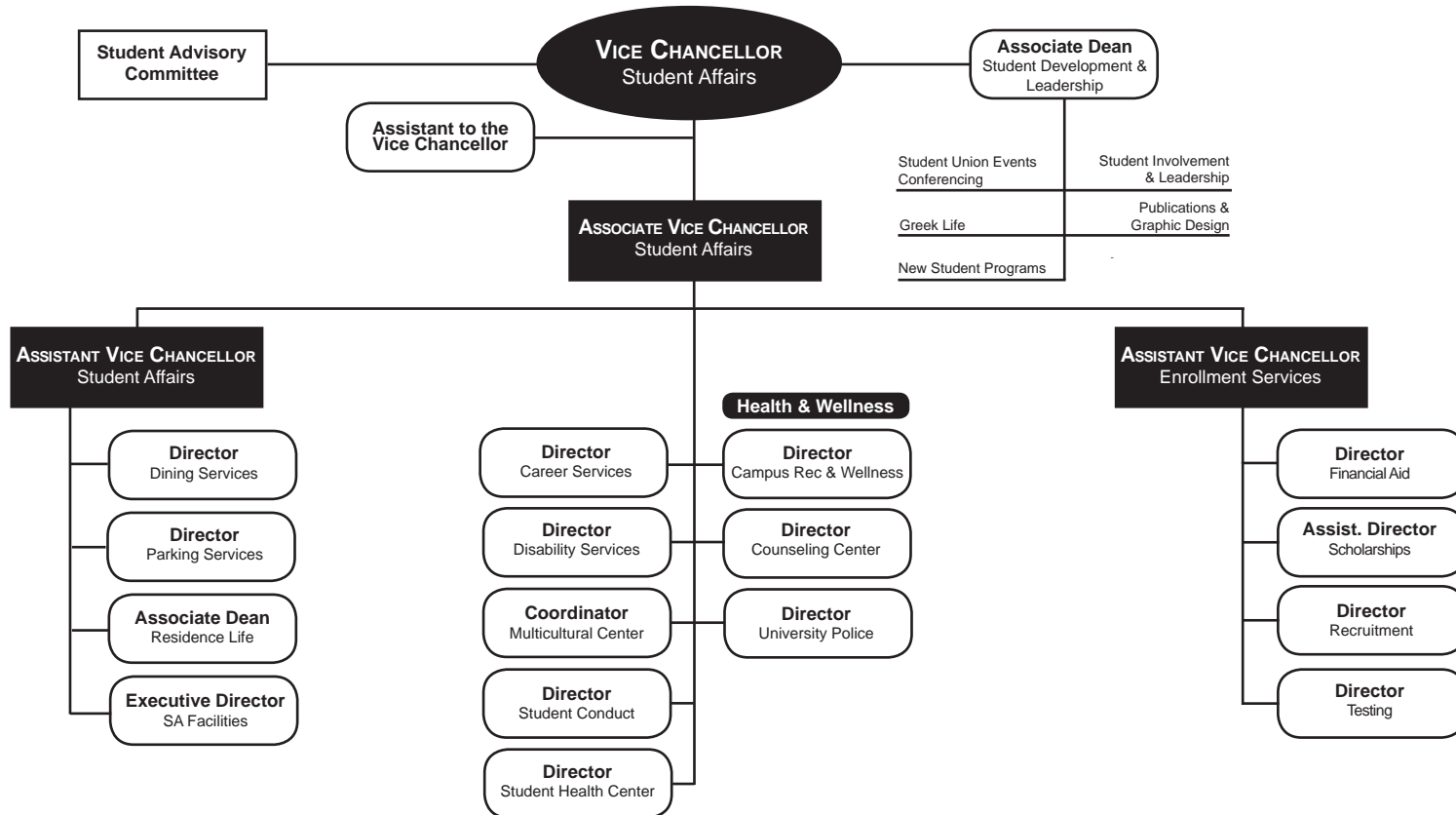


Data Source: Office of Finance & Administration, Arkansas State University
 Information Source: The Office of Institutional Effectiveness: web address: www.AState.edu/irp; email address: asuirp@AState.edu

Student Affairs, A-State



2017-2018 Organizational Structure

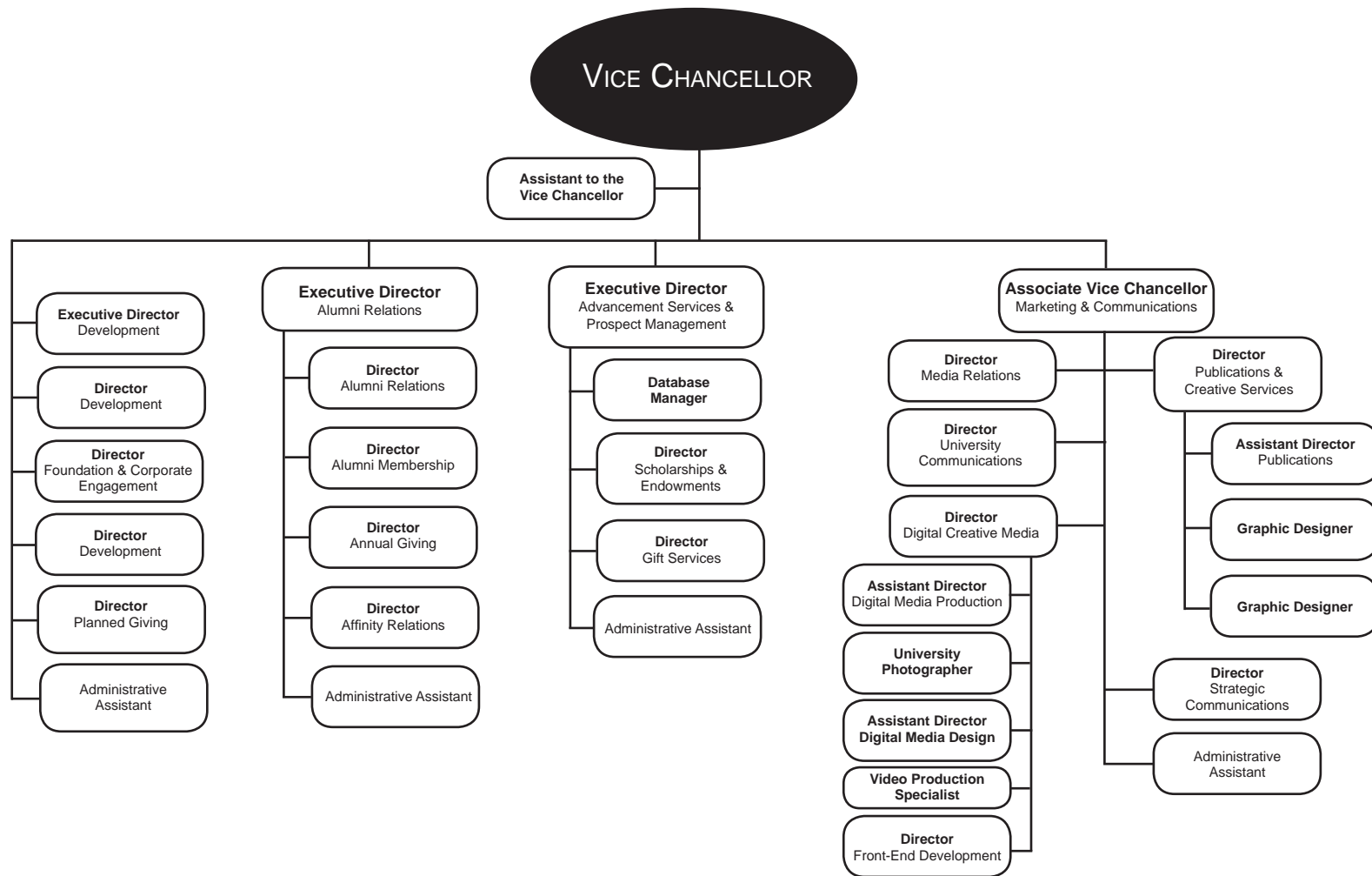


Data Source: Office of Student Affairs, Arkansas State University
 Information Source: The Office of Institutional Effectiveness: web address: www.AState.edu/irp; email address: asuip@AState.edu

University Advancement, A-State



2017-2018 Organizational Structure



Data Source: Office of University Advancement, Arkansas State University
 Information Source: The Office of Institutional Effectiveness: web address: www.AState.edu/irp; email address: asuip@AState.edu

Institutional Classifications

Southern Regional Education Board (SREB) & Carnegie Foundation

SREB CLASSIFICATIONS

The SREB system for categorizing postsecondary education institutions is based upon a number of factors relevant to determining resource requirements. Differences in institutional size (*number of degrees*), role (*types of degrees*), breadth of program offerings (*number of program areas in which degrees are granted*), and comprehensiveness (*distribution of degrees across program areas*) are the factors upon which institutions are classified.

Institutions are assigned to categories for a report year using the previous academic year's data on program completions. To keep the statistical comparison groups relatively stable over time and to assure that institutions change categories only when their measures on a criterion are relatively stable, institutions change categories when they meet the criterion for another category for the third consecutive year.

♦**Four-Year 1:** Institutions awarding at least 100 doctoral degrees distributed among at least 10 CIP categories (2-digit classification) with no more than 50 percent in any one category. (*University of Arkansas-Fayetteville*)

♦**Four-Year 2:** Institutions awarding at least 30 doctoral degrees distributed among at least 5 CIP categories.

♦**Four-Year 3:** Institutions awarding at least 100 master's, education specialist, post-master's, or doctoral degrees with master's, education specialist, and post-master's degrees distributed among at least 10 CIP categories. (*Arkansas State University, Arkansas Tech University, University of Arkansas-Little Rock, and University of Central Arkansas*)

♦**Two-Year 2:** Institutions awarding associate degrees and offering college transfer courses with FTE enrollment of between 2,000 and 4,999. (*Arkansas State University-Beebe*)

♦**Two-Year 3:** Institutions awarding associate degrees and offering college transfer courses with FTE enrollment of less than 2,000. (*Arkansas State University-Mountain Home, Arkansas State University-Newport and Arkansas State University Mid-South*)

SREB FOUR-YEAR 3 PEER UNIVERSITIES

Alabama: *Alabama A&M University, Jacksonville State University, Troy University, University of South Alabama*

Arkansas: *Arkansas State University, Arkansas Technical University, University of Arkansas - Little Rock, University of Central Arkansas*

Delaware: *Delaware State University*

Florida: *Florida A&M University, University of North Florida, University of West Florida*

Georgia: *Georgia Southern University, Kennesaw State University, University of West Georgia, Valdosta State University*

Kentucky: *Eastern Kentucky University, Moorehead State University, Murray State University, Western Kentucky University*

Louisiana: *Southeastern Louisiana University, Southern University A&M at Baton Rouge, University of Louisiana at Monroe*

Maryland: *Towson University*

North Carolina: *Appalachian State University, North Carolina A&T State University, North Carolina Central University, University of North Carolina-Wilmington, Western Carolina University*

Oklahoma: *Northeastern State University, University of Central Oklahoma*

South Carolina: *College of Charleston, The Citadel, Winthrop University*

Tennessee: *Austin Peay State University, East Tennessee State University, Middle Tennessee State University, Tennessee Technological University, University of Tennessee at Chattanooga*

Texas: *Angelo State University, Lamar University, Midwestern State University, Prairie View A&M University, Sam Houston State University, Stephen F. Austin State University, Sul Ross State University, Tarleton State University, Texas A&M International University, Texas A&M University Commerce, Texas A&M University Corpus Christi, Texas A&M University Kingsville, Texas Southern University, Texas State University-San Marcos, University of Houston Clear Lake, University of Texas at Brownsville, University of Texas Pan-American, University of Texas-Tyler, University of Texas of the Permian Basin, West Texas A&M University*

Virginia: *James Madison University, Longwood University, Norfolk State University, Radford University, University of Mary Washington, Virginia State University*

West Virginia: *Marshall University*

CARNEGIE CLASSIFICATION

The Carnegie Commission developed a classification of colleges and universities to support its program of research and policy analysis. With the 2005 revision, the single classification was replaced by a set of multiple, parallel classifications. They are organized around three fundamental questions: what is taught (*Undergraduate & Graduate Instructional Programs*), who are the students (*Enrollment Profile & Undergraduate Profile*), and what is the setting (*Size & Setting*).

A-State's Classifications by Category*

Basic: (Master's L - Master's Colleges and Universities with larger programs) *Generally includes institutions that award at least 50 master's degrees and fewer than 20 doctoral degrees per year.*

Size & Setting: (M4/NR - Medium four-year) *Fall FTE enrollment of 3,000 - 9,999 degree seeking students at these bachelor's degree granting institutions. Fewer than 25% of degree-seeking undergraduates live on campus.*

Enrollment Profile: (HU - High undergraduate) *Fall enrollment data show both undergraduate and graduate/professional students, with the graduate enrollment accounting for less than 10-24% of FTE enrollment.*

Undergraduate Profile: (FT4/I - Full-time four-year, inclusive) *Fall enrollment data show at least 80% of undergraduates enrolled full-time at these bachelor's degree granting institutions. At these institutions test scores indicate that they extend educational opportunity to a wide range of students with respect to academic preparation and achievement.*

Undergraduate Instructional Program: (Prof+A&S/SGC - Professions plus arts & sciences, some graduate coexistence) *60-79% of bachelor's degree majors were in professional fields, and graduate degrees were observed in some of the fields corresponding to undergraduate majors (but less than half).*

Graduate Instructional Program: (Doc/Prof - Doctoral, professional dominant) *These institutions award doctoral degrees in a range of fields, with the plurality in the professions other than engineering (such as education, health professions, public policy, or social work).*

*NOTE: The most recent Carnegie Classifications are based on time-specific snapshots of institutional attributes and behavior based on data from 2013/2014.
Data Source: Southern Regional Education Board & The Carnegie Foundation
Information Source: The Office of Institutional Effectiveness: web address: www.AState.edu/irp; email address: asuip@AState.edu



Academics

Undergraduate Academic Programs

Arkansas State University

Associate Degree Programs

ASSOCIATE IN APPLIED SCIENCE
Clinical Laboratory Science
Crime Scene Investigation
Disaster Preparedness & Emergency Management
Law Enforcement
Law Enforcement Administration
Occupational Therapy Assistant
Paramedic
Physical Therapist Assistant

ASSOCIATE IN APPLIED SCIENCE IN NURSING
Nursing

ASSOCIATE IN GENERAL STUDIES
General Studies

ASSOCIATE IN SCIENCE
Accounting
Computer & Information Technology
General Education
Liberal Arts
Technology

ASSOCIATE OF ARTS
General Education

Bachelor's Degree Programs

BACHELOR OF APPLIED SCIENCE
Applied Science

BACHELOR OF ARTS
Art
Chemistry
Communication Studies
Computer Science

BACHELOR OF ARTS (CONT.)
Criminology
Economics
English
Environmental Studies
History
Music
Philosophy
Political Science
Sociology
Theatre
World Languages & Cultures

BACHELOR OF FINE ARTS
Art
Graphic Design

BACHELOR OF GENERAL STUDIES
General Studies

BACHELOR OF MUSIC
Music Performance

BACHELOR OF MUSIC EDUCATION
Instrumental Music Education
Vocal Music Education

BACHELOR OF SCIENCE
Accounting
Biological Sciences
Biotechnology
Business Administration
Business Economics
Chemistry
Clinical Laboratory Science
Communication Disorders
Computer & Information Technology

BACHELOR OF SCIENCE (CONT.)
Computer Science
Creative Media Production
Dietetics
Disaster Preparedness & Emergency Management
Environmental Sciences
Exercise Science
Finance
Forensic Science
Global Supply Chain Management
Health Promotion
Health Studies
Interdisciplinary Studies
International Business
Management
Marketing
Mathematics
Multimedia Journalism
Physics
Psychology
Sport Management
Strategic Communications
Technology
Wildlife, Fisheries & Conservation

BACHELOR OF SCIENCE IN AGRICULTURE
Agricultural Business
Agricultural Studies
Animal Science
Plant Science

BACHELOR OF SCIENCE IN EDUCATION
Biology Education
Business Technology Education
Chemistry Education

BACHELOR OF SCIENCE IN EDUCATION
Elementary Education
English Education
Mathematics Education
Middle Level Education
Physical Education
Physics Education
Social Science Education
Special Education, K-12
World Languages & Cultures Education

BACHELOR OF SCIENCE IN ENGINEERING
Engineering

BACHELOR OF SCIENCE IN CIVIL ENGINEERING
Civil Engineering

BACHELOR OF SCIENCE IN ELECTRICAL ENGINEERING
Electrical Engineering

BACHELOR OF SCIENCE IN MECHANICAL ENGINEERING
Mechanical Engineering

BACHELOR OF SCIENCE IN NURSING
Nursing

BACHELOR OF SCIENCE IN RADIOLOGIC SCIENCES
Radiologic Sciences

BACHELOR OF SOCIAL WORK
Social Work

Graduate Academic Programs

Arkansas State University

Certificate Programs

GRADUATE CERTIFICATE
Addiction Studies
Aging Studies
Building Level Administration
Clinical Mental Health Counseling
Curriculum Director
Dyslexia Therapy
Gifted Talented Creative Teacher
Gifted Talented Director
Health Care Emergency Management
Health Care Management
Health Communications
Health Sciences Education
History
Nurse Educator
Play Therapy
Special Education Director
Special Education Teacher
Student Affairs
Superintendent

Master's Degree Programs

MASTER OF ACCOUNTANCY
Accounting

MASTER OF ARTS
Biological Sciences
Communication Studies
Criminal Justice
English
Heritage Studies
History
Political Science
Sociology

MASTER OF ARTS IN TEACHING
Teaching

MASTER OF ATHLETIC TRAINING
Athletic Training

MASTER OF BUSINESS ADMINISTRATION
Business Administration

MASTER OF COMMUNICATION DISORDERS
Communication Disorders

MASTER OF ENGINEERING MANAGEMENT
Engineering Management

MASTER OF MUSIC
Music Performance

MASTER OF MUSIC EDUCATION
Music Education

MASTER OF PUBLIC ADMINISTRATION
Public Administration

MASTER OF REHABILITATION COUNSELING
Rehabilitation Counseling

MASTER OF SCIENCE
Biology
Chemistry
College Student Personnel Services
Computer Science
Disaster Preparedness & Emergency
Management
Early Childhood Services
Environmental Science
Exercise Science
Health Sciences
Mathematics
Media Management
Molecular Biosciences
Psychological Science
Sports Administration

MASTER OF SCIENCE IN AGRICULTURE
Agriculture

MASTER OF SCIENCE IN EDUCATION
Biology Education
Chemistry Education
Curriculum & Instruction
Early Childhood Education
Educational Leadership
Educational Theory & Practice
English Education
Mathematics Education
Middle Level Education
Physical Education
Reading Education
School Counseling
Social Science Education
Special Education;
Gifted, Talented & Creative
Special Education;
Instructional Specialist, P-4
Special Education;
Instructional Specialist, 4-12
Special Education, K-12

MASTER OF SCIENCE IN ENGINEERING
Engineering

MASTER OF SCIENCE IN MASS COMMUNICATIONS
Mass Communications

MASTER OF SCIENCE IN NURSING
Nurse Anesthesia
Nursing

MASTER OF SOCIAL WORK
Social Work

PROFESSIONAL SCIENCE MASTERS
Biotechnology

Specialist Degree Programs

SPECIALIST IN COMMUNITY COLLEGE TEACHING

EDUCATION SPECIALIST
Educational Leadership
Psychology & Counseling
Reading

Doctoral Degree Programs

DOCTOR OF EDUCATION
Educational Leadership

DOCTOR OF NURSING PRACTICE
Nursing Practice

DOCTOR OF OCCUPATIONAL THERAPY
Occupational Therapy

DOCTOR OF PHILOSOPHY
Environmental Science
Heritage Studies
Molecular Biosciences

DOCTOR OF PHYSICAL THERAPY
Physical Therapy

Arkansas State University offers 47 degrees, advanced certificates and graduate certificates in 178 fields of study. In addition, A-State offers online degrees in undergraduate and graduate studies.

Available at A-State are five associate degrees in sixteen fields, sixteen bachelor's degrees in seventy-eight fields, a graduate certificate in nineteen fields, nineteen master's degrees in fifty-five fields, two specialist degrees in four fields and five doctoral degrees in seven fields.

Associate Degree Programs - Other ASU Campuses

Beebe, Mountain Home, Newport & Mid-South

ASU-Beebe

ASSOCIATE OF APPLIED SCIENCE
Agriculture Equipment Technology
Business Technology
Computer-Aided Drafting & Design
Computer Coding
Computer Systems & Networking Tech.
Crime Scene Investigation
Criminal Justice
Early Childhood Education
Emergency Medical Service
General Technology
Hospitality Administration
Law Enforcement Administration
Medical Laboratory Technology
Pharmacy Technician
Veterinary Technology
Welding Technology

ASSOCIATE OF ARTS
Liberal Arts

ASSOCIATE OF ARTS IN TEACHING
Teaching

ASSOCIATE OF FINE ARTS
Fine Arts

ASSOCIATE OF GENERAL EDUCATION
General Studies

ASSOCIATE OF SCIENCE
Agriculture
Business
Computer Information Systems
Criminal Justice
Education
Environmental Science
Health Sciences
Liberal Arts & Sciences

ASU-Mountain Home

ASSOCIATE OF APPLIED SCIENCE
Crime Scene Investigation
Criminal Justice
Digital Design
Funeral Science
Hospitality Management
Information Systems Technology
Law Enforcement Administration
Management
Nursing
Paramedic Technology
Program/Mobile Development
Respiratory Care
Welding Technology
Workforce Technology

ASSOCIATE OF ARTS
General Education

ASSOCIATE OF ARTS IN TEACHING
Teaching

ASSOCIATE OF GENERAL STUDIES
General Studies

ASSOCIATE OF SCIENCE
Agriculture & Natural Resources
Business
Criminal Justice
Early Childhood Education
Education

ASU-Newport

ASSOCIATE OF APPLIED SCIENCE
Agriculture Technology
Automotive Service Technology
Business Technology
Collision Repair Technology
Computer Networking Technology
Crime Scene Investigation
Energy Control Technology
General Technology
Law Enforcement Administration
Nursing

ASSOCIATE OF ARTS
Liberal Arts

ASSOCIATE OF ARTS IN TEACHING
Teaching

ASSOCIATE OF GENERAL STUDIES
General Studies

ASSOCIATE OF SCIENCE
Business
Criminal Justice
Education
Liberal Arts & Science
Natural Sciences

ASU Mid-South

ASSOCIATE OF APPLIED SCIENCE
Aviation Maintenance Technology
Business Technologies
Digital Media
General Technology
Hospitality Management
Information Systems Technology
Medical Assistant
Respiratory Care

ASSOCIATE OF ARTS
General Education

ASSOCIATE OF SCIENCE
Business
Education
Hospitality Management

Degrees & Certificates Awarded Summary

By Fiscal Year

Degrees & Certificates Awarded - Jonesboro Campus										
	Fiscal Years					Percentage of Total by Attribute				
	2013	2014	2015	2016	2017	2013	2014	2015	2016	2017
Total Degrees/Certificates Awarded	3,992	3,780	3,778	3,987	4,435					
Certificate of Proficiency	0	0	0	0	1	0.0%	0.0%	0.0%	0.0%	<0.1%
Associate	521	392	382	512	554	13.1%	10.4%	10.1%	12.8%	12.5%
Bachelor's	1,721	1,824	1,766	1,713	1,782	43.1%	48.3%	46.7%	43.0%	40.2%
Graduate Certificate	11	12	15	23	30	0.3%	0.3%	0.4%	0.6%	0.7%
Master's	1,600	1,316	1,251	1,358	1,591	40.1%	34.8%	33.1%	34.1%	35.9%
Specialist	89	191	321	330	414	2.2%	5.1%	8.5%	8.3%	9.3%
Doctoral	50	45	43	51	63	1.3%	1.2%	1.1%	1.3%	1.4%

HISTORICAL DEGREES & CERTIFICATES AWARDED

Campuses	Fiscal Years				
	2013	2014	2015	2016	2017
Certificates Awarded by Campus					
Jonesboro	11	12	15	23	31
Beebe	830	945	1,015	1,021	936
Mtn. Home	303	334	324	330	420
Newport	541	359	432	569	631
Mid-South	--	--	151	436	413
Total Certificates	1,685	1,650	1,937	2,379	2,431
Degrees Awarded by Campus					
Jonesboro	3,981	3,768	3,763	3,964	4,404
Beebe	625	659	672	767	674
Mtn. Home	268	249	272	241	243
Newport	189	178	199	238	238
Mid-South	--	--	130	127	143
Total Degrees	5,063	4,854	5,036	5,337	5,702
Total Awards	6,748	6,504	6,973	7,716	8,133

DEGREES AWARDED BY ETHNICITY

Jonesboro Campus - Fiscal Year 2017

Ethnicity	Degrees					Total Degrees
	Associate	Bachelor's	Master's	Specialist	Doctoral	
African American	88	220	163	70	5	546
American Indian	2	3	11	1	0	17
Asian American	2	15	11	2	2	32
Hispanic American	8	35	35	6	2	86
Hawaiian/Pacific Islander	1	1	0	0	0	2
Two or More Races	12	28	21	4	2	67
White American	432	1,384	1,200	323	46	3,385
Ethnicity Unknown	5	15	22	8	1	51
International	4	81	128	0	5	218

Data Sources: ADHE Degrees and Certificates Awarded by Arkansas Higher Education Institutions
 Information Source: The Office of Institutional Effectiveness: web address: www.AState.edu/irp; email address: asuirp@AState.edu

Degrees Awarded by College & Department

Jonesboro Campus - Fiscal Year 2017

College/Department/Program	Degrees/Certificates		
	Undergraduate	Graduate	Total
COLLEGE OF AGRICULTURE, ENGINEERING & TECHNOLOGY			
Agriculture	99	23	122
Engineering	67	44	111
Technology	11	0	11
Total Agri., Engineering & Tech. Degrees.....	177	67	244
COLLEGE OF BUSINESS			
Accounting	46	9	55
Computer & Information Technology	38	0	38
Economics & Finance	139	58	197
Management & Marketing	103	0	103
Total Business Degrees	326	67	393
COLLEGE OF EDUCATION & BEHAVIORAL SCIENCE			
Health, Physical Education & Sport Sciences.....	132	42	174
Psychology & Counseling	63	41	104
School of Teacher Education & Leadership	109	1,430	1,539
Total Education & Behavioral Science Degrees.....	304	1,513	1,817
COLLEGE OF LIBERAL ARTS & COMMUNICATIONS			
Art & Design	24	0	24
Communication	39	4	43
Criminology, Sociology & Geography.....	100	5	105
English & Philosophy	36	11	47
History	23	7	30
Media	33	10	43
Music.....	19	2	21
Political Science	8	111	119
Theatre.....	6	0	6
World Languages & Cultures	8	0	8
Heritage Studies Program.....	0	9	9
Total Liberal Arts & Comm. Degrees	296	159	455

College/Department/Program	Degrees/Certificates		
	Undergraduate	Graduate	Total
COLLEGE OF NURSING & HEALTH PROFESSIONS			
Clinical Laboratory Sciences.....	12	0	12
Communication Disorders.....	34	25	59
Medical Imaging & Radiation Sciences.....	26	0	26
Physical Therapy.....	31	28	59
School of Nursing.....	278	108	386
Social Work	48	38	86
Coordinated Program in Dietetics	8	0	8
Disaster Preparedness Program.....	7	15	22
Occupational Therapy Program	30	0	30
Total Nursing & Health Professions Degrees.....	474	214	688
COLLEGE OF SCIENCES & MATHEMATICS			
Biological Sciences	108	13	121
Chemistry & Physics	31	2	33
Computer Science.....	13	40	53
Mathematics & Statistics	20	11	31
Environmental Sciences Program.....	0	7	7
Molecular Biosciences Program.....	0	5	5
Total Sciences & Mathematics Degrees.....	172	78	250
UNDERGRADUATE STUDIES	588	0	588
TOTAL DEGREES/CERTIFICATES AWARDED	2,337	2,098	4,435

Degrees Awarded by Undergraduate Program

Jonesboro Campus - Fiscal Year 2017

Associate Degree Programs

COLLEGE OF AGRI., ENGINEERING & TECH.

AS Technology..... 1

COLLEGE OF BUSINESS

AS Computer & Information
Technology..... 11

COLLEGE OF NURSING & HEALTH PROFESSIONS

AASN Nursing 95

AAS Physical Therapist Assistant 31

AAS Occupational Therapy
Assistant 30

AAS Clinical Laboratory Science 3

AAS Disaster Preparedness
& Emergency Management 2

UNDERGRADUATE STUDIES

AS General Education 308

AA General Education 49

AGS General Studies 24

Bachelor's Degree Programs

COLLEGE OF AGRI., ENGINEERING & TECH.

BSA Agricultural Business 49

BSME Mechanical Engineering 29

BSCE Civil Engineering 20

BSA Animal Science 19

BSA Plant Science 19

BSEE Electrical Engineering 18

BS Technology 10

BSA Agricultural Studies 8

BAS Applied Science 4

COLLEGE OF BUSINESS

BS Business Administration 69

BS Finance 67

BS Management 54

BS Accounting 46

BS Marketing 31

BS Computer & Information Tech. ... 26

BS International Business 12

BS Global Supply Chain Mgmt. 6

BA Economics 3

BSE Business Technology Education .. 1

COLLEGE OF EDUCATION & BEHAVIORAL SCIENCE

BSE Elementary Education 73

BS Exercise Science 64

BS Psychology 63

BSE Middle Level Education 32

BSE Physical Education 28

BS Sport Management 24

BS Health Promotion 13

BSE Special Education K-12 4

BS Athletic Training 3

COLLEGE OF LIBERAL ARTS & COMM.

BA Criminology 74

BA Sociology 26

BA Communication Studies 22

BS Creative Media Production 20

BA English 17

BFA Graphic Design 17

BS Strategic Communications 17

BSE Social Science Education 13

BSE English Education 12

BA History 10

BS Multimedia Journalism 10

BME Instrumental Music Education 9

BA Political Science 8

BA Philosophy 7

BA Theatre 6

BFA Art 6

BME Vocal Music Education 5

BA World Languages & Cultures 4

BSE World Languages & Cultures 4

BA Music 3

BS Radio-Television 3

BM Music Performance 2

BA Art 1

COLLEGE OF NURSING & HEALTH PROFESSIONS

BSN Nursing 161

BSW Social Work 48

BS Communication Disorders 34

BSRS Radiologic Sciences 26

BS Health Studies 22

BS Clinical Laboratory Science 9

BS Dietetics 8

BS Disaster Preparedness
& Emergency Management 4

COLLEGE OF SCIENCES & MATHEMATICS

BS Biological Sciences 86

BA Chemistry 23

BS Wildlife Fisheries &
Conservation 18

BS Mathematics 13

BA Computer Science 7

BSE Mathematics Education 7

BS Computer Science 6

BS Chemistry 5

BSE Biology Education 4

BS Physics 2

BS Forensic Science 1

UNDERGRADUATE STUDIES

BS Interdisciplinary Studies 112

BGS General Studies 95

**TOTAL UNDERGRADUATE
DEGREES AWARDED 2,336**

Top Five Bachelor's Degree Programs by Number of Degrees Awarded

BSN Nursing	161
BS Interdisciplinary Studies	112
BGS General Studies	95
BS Biological Sciences	86
BA Criminology	74

Degrees Awarded by Graduate Program

Jonesboro Campus - Fiscal Year 2017

Graduate Certificates

COLLEGE OF EDUCATION & BEHAVIORAL SCIENCE

GCert	Special Education Teacher	6
GCert	Building Level Administration	5
GCert	Clinical Mental Health Counseling	1
GCert	Special Education Director	1

COLLEGE OF NURSING & HEALTH PROFESSIONS

GCert	Addiction Studies	12
GCert	Health Sciences Education	4
GCert	Health Care Management	1

Master's Degree Programs

COLLEGE OF AGRICULTURE, ENGINEERING & TECH.

MEM	Engineering Management	36
MSA	Agriculture	23
MSEN	Engineering	8

COLLEGE OF BUSINESS

MBA	Business Administration	58
MACC	Accounting	9

COLLEGE OF EDUCATION & BEHAVIORAL SCIENCE

MSE	Educational Leadership	376
MSE	Educational Theory & Practice	272
MSE	Special Ed., Gifted, Talented & Creative	123
MSE	Curriculum & Instruction	83
MSE	Special Education K-12	64
MSE	Special Ed., Instructional Specialist, 4-12	39
MS	Sports Administration	35
MSE	Special Ed., Instructional Specialist, P-4	30
MS	College Student Personnel Services	17
MAT	Teaching	13
MS	Exercise Science	7
MSE	School Counseling	6
MRC	Rehabilitation Counseling	4

COLLEGE OF EDUCATION & BEHAVIORAL SCIENCE-CONT.

MS	Early Childhood Services	4
MSE	Early Childhood Education	2
MSE	Reading Education	1

COLLEGE OF LIBERAL ARTS & COMMUNICATION

MPA	Public Administration	109
MA	English	8
MA	History	7
MSMC	Journalism	5
MSMC	Radio-Television	5
MA	Communication Studies	4
MA	Heritage Studies	4
MA	Sociology	3
MSE	English Education	3
MA	Criminal Justice	2
MA	Political Science	2
MM	Music Performance	1
MME	Music Education	1

COLLEGE OF NURSING & HEALTH PROFESSIONS

MSW	Social Work	38
MSN	Nurse Anesthesia	36
MSN	Nursing	35
MCD	Communication Disorders	25
MS	Disaster Preparedness	15
MS	Health Sciences	9

COLLEGE OF SCIENCES & MATHEMATICS

MS	Computer Science	40
MS	Biology	10
MS	Mathematics	9
MA	Biological Sciences	2
MS	Chemistry	2
MS	Environmental Science	2
MSE	Mathematics Education	2
MSE	Biology Education	1
MS	Molecular Biosciences	1

Specialist Degree Programs

COLLEGE OF EDUCATION & BEHAVIORAL SCIENCE

EDS	Educational Leadership	399
EDS	Psychology & Counseling	13
SCCT	Community College Admin. Edu.	2

Doctoral Degree Programs

COLLEGE OF EDUCATION & BEHAVIORAL SCIENCE

EDD	Educational Leadership	10
-----	------------------------	----

COLLEGE OF LIBERAL ARTS & COMMUNICATION

PHD	Heritage Studies	5
-----	------------------	---

COLLEGE OF NURSING & HEALTH PROFESSIONS

DPT	Physical Therapy	28
DNP	Nursing Practice	11

COLLEGE OF SCIENCES & MATHEMATICS

PHD	Environmental Science	5
PHD	Molecular Biosciences	4

TOTAL GRADUATE DEGREES AWARDED 2,098

Top Five Graduate Degree Programs by Number of Degrees Awarded

EDS	Educational Leadership	399
MSE	Educational Leadership	376
MSE	Educational Theory & Practice	272
MSE	Special Ed.; Gifted, Talented & Creative	123
MPA	Public Administration	109



Students

System Enrollment Summary

Jonesboro, Beebe*, Mtn. Home, Newport* & Mid-South - Fall 2017

Campus Student Enrollment

	Campuses						Percentage of Total by Attribute				
	A-State	ASUB	ASUMH	ASUN	ASUMS	Total	A-State	ASUB	ASUMH	ASUN	ASUMS
Total Headcount	13,930	3,738	1,441	2,512	1,561	23,182	60.1%	16.1%	6.2%	10.8%	6.7%
Full-Time**	7,597	1,868	644	1,095	437	11,641	65.3%	16.0%	5.5%	9.4%	3.8%
Part-Time	6,333	1,870	797	1,417	1,124	11,541	54.9%	16.2%	6.9%	12.3%	9.7%
Full-Time Equivalent (FTE)	9,772	2,477	905	1,607	841	15,602	62.6%	15.9%	5.8%	10.3%	5.4%
Semester Credit Hours	141,105	37,161	13,572	24,098	12,611	228,547	61.7%	16.3%	5.9%	10.5%	5.5%
Degrees/Certificates Awarded***	4,435	1,610	663	869	556	8,133	54.5%	19.8%	8.2%	10.7%	6.8%

Campus Student Demographics

	Campuses						Percentage of Total by Attribute				
	A-State	ASUB	ASUMH	ASUN	ASUMS	Total	A-State	ASUB	ASUMH	ASUN	ASUMS
Headcount by Age											
Under 25	8,470	2,886	966	1,774	1,198	15,294	55.4%	18.9%	6.3%	11.6%	7.8%
25 & Older	5,460	852	475	738	363	7,888	69.2%	10.8%	6.0%	9.4%	4.6%
Headcount by Gender											
Male	5,337	1,519	603	1,074	627	9,160	58.3%	16.6%	6.6%	11.7%	6.8%
Female	8,593	2,219	838	1,438	934	14,022	61.3%	15.8%	6.0%	10.3%	6.7%
Headcount by Ethnicity+											
African American	1,831	230	8	388	888	3,345	54.7%	6.9%	0.2%	11.6%	26.5%
White American	10,381	2,974	1,135	1,873	506	16,869	61.5%	17.6%	6.7%	11.1%	3.0%
Other Ethnicity	1,718	534	298	251	167	2,968	57.9%	18.0%	10.0%	8.5%	5.6%

*NOTE: Beebe's enrollment includes Heber Springs and Searcy. Newport's enrollment includes the Commercial Driving Technical Certificate Program, the ASU Technical Center at Marked Tree and the Jonesboro Technical Center.

**NOTE: A "full-time" undergraduate student load is 12 or more semester credits, and a "full-time" graduate student load is 9 or more semester credits.

***NOTE: Degrees/Certificates Awarded represents degrees conferred during fiscal year 2016-2017.

**NOTE: "Other" includes students reported as American Indian/Alaskan Native, Asian American, Hispanic American, Native Hawaiian/Pacific Islander, those reporting two or more races, International and those whose ethnicity is unknown.

Data Sources: Institutional Research Office, Arkansas State University-Beebe; Registrar's Office, Arkansas State University-Mountain Home; Arkansas State University-Newport and Arkansas State University Mid-South.

Information Source: The Office of Institutional Effectiveness; web address: www.AState.edu/irp; email address: asuip@AState.edu

Total Enrollment

Jonesboro Campus - Fall 2013 to Fall 2017

Total Enrollment										
	Fall Semesters					Percentage of Total Enrollment				
	2013	2014	2015	2016	2017	2013	2014	2015	2016	2017
Total Headcount	13,552	13,144	13,410	14,085	13,930					
Undergraduate	10,098	9,857	9,592	9,839	9,604	74.5%	75.0%	71.5%	69.9%	68.9%
Graduate	3,454	3,287	3,818	4,246	4,326	25.5%	25.0%	28.5%	30.1%	31.1%
Headcount by Load										
Full-Time*	8,384	8,126	8,031	8,061	7,597	61.9%	61.8%	59.9%	57.2%	54.5%
Part-Time	5,168	5,018	5,379	6,024	6,333	38.1%	38.2%	40.1%	42.8%	45.5%
Full-Time Equivalent (FTE)	10,017	9,822	9,857	10,107	9,772					
Student Demographics										
	Fall Semesters					Percentage of Total Enrollment				
	2013	2014	2015	2016	2017	2013	2014	2015	2016	2017
Headcount by Age										
Under 25	8,351	8,315	8,376	8,627	8,470	61.6%	63.3%	62.5%	61.2%	60.8%
25 & Older	5,201	4,829	5,034	5,458	5,460	38.4%	36.7%	37.5%	38.8%	39.2%
Headcount by Gender										
Male	5,386	5,347	5,446	5,625	5,337	39.7%	40.7%	40.6%	39.9%	38.3%
Female	8,166	7,797	7,964	8,460	8,593	60.3%	59.3%	59.4%	60.1%	61.7%
Headcount by Ethnicity										
African American	1,923	1,834	1,788	1,836	1,831	14.2%	14.0%	13.3%	13.0%	13.1%
American Indian/Alaskan Native	57	71	54	59	54	0.4%	0.5%	0.4%	0.4%	0.4%
Asian American	97	102	111	116	118	0.7%	0.8%	0.8%	0.8%	0.8%
Hispanic American	267	293	324	350	358	2.0%	2.2%	2.4%	2.5%	2.6%
Native Hawaiian/Pacific Islander	10	16	12	10	7	0.1%	0.1%	0.1%	0.1%	0.1%
Two or More Races	211	209	242	249	269	1.6%	1.6%	1.8%	1.8%	1.9%
White American	9,995	9,744	9,996	10,448	10,381	73.8%	74.1%	74.5%	74.2%	74.5%
Ethnicity Unknown	185	129	123	166	198	1.4%	1.0%	0.9%	1.2%	1.4%
International	807	746	760	851	714	6.0%	5.7%	5.7%	6.0%	5.1%

*NOTE: A "full-time" undergraduate student load is 12 or more semester credits, and a "full-time" graduate student load is 9 or more semester credits.
 Data Source: Student Enrollment Information
 Information Source: The Office of Institutional Effectiveness web address: www.AState.edu/irp; email address: asuip@AState.edu

Total Enrollment

Beebe Campus - Fall 2013 to Fall 2017

Total Enrollment										
	Fall Semesters					Percentage of Total Enrollment				
	2013	2014	2015	2016	2017	2013	2014	2015	2016	2017
Total Headcount	4,380	4,140	3,935	3,989	3,738					
Full-Time*	2,220	2,131	2,071	2,082	1,868	50.7%	51.5%	52.6%	52.2%	50.0%
Part-Time	2,160	2,009	1,864	1,907	1,870	49.3%	48.5%	47.4%	47.8%	50.0%
Full-Time Equivalent (FTE)	2,886	2,770	2,680	2,678	2,477					
Student Demographics										
	Fall Semesters					Percentage of Total Enrollment				
	2013	2014	2015	2016	2017	2013	2014	2015	2016	2017
Headcount by Age Categories										
Under 18	956	925	861	937	898	21.8%	22.3%	21.9%	23.5%	24.0%
18 to 19	1,256	1,289	1,264	1,210	1,170	28.7%	31.1%	32.1%	30.3%	31.3%
20 to 21	612	558	526	533	492	14.0%	13.5%	13.4%	13.4%	13.2%
22 to 24	411	414	365	362	326	9.4%	10.0%	9.3%	9.1%	8.7%
25 to 29	396	314	336	352	331	9.0%	7.6%	8.5%	8.8%	8.9%
30 to 44	552	467	397	413	360	12.6%	11.3%	10.1%	10.4%	9.6%
45 to 64	169	150	161	152	130	3.9%	3.6%	4.1%	3.8%	3.5%
65 & Over	28	23	25	30	31	0.6%	0.6%	0.6%	0.8%	0.8%
Age Unknown	0	0	0	0	0	0.0%	0.0%	0.0%	0.0%	0.0%
Headcount by Gender										
Male	1,874	1,802	1,771	1,721	1,519	42.8%	43.5%	45.0%	43.1%	40.6%
Female	2,506	2,338	2,164	2,268	2,219	57.2%	56.5%	55.0%	56.9%	59.4%
Headcount by Ethnicity**										
African American	198	201	242	243	230	4.5%	4.9%	6.1%	6.1%	6.2%
White American	3,713	3,470	3,260	3,280	2,974	84.8%	83.8%	82.8%	82.2%	79.6%
Other Ethnicity	469	469	433	466	534	10.7%	11.3%	11.0%	11.7%	14.3%

*NOTE: A "full-time" undergraduate student load is 12 or more semester credits.

**NOTE: "Other" includes students reported as American Indian/Alaskan Native, Asian American, Hispanic American, Hawaiian Native/Pacific Islander, those reporting two or more races, International and those whose ethnicity is unknown.

Data Sources: Beebe Student Enrollment; Institutional Research Office, Arkansas State University-Beebe

Information Source: The Office of Institutional Effectiveness; web address: www.AState.edu/irp; email address: asuip@AState.edu

Total Enrollment

Mountain Home Campus - Fall 2013 to Fall 2017

Total Enrollment										
	Fall Semesters					Percentage of Total Enrollment				
	2013	2014	2015	2016	2017	2013	2014	2015	2016	2017
Total Headcount	1,446	1,393	1,384	1,367	1,441					
Full-Time*	911	817	740	714	644	63.0%	58.7%	53.5%	52.2%	44.7%
Part-Time	535	576	644	653	797	37.0%	41.3%	46.5%	47.8%	55.3%
Full-Time Equivalent (FTE)	1,104	985	960	953	905					

Student Demographics										
	Fall Semesters					Percentage of Total Enrollment				
	2013	2014	2015	2016	2017	2013	2014	2015	2016	2017
Headcount by Age Categories										
Under 18	186	122	199	174	379	12.9%	8.8%	14.4%	12.7%	26.3%
18 to 19	156	346	330	342	333	10.8%	24.8%	23.8%	25.0%	23.1%
20 to 21	191	141	138	131	137	13.2%	10.1%	10.0%	9.6%	9.5%
22 to 24	188	145	115	133	117	13.0%	10.4%	8.3%	9.7%	8.1%
25 to 29	211	191	174	175	166	14.6%	13.7%	12.6%	12.8%	11.5%
30 to 44	361	295	280	263	202	25.0%	21.2%	20.2%	19.2%	14.0%
45 to 64	137	141	136	138	101	9.5%	10.1%	9.8%	10.1%	7.0%
65 & Over	16	12	12	11	6	1.1%	0.9%	0.9%	0.8%	0.4%
Age Unknown	0	0	0	0	0	0.0%	0.0%	0.0%	0.0%	0.0%
Headcount by Gender										
Male	549	529	517	577	603	38.0%	38.0%	37.4%	42.2%	41.8%
Female	897	864	867	790	838	62.0%	62.0%	62.6%	57.8%	58.2%
Headcount by Ethnicity**										
African American	11	9	8	10	8	0.8%	0.6%	0.6%	0.7%	0.6%
White American	1,357	1,248	1,239	1,245	1,135	93.8%	89.6%	89.5%	91.1%	78.8%
Other Ethnicity	78	136	137	112	298	5.4%	9.8%	9.9%	8.2%	20.7%

*NOTE: A "full-time" undergraduate student load is 12 or more semester credits.

**NOTE: "Other" includes students reported as American Indian/Alaskan Native, Asian American, Hispanic American, Hawaiian Native/Pacific Islander, those reporting two or more races, International and those whose ethnicity is unknown.

Data Sources: Mountain Home Student Enrollment; Registrar's Office, Arkansas State University-Mountain Home

Information Source: The Office of Institutional Effectiveness: web address: www.AState.edu/irp; email address: asuirp@AState.edu

Total Enrollment

Newport Campus - Fall 2013 to Fall 2017

Total Enrollment										
	Fall Semesters					Percentage of Total Enrollment				
	2013	2014	2015	2016	2017	2013	2014	2015	2016	2017
Total Headcount	2,039	2,481	2,652	2,718	2,512					
Full-Time*	955	1,000	1,032	1,057	1,095	46.8%	40.3%	38.9%	38.9%	43.6%
Part-Time	1,084	1,481	1,620	1,661	1,417	53.2%	59.7%	61.1%	61.1%	56.4%
Full-Time Equivalent (FTE)	1,265	1,376	1,482	1,568	1,607					

Student Demographics										
	Fall Semesters					Percentage of Total Enrollment				
	2013	2014	2015	2016	2017	2013	2014	2015	2016	2017
Headcount by Age Categories										
Under 18	463	761	828	831	586	22.7%	30.7%	31.2%	30.6%	23.3%
18 to 19	451	565	588	769	565	22.1%	22.8%	22.2%	28.3%	22.5%
20 to 21	269	267	305	376	371	13.2%	10.8%	11.5%	13.8%	14.8%
22 to 24	209	246	259	264	252	10.3%	9.9%	9.8%	9.7%	10.0%
25 to 29	204	215	226	250	255	10.0%	8.7%	8.5%	9.2%	10.2%
30 to 44	328	320	353	148	367	16.1%	12.9%	13.3%	5.4%	14.6%
45 to 64	110	97	86	76	110	5.4%	3.9%	3.2%	2.8%	4.4%
65 & Over	5	10	7	4	6	0.2%	0.4%	0.3%	0.1%	0.2%
Age Unknown	0	0	0	0	0	0.0%	0.0%	0.0%	0.0%	0.0%
Headcount by Gender										
Male	838	1,010	1,098	1,081	1,074	41.1%	40.7%	41.4%	39.8%	42.8%
Female	1,201	1,471	1,554	1,637	1,438	58.9%	59.3%	58.6%	60.2%	57.2%
Headcount by Ethnicity										
African American	259	386	451	417	388	12.7%	15.6%	17.0%	15.3%	15.4%
White American	1,523	1,812	1,873	1,964	1,873	74.7%	73.0%	70.6%	72.3%	74.6%
Other Ethnicity	257	283	328	337	251	12.6%	11.4%	12.4%	12.4%	10.0%

*NOTE: A "full-time" undergraduate student load is 12 or more semester credits.

**NOTE: "Other" includes students reported as American Indian/Alaskan Native, Asian American, Hispanic American, Hawaiian Native/Pacific Islander, those reporting two or more races, International and those whose ethnicity is unknown.

Data Sources: Newport Student Enrollment; Arkansas State University-Newport

Information Source: The Office of Institutional Effectiveness: web address: www.AState.edu/irp; email address: asuip@AState.edu

Total Enrollment

Mid-South Campus - Fall 2015 to Fall 2017

Total Enrollment						
	Fall Semesters			Percentage of Total Enrollment		
	2015	2016	2017	2015	2016	2017
Total Headcount	1,896	1,836	1,561			
Full-Time*	570	530	437	30.1%	28.9%	28.0%
Part-Time	1,326	1,306	1,124	69.9%	71.1%	72.0%
Full-Time Equivalent (FTE)	1,033	993	841			

Student Demographics						
	Fall Semesters			Percentage of Total Enrollment		
	2015	2016	2017	2015	2016	2017
Headcount by Age Categories						
Under 18	789	774	622	41.6%	42.2%	39.8%
18 to 19	325	328	288	17.1%	17.9%	18.4%
20 to 21	167	164	166	8.8%	8.9%	10.6%
22 to 24	139	114	122	7.3%	6.2%	7.8%
25 to 29	157	161	113	8.3%	8.8%	7.2%
30 to 44	244	226	189	12.9%	12.3%	12.1%
45 to 64	69	61	53	3.6%	3.3%	3.4%
65 & Over	6	8	8	0.3%	0.4%	0.5%
Age Unknown	0	0	0	0.0%	0.0%	0.0%
Headcount by Gender						
Male	747	763	627	39.4%	41.6%	40.2%
Female	1,149	1,073	934	60.6%	58.4%	59.8%
Headcount by Ethnicity**						
African American	1,072	1,040	888	56.5%	56.6%	56.9%
White American	671	623	506	35.4%	33.9%	32.4%
Other Ethnicity	153	173	150	8.1%	9.4%	10.7%

*NOTE: A "full-time" undergraduate student load is 12 or more semester credits.

**NOTE: "Other" includes students reported as American Indian/Alaskan Native, Asian American, Hispanic American, Hawaiian Native/Pacific Islander, those reporting two or more races, International and those whose ethnicity is unknown.

Data Sources: Mid-South Student Enrollment; Arkansas State University Mid-South

Information Source: The Office of Institutional Effectiveness; web address: www.AState.edu/irp; email address: asuip@AState.edu

Geographic Origin of Total Enrollment

Jonesboro Campus - Fall 2017

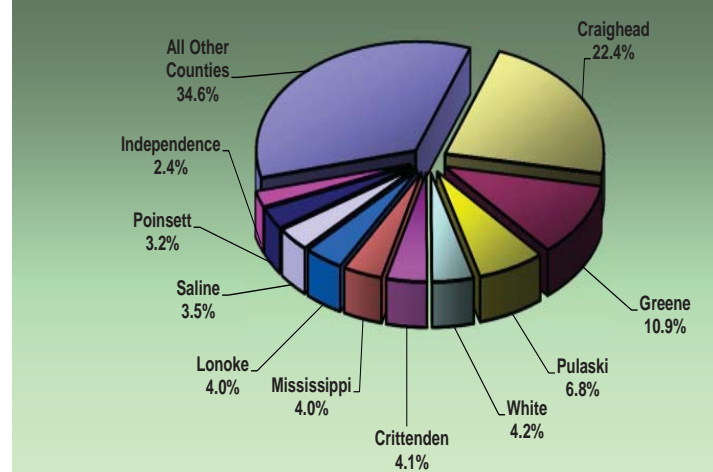
Arkansas Counties	
Arkansas+	70
Ashley	40
Baxter+	200
Benton	107
Boone	58
Bradley	14
Calhoun	8
Carroll	18
Chicot	5
Clark	17
Clay+*	234
Cleburne+	95
Cleveland	10
Columbia	16
Conway	27
Craighead+*	2,261
Crawford	42
Crittenden+*	417
Cross+*	193
Dallas	8
Desha	32
Drew	36
Faulkner	172
Franklin	7
Fulton+	71
Garland	143
Grant	36
Greene+*	1,105
Hempstead	13
Hot Spring	34
Howard	11
Independence+*	239
Izard+	69
Jackson+*	140
Jefferson	138
Johnson	9
Lafayette	0
Lawrence+*	176
Total	10,114

Other U.S. States/Territories	
Missouri	834
Mississippi	528
Tennessee	484
Texas	142
South Carolina	100
Florida	92
Louisiana	91
California	80
Illinois	73
Georgia	67
Alabama	63
Oklahoma	57
New Jersey	34
Michigan	33
Kansas	32
Ohio	31
Colorado	29
North Carolina	29
Virginia	24
Maryland	23
Pennsylvania	21
New York	20
Idaho	19
Utah	19
Connecticut	17
Arizona	15
Indiana	14
Nevada	14
Kentucky	12
New Mexico	12
Iowa	11
Washington	11
Wisconsin	10
Minnesota	8
Nebraska	7
Montana	5
Oregon	5
Alaska	4
Maine	4
North Dakota	4
Wyoming	4
Delaware	3
Massachusetts	3
New Hampshire	3
Rhode Island	2
South Dakota	2
West Virginia	2
Dist. of Columbia	1
Puerto Rico	1
Virgin Islands	1
Total	3,102

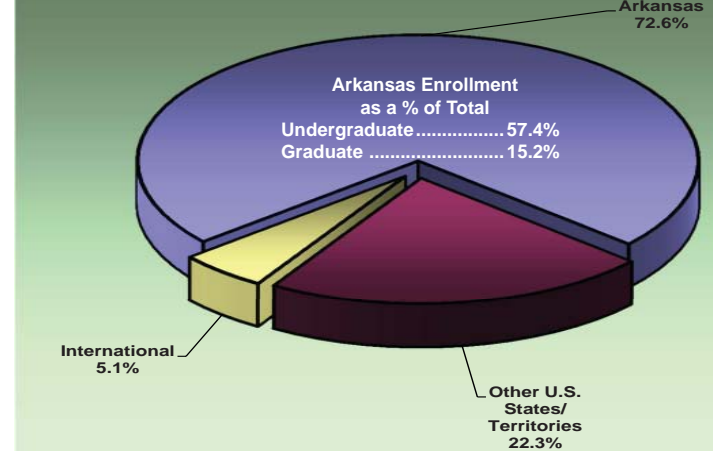
International	
Foreign Countries	714
Grand Total	13,930

+ These counties have been historically identified as being in A-State's "Draw Area". The Arkansas Department of Higher Education defines an institution's "Draw Area" as those counties in which at least 3% of the county's high school graduates from the most recent graduating class enrolled in that institution.

TOP ARKANSAS COUNTIES BY ENROLLMENT



ENROLLMENT BY GEOGRAPHIC ORIGIN

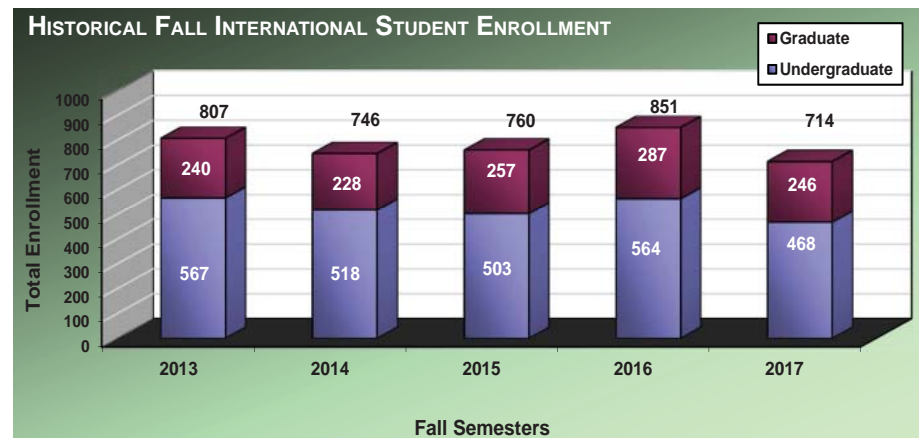
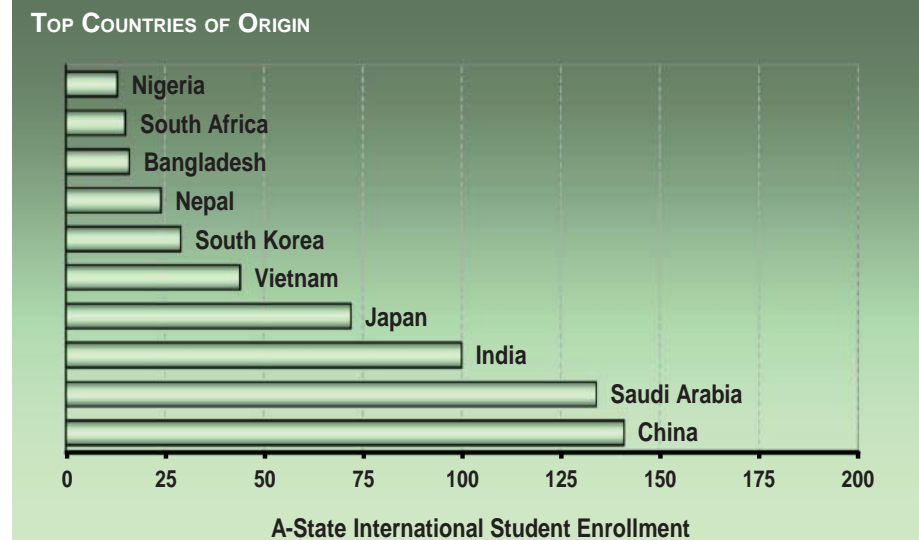


*NOTE: Counties that are within a 75 mile radius of A-State.
 Data Source: Student Enrollment Information
 Information Source: The Office of Institutional Effectiveness: web address: www.AState.edu/irp; email address: asuirp@AState.edu

Geographic Origin of International Students

Jonesboro Campus - Fall 2017

Country of Origin			
Undergraduate		Graduate	
Argentina	0	2	
Australia	3	0	
Austria	0	2	
Azerbaijan	1	0	
Bahamas	4	0	
Bahrain	0	1	
Bangladesh	2	14	
Belgium	1	0	
Bolivia	1	0	
Brazil	0	1	
Canada	6	1	
Chile	1	0	
China	108	33	
Columbia	1	0	
Costa Rica	0	2	
Croatia	1	0	
Czech Republic	2	0	
Denmark	1	1	
Egypt	4	0	
Finland	4	0	
France	4	1	
Germany	3	2	
Ghana	1	1	
Grenada	0	1	
Hondorus	1	0	
India	19	81	
Iran	0	1	
Ireland	0	1	
Israel	0	1	
Ivory Coast	1	0	
Japan	70	2	
Jordan	0	1	
Kazakhstan	1	0	
Kosovo	1	0	
Kuwait	5	0	
Latvia	1	0	
Lebanon	2	0	
Liberia	1	0	
Malaysia	2	1	
Mali	1	0	
Mexico	2	0	
Morocco	3	1	
Nepal	5	19	
Netherlands	2	0	
New Zealand	2	0	
Nigeria	4	9	
Oman	1	0	
Pakistan	3	3	
Palestinian Territory	3	0	
Russia	1	1	
Saudi Arabia	104	30	
Slovenia	1	0	
South Africa	12	3	
South Korea	26	3	
Spain	5	1	
Sri Lanka	1	2	
Sweden	1	0	
Syria	1	1	
Taiwan	2	1	
Tanzania	1	1	
Thailand	0	2	
Turkey	3	0	
United Kingdom	2	2	
Uzbekistan	0	1	
Vietnam	29	15	
Virgin Islands	1	0	
Yemen	0	1	
Total	468	246	



Data Source: Student Enrollment Information
 Information Source: The Office of Institutional Effectiveness: web address: www.AState.edu/irp; email address: asuirp@AState.edu

Enrollment & SCH by Legal Residence

Jonesboro Campus - Fall 2013 to Fall 2017

Total On- & Off-Campus Enrollment by Residency Status*										
	Fall Semesters					Percentage of Total Enrollment				
	2013	2014	2015	2016	2017	2013	2014	2015	2016	2017
Total Headcount Enrollment	13,552	13,144	13,410	14,085	13,930					
Undergraduate Full-Time										
Resident	6,422	6,287	6,138	6,026	5,614	47.4%	47.8%	45.8%	42.8%	40.3%
Nonresident	1,223	1,178	1,157	1,279	1,280	9.0%	9.0%	8.6%	9.1%	9.2%
Undergraduate Part-Time										
Resident	2,222	2,139	2,014	2,229	2,421	16.4%	16.3%	15.0%	15.8%	17.4%
Nonresident	231	253	283	305	289	1.7%	1.9%	2.1%	2.2%	2.1%
Graduate Full-Time										
Resident	401	356	415	428	402	3.0%	2.7%	3.1%	3.0%	2.9%
Nonresident	338	305	321	328	301	2.5%	2.3%	2.4%	2.3%	2.2%
Graduate Part-Time										
Resident	1,466	1,446	1,656	1,794	1,734	10.8%	11.0%	12.3%	12.7%	12.4%
Nonresident	1,249	1,180	1,426	1,696	1,889	9.2%	9.0%	10.6%	12.0%	13.6%

Total On- & Off-Campus Semester Credit Hours (SCH)										
	Fall Semesters					Percentage of Total SCH				
	2013	2014	2015	2016	2017	2013	2014	2015	2016	2017
Total SCH	145,563	142,804	142,784	146,065	141,105					
Undergraduate Full-Time										
Resident	93,183	91,391	90,031	88,578	82,933	64.0%	64.0%	63.1%	60.6%	58.8%
Nonresident	16,961	16,495	16,240	17,997	18,160	11.7%	11.6%	11.4%	12.3%	12.9%
Undergraduate Part-Time										
Resident	14,258	14,459	13,694	14,651	15,497	9.8%	10.1%	9.6%	10.0%	11.0%
Nonresident	1,870	2,049	2,242	2,303	2,163	1.3%	1.4%	1.6%	1.6%	1.5%
Graduate Full-Time										
Resident	4,561	4,229	5,094	5,273	4,879	3.1%	3.0%	3.6%	3.6%	3.5%
Nonresident	3,607	3,234	3,348	3,528	3,182	2.5%	2.3%	2.3%	2.4%	2.3%
Graduate Part-Time										
Resident	6,316	6,260	6,738	7,255	6,991	4.3%	4.4%	4.7%	5.0%	5.0%
Nonresident	4,807	4,687	5,397	6,480	7,300	3.3%	3.3%	3.8%	4.4%	5.2%

*NOTE: Student residency is established for tuition assessment. A student may qualify as an Arkansas resident if he or she maintains an independent permanent residence within Arkansas for a minimum of 6 months and makes formal application to the University to establish residency.

Data Source: Student Enrollment Information

Information Source: The Office of Institutional Effectiveness; web address: www.AState.edu/irp; email address: asuip@AState.edu

Enrollment by College & Department

Jonesboro Campus - Fall 2017

College/Department/Program	Enrollment		Total
	Undergraduate	Graduate	
COLLEGE OF AGRICULTURE, ENGINEERING & TECHNOLOGY			
Agriculture	412	43	455
Engineering	356	48	404
Technology	44	0	44
Total Agri., Engineering & Tech. Enrollment	812	91	903
COLLEGE OF BUSINESS			
Accounting	250	23	273
Computer & Information Technology	103	0	103
Economics & Finance	494	196	690
Management & Marketing	392	0	392
Total Business Enrollment	1,239	219	1,458
COLLEGE OF EDUCATION & BEHAVIORAL SCIENCE			
Health, Physical Education & Sport Sciences	463	210	673
Psychology & Counseling	274	138	412
School of Teacher Education & Leadership	450	2,561	3,011
Total Education & Behavioral Enrollment	1,187	2,909	4,096
COLLEGE OF LIBERAL ARTS & COMMUNICATION			
Art	153	0	153
Communication	232	26	258
Criminology, Sociology & Geography	370	19	389
English & Philosophy	150	26	176
History	111	18	129
Media	148	40	188
Music	129	11	140
Political Science	87	217	304
Theatre	52	0	52
World Languages & Cultures	16	0	16
Heritage Studies Program	0	40	40
Total Liberal Arts & Comm. Enrollment	1,448	397	1,845

College/Department/Program	Enrollment		Total
	Undergraduate	Graduate	
COLLEGE OF NURSING & HEALTH PROFESSIONS			
Clinical Laboratory Sciences	68	0	68
Communication Disorders	121	53	174
Medical Imaging & Radiation Sciences	242	0	242
Physical Therapy	72	81	153
School of Nursing	1,101	187	1,288
Social Work	177	75	252
Dietetics Program	37	0	37
Disaster Preparedness Program	58	34	92
Occupational Therapy Program	77	88	165
Total Nursing & Health Prof. Enrollment	1,953	518	2,471
COLLEGE OF SCIENCES & MATHEMATICS			
Biological Sciences	550	42	592
Chemistry & Physics	129	5	134
Computer Science	161	70	231
Mathematics & Statistics	77	12	89
Environmental Sciences Program	0	20	20
Molecular Biosciences Program	0	9	9
Total Sciences & Math. Enrollment	917	158	1,075
UNDERGRADUATE STUDIES	2,048	0	2,048
UNDECLARED GRADUATES	0	34	34
TOTAL ENROLLMENT	9,604	4,326	13,930

Data Source: Student Enrollment Information
 Information Source: The Office of Institutional Effectiveness: web address: www.AState.edu/irp; email address: asuirp@astate.edu

Undergraduate Enrollment by Degree Program

Jonesboro Campus - Fall 2017

Associate Degree Programs

COLLEGE OF BUSINESS

AS	Computer & Information Technology	5
----	-----------------------------------	---

COLLEGE OF LIBERAL ARTS & COMM.

AAS	Crime Scene Investigation	1
AAS	Law Enforcement	1

COLLEGE OF NURSING & HEALTH PROFESSIONS

AASN	Nursing	232
AAS	Occupational Therapy Assistant	77
AAS	Physical Therapist Assistant	72
AAS	Clinical Laboratory Science	9
AAS	Paramedic	5
AAS	Disaster Preparedness & Emergency Management	4

UNDERGRADUATE STUDIES

AGS	General Studies	19
-----	-----------------	----

Largest Degree Programs by Enrollment

BSN	Nursing	761
EDS	Educational Leadership	635
MSE	Educational Leadership	613
BS	Biological Sciences	477
BGS	General Studies	334

Bachelor's Degree Programs

COLLEGE OF AGRI. ENGINEERING & TECH.

BSA	Agricultural Business	168
BSME	Mechanical Engineering	163
BSCE	Civil Engineering	108
BSA	Animal Science	92
BSEE	Electrical Engineering	85
BSA	Plant Science	83
BSA	Agricultural Studies	53
BS	Technology	44
BAS	Applied Science	16

COLLEGE OF BUSINESS

BS	Business Administration	273
BS	Accounting	250
BS	Management	189
BS	Finance	177
BS	Marketing	124
BS	Computer & Info. Technology	94
BS	International Business	41
BS	Global Supply Chain Management	38
BA	Economics	27
BS	Business Economics	17
BSE	Business Technology Education	4

COLLEGE OF EDUCATION & BEHAVIORAL SCI.

BSE	Elementary Education	318
BS	Psychology	274
BS	Exercise Science	271
BSE	Middle Level Education	101
BSE	Physical Education	92
BS	Sport Management	80

BSE	Special Education, K-12	31
BS	Health Promotion	13
BS	Athletic Training	7

COLLEGE OF LIBERAL ARTS & COMM.

BA	Criminology	232
BA	Sociology	135
BS	Strategic Communications	119
BA	Communication Studies	113
BS	Creative Media Production	99
BFA	Graphic Design	93
BA	Political Science	87
BME	Instrumental Music Educ.	73
BSE	English Education	69
BA	English	68
BA	History	63
BFA	Art	56
BA	Theatre	52
BS	Multimedia Journalism	48
BSE	Social Science Education	48
BM	Music Performance	26
BA	Music	15
BME	Vocal Music Education	15
BA	Philosophy	13
BA	World Languages & Cultures	10
BSE	World Languages & Cultures Education	6
BA	Art	4
BA	Geography	1
BS	Journalism	1

COLLEGE OF NURSING & HEALTH PROFESSIONS

BSN	Nursing	761
BSRS	Radiologic Sciences	242
BSW	Social Work	177
BS	Communication Disorders	121

BS	Health Studies	108
BS	Clinical Laboratory Science	59
BS	Disaster Preparedness & Emergency Management	49
BS	Dietetics	37

COLLEGE OF SCIENCES & MATHEMATICS

BS	Biological Sciences	477
BS	Computer Science	125
BA	Chemistry	70
BS	Wildlife Fisheries & Conservation	44
BSE	Mathematics Education	41
BS	Chemistry	39
BA	Computer Science	36
BS	Mathematics	36
BS	Physics	16
BS	Biotechnology	14
BSE	Biology Education	8
BS	Environmental Science	7
BSE	Chemistry Education	4

UNDERGRADUATE STUDIES

NDS	Undeclared	1,585
BGS	General Studies	334
BS	Interdisciplinary Studies	110

TOTAL UNDERGRADUATES9,604

Graduate Enrollment by Degree Program

Jonesboro Campus - Fall 2017

Graduate Certificate Programs

COLLEGE OF EDUCATION & BEHAVIORAL SCIENCE

GCert	Building Level Admin.	14
GCert	Gifted, Talented & Creative Teacher	10
GCert	Special Education Teacher	9
GCert	Curriculum Director	2
GCert	Play Therapy	2
GCert	Special Education Director	1
GCert	History	1

COLLEGE OF LIBERAL ARTS & COMMUNICATION

GCert	History	1
-------	---------	---

Master's Degree Programs

COLLEGE OF AGRICULTURE, ENGINEERING & TECH.

MSA	Agriculture	43
MEM	Engineering Management	34
MSEngr	Engineering	14

COLLEGE OF BUSINESS

MBA	Business Administration	196
MACC	Accounting	23

COLLEGE OF EDUCATION & BEHAVIORAL SCIENCE

MSE	Educational Leadership	613
MSE	Special Ed., Instruc. Specialist (K-12)	314
MSE	Reading Education	262
MSE	Educational Theory & Practice	213
MS	Sport Administration	184
MSE	Special Ed., Gifted, Talented & Creative	182
MSE	Curriculum & Instruction	111
MS	Early Childhood Services	84
MS	College Student Personnel Services	76
MAT	Teaching	28
MS	Exercise Science	24

COLLEGE OF EDUCATION & BEHAVIORAL SCI. (CONT.)

MS	Psychological Science	7
MSE	Physical Education	2
MRC	Rehabilitation Counseling	1
MSE	Early Childhood Education	1
MSE	Special Ed., Instruc. Specialist (4-12)	1

COLLEGE OF LIBERAL ARTS & COMM.

MPA	Public Administration	210
MA	Communication Studies	26
MA	English	24
MS	Media Management	19
MA	History	14
MSMC	Journalism	11
MA	Criminal Justice	10
MSMC	Radio-Television	10
MA	Sociology	9
MM	Music Performance	9
MA	Political Science	7
MSE	Social Science Education	3
MME	Music Education	2
MSE	English Education	2

COLLEGE OF NURSING & HEALTH PROFESSIONS

MSN	Nursing	110
MSW	Social Work	75
MSN	Nurse Anesthesia	62
MCD	Communication Disorders	53
MS	Diasaster Preparedness & Emergency Management	34
MS	Health Sciences	9

COLLEGE OF SCIENCES & MATHEMATICS

MS	Computer Science	70
MS	Biology	30
MA	Biological Sciences	8
MS	Mathematics	8
MS	Environmental Science	7

COLLEGE OF SCIENCES & MATHEMATICS (CONT.)

MS	Chemistry	5
MSE	Mathematics Education	4
MS	Molecular Biosciences	3
MSE	Biology Education	3
PSM	Biotechnology	1

Specialist Degree Programs

COLLEGE OF EDUCATION & BEHAVIORAL SCIENCE

EDS	Educational Leadership	635
EDS	Psychology & Counseling	52
SCCT	Community College Admin. Ed.	11
EDS	Reading Education	1

Doctoral Degree Programs

COLLEGE OF EDUCATION & BEHAVIORAL SCIENCE

EDD	Educational Leadership	58
-----	------------------------	----

COLLEGE OF LIBERAL ARTS & COMMUNICATION

PHD	Heritage Studies	40
-----	------------------	----

COLLEGE OF NURSING & HEALTH PROFESSIONS

DOT	Occupational Therapy	88
DPT	Physical Therapy	61
DNP	Nursing Practice	6

COLLEGE OF SCIENCES & MATHEMATICS

PHD	Environmental Science	13
PHD	Molecular Biosciences	6

UNDECLARED GRADUATES

NDS	Undeclared/Certification	45
-----	--------------------------	----

TOTAL GRADUATES 4,326

Enrollment - by College & Career

Jonesboro Campus - Fall 2013 to Fall 2017

	Total Enrollment									
	Fall Semesters					Percentage of Total Enrollment				
	2013	2014	2015	2016	2017	2013	2014	2015	2016	2017
Agric., Engineering & Tech. Headcount	804	896	974	1,020	903	5.9%	6.8%	7.3%	7.2%	6.5%
Undergraduate	767	827	879	909	812	5.7%	6.3%	6.6%	6.5%	5.8%
Graduate	37	69	95	111	91	0.3%	0.5%	0.7%	0.8%	0.7%
Business Headcount	1,575	1,577	1,539	1,497	1,458	11.6%	12.0%	11.5%	10.6%	10.5%
Undergraduate	1,343	1,378	1,352	1,317	1,239	9.9%	10.5%	10.1%	9.4%	8.9%
Graduate	232	199	187	180	219	1.7%	1.5%	1.4%	1.3%	1.6%
Education & Behavioral Sci. Headcount	3,844	3,525	3,813	4,040	4,096	28.4%	26.8%	28.4%	28.7%	29.4%
Undergraduate	1,655	1,496	1,356	1,239	1,187	12.2%	11.4%	10.1%	8.8%	8.5%
Graduate	2,189	2,029	2,457	2,801	2,909	16.2%	15.4%	18.3%	19.9%	20.9%
Liberal Arts & Comm. Headcount	1,798	1,771	1,693	1,875	1,845	13.3%	13.5%	12.6%	13.3%	13.2%
Undergraduate	1,436	1,404	1,327	1,470	1,448	10.6%	10.7%	9.9%	10.4%	10.4%
Graduate	362	367	366	405	397	2.7%	2.8%	2.7%	2.9%	2.8%
Nursing & Health Prof. Headcount	2,075	2,100	2,229	2,310	2,471	15.3%	16.0%	16.6%	16.4%	17.7%
Undergraduate	1,632	1,656	1,741	1,789	1,953	12.0%	12.6%	13.0%	12.7%	14.0%
Graduate	443	444	488	521	518	3.3%	3.4%	3.6%	3.7%	3.7%
Sciences & Mathematics Headcount	1,052	1,060	1,101	1,184	1,075	7.8%	8.1%	8.2%	8.4%	7.7%
Undergraduate	915	916	912	986	917	6.8%	7.0%	6.8%	7.0%	6.6%
Graduate	137	144	189	198	158	1.0%	1.1%	1.4%	1.4%	1.1%
Total Headcount	13,552	13,144	13,410	14,085	13,930					

Data Source: Student Enrollment Information
 Information Source: The Office of Institutional Effectiveness: web address: www.AState.edu/irp; email address: asuipr@AState.edu

Semester Credit Hour Production - by College & Career

Jonesboro Campus - Fiscal Year 2013-2014 to Fiscal Year 2016-2017

Total Semester Credit Hours (SCH)										
	Fiscal Years					Percentage* of Total SCH				
	2012/13	2013/14	2014/15	2015/16	2016/17	2012/13	2013/14	2014/15	2015/16	2016/17
Agriculture, Engineering & Tech. SCH	12,048	13,051	14,905	16,251	16,623	3.4%	3.8%	4.3%	4.6%	4.6%
Undergraduate	11,399	12,351	13,639	14,722	15,188	3.2%	3.6%	4.0%	4.2%	4.2%
Graduate	649	700	1,266	1,529	1,435	0.2%	0.2%	0.4%	0.4%	0.4%
Business SCH	33,430	34,720	35,299	35,903	35,043	9.5%	10.0%	10.3%	10.2%	9.6%
Undergraduate	30,165	31,004	32,186	32,510	31,705	8.6%	8.9%	9.4%	9.2%	8.7%
Graduate	3,265	3,716	3,113	3,393	3,338	0.9%	1.1%	0.9%	1.0%	0.9%
Education & Behavioral Sci. SCH	98,589	96,788	93,472	97,192	101,566	28.0%	27.9%	27.2%	27.6%	27.9%
Undergraduate	47,289	48,001	44,237	38,941	35,692	13.4%	13.8%	12.9%	11.1%	9.8%
Graduate	51,300	48,787	49,235	58,251	65,874	14.6%	14.0%	14.4%	16.6%	18.1%
Liberal Arts & Communication SCH	101,566	96,270	90,205	88,753	92,876	28.8%	27.7%	26.3%	25.2%	25.5%
Undergraduate	95,986	90,264	83,855	82,190	85,179	27.2%	26.0%	24.4%	23.4%	23.4%
Graduate	5,580	6,006	6,350	6,563	7,697	1.6%	1.7%	1.9%	1.9%	2.1%
Nursing & Health Professions SCH	44,574	44,123	46,140	49,424	54,106	12.6%	12.7%	13.4%	14.1%	14.9%
Undergraduate	32,181	32,287	33,974	36,113	39,757	9.1%	9.3%	9.9%	10.3%	10.9%
Graduate	12,393	11,836	12,166	13,311	14,349	3.5%	3.4%	3.5%	3.8%	3.9%
Sciences & Mathematics SCH	52,457	52,733	53,385	53,675	51,711	14.9%	15.2%	15.6%	15.3%	14.2%
Undergraduate	49,986	50,517	50,762	50,300	48,609	14.2%	14.5%	14.8%	14.3%	13.4%
Graduate	2,471	2,216	2,623	3,375	3,102	0.7%	0.6%	0.8%	1.0%	0.9%
Total SCH	352,429	347,336	343,087	351,771	363,884					

*Note: There may be rounding in percentages.

Data Source: Student Enrollment Information

Information Source: The Office of Institutional Effectiveness: web address: www.AState.edu/irp; email address: asuipr@AState.edu

Full-Time Equivalent Enrollment (FTE)

Jonesboro Campus - Fiscal Year 2016-2017

College/Department/Program	FTE Enrollment		
	Undergraduate	Graduate	Total
COLLEGE OF AGRICULTURE, ENGINEERING & TECHNOLOGY			
Agriculture	254.9	31.0	285.9
Engineering	195.3	28.8	224.2
Technology	56.0	0.0	56.0
Total Agri., Engineering & Tech. FTE	506.3	59.8	566.1
COLLEGE OF BUSINESS			
Accounting	190.8	30.7	221.5
Computer & Information Technology	174.0	23.9	198.0
Economics & Finance	343.3	31.1	374.4
Management & Marketing	348.7	53.4	402.1
Total Business FTE	1,056.8	139.1	1,195.9
COLLEGE OF EDUCATION & BEHAVIORAL SCIENCE			
Health, Physical Education & Sport Sci	542.1	141.5	683.6
Psychology & Counseling	317.6	53.5	371.1
School of Teacher Education & Leadership	330.0	2,549.7	2,879.7
Total Education FTE	1,189.7	2,744.8	3,934.5
COLLEGE OF LIBERAL ARTS & COMMUNICATION			
Art & Design	206.1	0.0	206.1
Communication	294.8	7.3	302.1
Criminology, Sociology & Geography	584.7	11.1	595.8
English & Philosophy	659.3	15.2	674.5
History	326.5	11.5	338.0
Media	148.4	26.3	174.7
Music	209.3	7.0	216.3
Political Science	179.3	222.8	402.1
Theatre	84.6	0.0	84.6
World Languages & Cultures	146.3	0.0	146.3
Heritage Studies Program	0.0	19.7	19.7
Total Liberal Arts & Comm. FTE	2,839.3	320.7	3,160.0

College/Department/Program	FTE Enrollment		
	Undergraduate	Graduate	Total
COLLEGE OF NURSING & HEALTH PROFESSIONS			
Clinical Laboratory Sciences	42.9	0.0	42.9
Communication Disorders	101.0	52.9	154.0
Health Professions	131.5	9.5	141.0
Medical Imaging & Radiation Sciences	97.2	0.0	97.2
Physical Therapy	59.2	122.7	181.9
School of Nursing	550.5	212.5	763.0
Social Work	122.1	84.2	206.3
Dietetics Program	54.4	0.0	54.4
Disaster Preparedness Program	130.2	32.4	162.6
Occupational Therapy Program	36.1	83.7	119.8
Total Nursing & Health Professions FTE	1,325.2	597.9	1,923.1
COLLEGE OF SCIENCES & MATHEMATICS			
Biological Sciences	600.6	22.8	623.4
Chemistry & Physics	429.9	3.8	433.7
Computer Science	97.1	76.6	173.7
Mathematics & Statistics	492.7	10.7	503.4
Environmental Sciences Program	0.0	7.2	7.2
Molecular Biosciences Program	0.0	8.3	8.3
Total Sciences & Mathematics FTE	1,620.3	129.3	1,749.6
UNDERGRADUATE STUDIES	360.2	0.0	360.2

Full-Time Equivalent Enrollment (FTE) for the fiscal year is calculated by dividing undergraduate semester credit hours (SCH) by thirty and graduate SCH by twenty-four. (Figures have been rounded.)

Semester Credit Hour Production (SCH)

Jonesboro Campus - Fiscal Year 2016-2017

College/Department/Program	SCH Production		Total
	Undergraduate	Graduate	
COLLEGE OF AGRICULTURE, ENGINEERING & TECHNOLOGY			
Agriculture	7,648	743	8,391
Engineering	5,860	692	6,552
Technology	1,680	0	1,680
Total Agri., Engineering & Tech. SCH.....	15,188	1,435	16,623
COLLEGE OF BUSINESS			
Accounting	5,724	737	6,461
Computer & Information Technology	5,221	574	5,795
Economics & Finance	10,298	746	11,044
Management & Marketing	10,462	1,281	11,743
Total Business SCH	31,705	3,338	35,043
COLLEGE OF EDUCATION & BEHAVIORAL SCIENCE			
Health, Physical Education & Sport Sci	16,263	3,397	19,660
Psychology & Counseling	9,529	1,284	10,813
School of Teacher Education & Leadership	9,900	61,193	71,093
Total Education SCH.....	35,692	65,874	101,566
COLLEGE OF LIBERAL ARTS & COMMUNICATION			
Art & Design	6,182	0	6,182
Communication	8,844	174	9,018
Criminology, Sociology & Geography.....	17,541	267	17,808
English & Philosophy	19,779	364	20,143
History	9,794	276	10,070
Media	4,453	630	5,083
Music.....	6,280	167	6,447
Political Science	5,379	5,347	10,726
Theatre.....	2,537	0	2,537
World Languages & Cultures	4,390	0	4,390
Heritage Studies Program.....	0	472	472
Total Liberal Arts & Comm. SCH.....	85,179	7,697	92,876

College/Department/Program	SCH Production		Total
	Undergraduate	Graduate	
COLLEGE OF NURSING & HEALTH PROFESSIONS			
Clinical Laboratory Sciences.....	1,287	0	1,287
Communication Disorders.....	3,031	1,270	4,301
Health Professions	3,946	228	4,174
Medical Imaging & Radiation Sciences.....	2,916	0	2,916
Occupational Therapy	1,084	2,008	3,092
Physical Therapy.....	1,777	2,945	4,722
School of Nursing.....	16,514	5,101	21,615
Social Work.....	3,663	2,020	5,683
Dietetics Program.....	1,632	0	1,632
Disaster Preparedness Program.....	3,907	777	4,684
Total Nursing & Health Professions SCH.....	39,757	14,349	54,106
COLLEGE OF SCIENCES & MATHEMATICS			
Biological Sciences	18,018	546	18,564
Chemistry & Physics	12,898	91	12,989
Computer Science.....	2,912	1,838	4,750
Mathematics & Statistics	14,781	256	15,037
Environmental Sciences Program.....	0	172	172
Molecular Biosciences Program.....	0	199	199
Total Sciences & Mathematics SCH.....	48,609	3,102	51,711
UNDERGRADUATE STUDIES	10,807	0	10,807

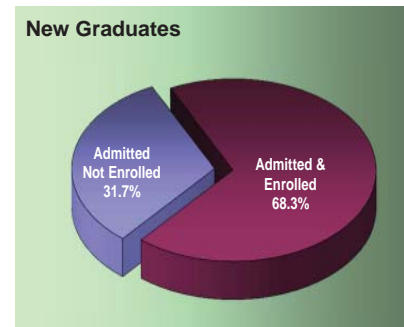
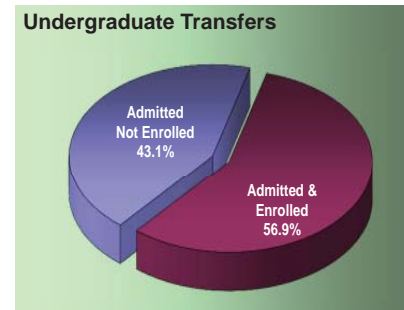
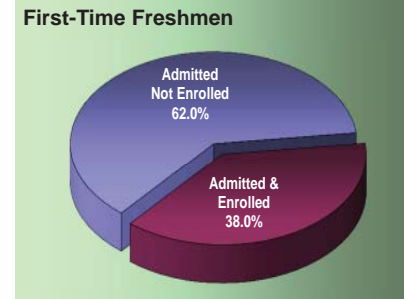
Semester credit hour (SCH) is a unit of measure that represents one student engaged in an instructional activity for a semester for which one credit hour is granted upon successful completion of the activity.

New Student Applications

Jonesboro Campus - Fall 2017

		First-Time Freshmen	Undergraduate Transfers	New Graduates	Percent of Total Applicants by Characteristic		
					First-Time Freshmen	Undergraduate Transfers	New Graduates
From Arkansas							
	Applied	4,020	1,663	1,206			
	Admitted	2,775	1,095	803	69.0%	65.8%	66.6%
	Enrolled	1,172	661	622	29.2%	39.7%	51.6%
From Out-of-State							
	Applied	1,239	636	2,351			
	Admitted	660	308	1,128	53.3%	48.4%	48.0%
	Enrolled	222	136	771	17.9%	21.4%	32.8%
International							
	Applied	424	79	593			
	Admitted	317	30	194	74.8%	38.0%	32.7%
	Enrolled	33	18	59	7.8%	22.8%	9.9%
Male							
	Applied	2,348	782	1,710			
	Admitted	1,525	469	781	64.9%	60.0%	45.7%
	Enrolled	573	306	499	24.4%	39.1%	29.2%
Female							
	Applied	3,335	1,596	2,440			
	Admitted	2,227	964	1,344	66.8%	60.4%	55.1%
	Enrolled	854	509	953	25.6%	31.9%	39.1%
Black, Non-Hispanic							
	Applied	1,060	552	660			
	Admitted	432	258	322	40.8%	46.7%	48.8%
	Enrolled	131	128	214	12.4%	23.2%	32.4%
White, Non-Hispanic							
	Applied	3,592	1,522	2,415			
	Admitted	2,645	1,021	1,418	73.6%	67.1%	58.7%
	Enrolled	1,152	606	1,049	32.1%	39.8%	43.4%
Other Ethnicity*							
	Applied	1,031	304	1,075			
	Admitted	675	154	385	65.5%	50.7%	35.8%
	Enrolled	144	81	189	14.0%	26.6%	17.6%

First-Time Admitted Applicants by Enrollment Status



*NOTE: "Other" includes students reported as American Indian/Alaskan Native, Asian American, Hispanic American, Hawaiian Native/Pacific Islander, those reporting two or more races, International and those whose ethnicity is unknown.
 Data Sources: Application, Acceptance and Enrollment Information
 Information Source: The Office of Institutional Effectiveness: web address: www.AState.edu/irp; email address: asuip@AState.edu

First-Time Freshmen

Jonesboro Campus - Fall 2013 to Fall 2017

Total First-Time Freshmen Enrollment										
	Fall Semesters					Percentage of First-Time Freshmen Total				
	2013	2014	2015	2016	2017	2013	2014	2015	2016	2017
Total First-Time Freshmen	1,619	1,698	1,577	1,644	1,427					
Full-Time*	1,575	1,681	1,542	1,609	1,405	97.3%	99.0%	97.8%	97.9%	98.5%
Part-Time	44	17	35	35	22	2.7%	1.0%	2.2%	2.1%	1.5%
Avg. Hours Enrolled per Semester	14.3	14.6	14.6	14.5	14.9					
Full-Time	14.5	14.7	14.8	14.7	15.0					
Part-Time	7.5	6.9	8.3	6.6	6.1					

First-Time Freshmen Student Demographics										
	Fall Semesters					Percentage of First-Time Freshmen Total				
	2013	2014	2015	2016	2017	2013	2014	2015	2016	2017
Average Age of First-Time Freshmen	18.3	18.3	18.3	18.3	18.2					
Headcount by Gender										
Male	706	774	727	755	573	43.6%	45.6%	46.1%	45.9%	40.2%
Female	913	924	850	889	854	56.4%	54.4%	53.9%	54.1%	59.8%
Headcount by Ethnicity										
African American	226	180	164	187	131	14.0%	10.6%	10.4%	11.4%	9.2%
American Indian/Alaskan Native	5	9	2	7	4	0.3%	0.5%	0.1%	0.4%	0.3%
Asian American	12	12	13	14	8	0.7%	0.7%	0.8%	0.9%	0.6%
Hispanic American	33	50	46	56	48	2.0%	2.9%	2.9%	3.4%	3.4%
Native Hawaiian/Pacific Islander	0	5	0	0	0	0.0%	0.3%	0.0%	0.0%	0.0%
Two or More Races	54	41	37	37	41	3.3%	2.4%	2.3%	2.3%	2.9%
White American	1,230	1,334	1,223	1,208	1,152	76.0%	78.6%	77.6%	73.5%	80.7%
Ethnicity Unknown	5	5	3	11	10	0.3%	0.3%	0.2%	0.7%	0.7%
International	54	62	89	124	33	3.3%	3.7%	5.6%	7.5%	2.3%

*NOTE: A "full-time" undergraduate student load is 12 or more semester credits.
 Data Sources: Student Enrollment Information
 Information Source: The Office of Institutional Effectiveness; web address: www.AState.edu/irp; email address: asuip@AState.edu

Academic Preparation - Admission Test Scores

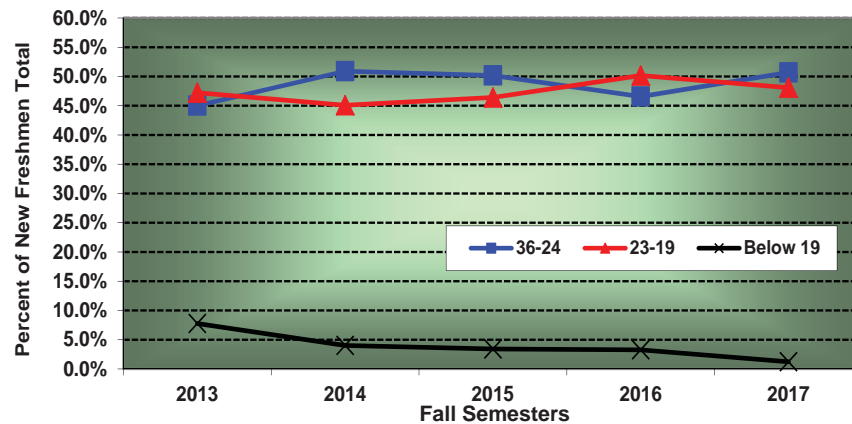
Jonesboro Campus

24.0 Average ACT Composite Score for Jonesboro Campus - Fall 2017

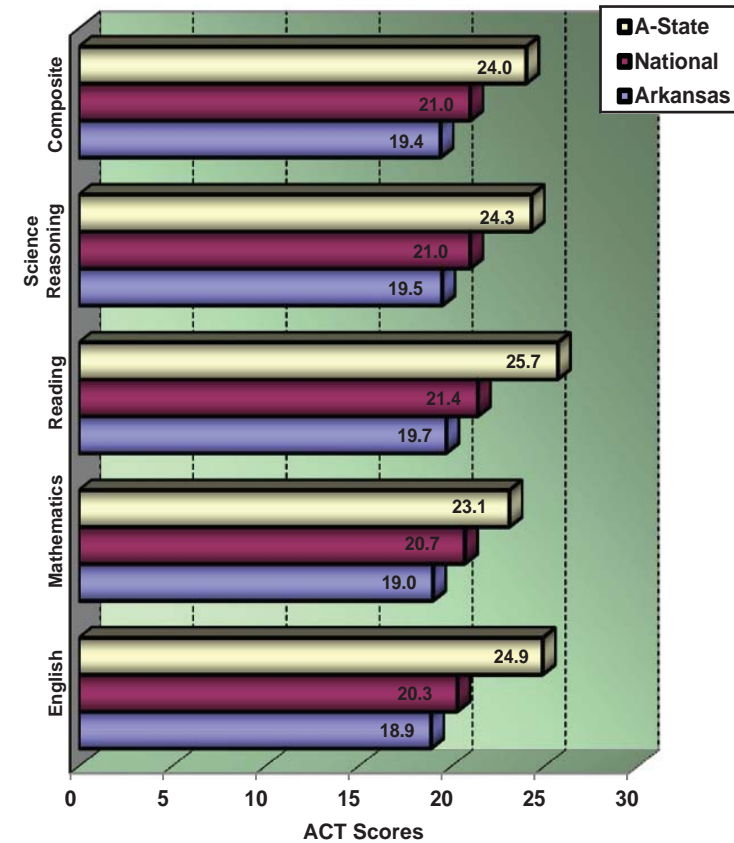
HISTORICAL COMPOSITE ACT SCORE DISTRIBUTION FOR FIRST-TIME FRESHMEN
Fall Semesters

Composite Score	Fall Semesters				
	2013	2014	2015	2016	2017
30-36	72	128	95	112	112
24-29	617	684	640	587	588
19-23	723	719	680	753	664
Below 19	119	64	50	49	17
Other Test Scores	88	103	112	143	46
Average High School GPA	3.44	3.47	3.51	3.48	3.56

HISTORICAL COMPOSITE ACT SCORE DISTRIBUTION PERCENTAGES
Fall Semesters



A-STATE ACT AVERAGES VS. NATIONAL & STATE AVERAGES
Fall 2017



Data Sources: Student Enrollment Information; American College Testing (ACT)
Information Source: The Office of Institutional Effectiveness: web address: www.AState.edu/irp; email address: asuipr@AState.edu

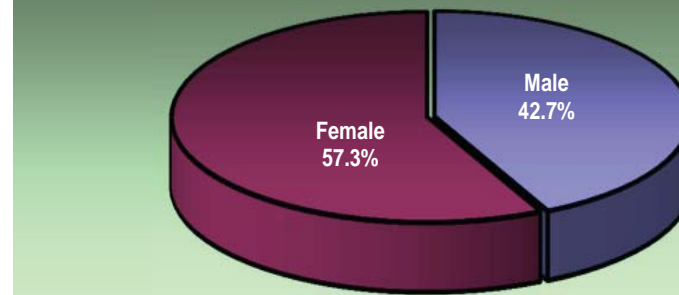
Academic Preparation - Remediation

Jonesboro Campus

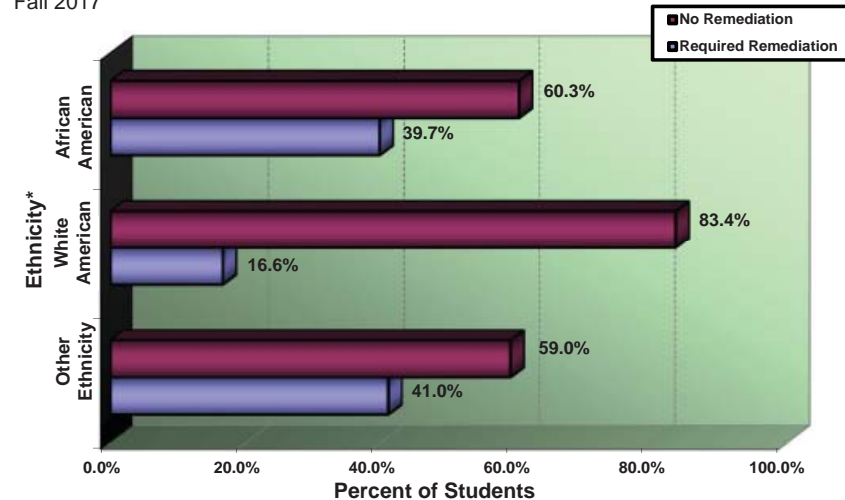
NUMBER OF FIRST-TIME FRESHMEN REQUIRING REMEDIATION BY SUBJECT
Fall Semesters

Subject	Fall Semesters				
	2013	2014	2015	2016	2017
English	152	134	170	204	93
Mathematics	296	271	234	283	229
Reading	145	106	143	164	69
Unduplicated Count	424	383	354	445	302
% Requiring Remediation	26.2%	22.6%	22.4%	27.1%	21.2%

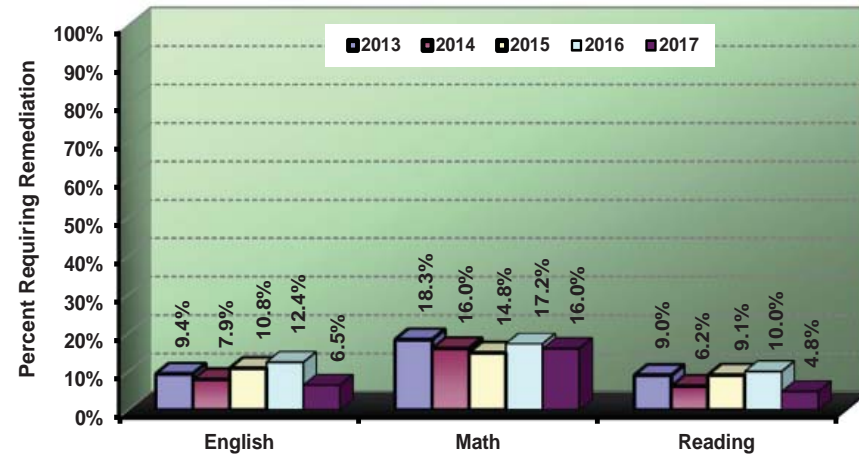
GENDER DISTRIBUTION OF FIRST-TIME FRESHMEN REQUIRING REMEDIATION
Fall 2017



FIRST-TIME FRESHMAN REMEDIATION ASSESSMENT BY ETHNICITY
Fall 2017



PERCENT OF FIRST-TIME FRESHMEN REQUIRING REMEDIATION
Fall Semesters



*NOTE: "Other" includes students reported as American Indian/Alaskan Native, Asian American, Hispanic American, Hawaiian Native/Pacific Islander, those reporting two or more races, International and those whose ethnicity is unknown.
Data Source: Student Enrollment Information
Information Source: The Office of Institutional Effectiveness; web address: www.AState.edu/irp; email address: asuipr@AState.edu

Academic Progress - Retention Rates

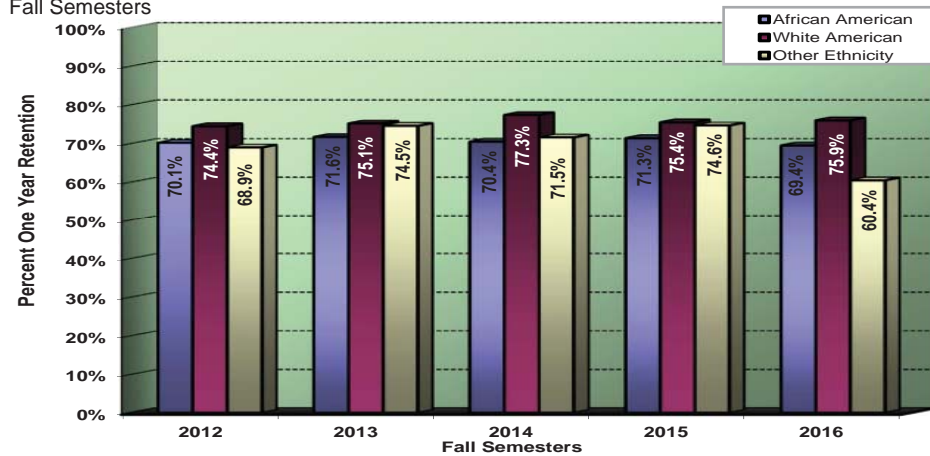
Jonesboro Campus

The most recent one-year retention rate is 72.8%.

HISTORICAL RETENTION RATES FOR FULL-TIME, FIRST-TIME FRESHMEN
Fall Semesters

Fall Semesters	Cohort Size	Fall to Fall Retention* After	
		1 Year	2 Years
2006	1,663	68.6%	56.6%
2007	1,666	68.3%	56.3%
2008	1,752	67.9%	52.5%
2009	1,650	70.8%	54.8%
2010	1,665	71.3%	60.2%
2011	1,505	70.4%	61.4%
2012	1,633	73.1%	61.2%
2013	1,575	74.5%	63.7%
2014	1,681	76.0%	65.2%
2015	1,542	74.9%	63.0%
2016	1,609	72.8%	

HISTORICAL RETENTION RATES FOR FULL-TIME, FIRST-TIME FRESHMEN BY ETHNICITY
Fall Semesters



Academic Progress - Graduation Rates

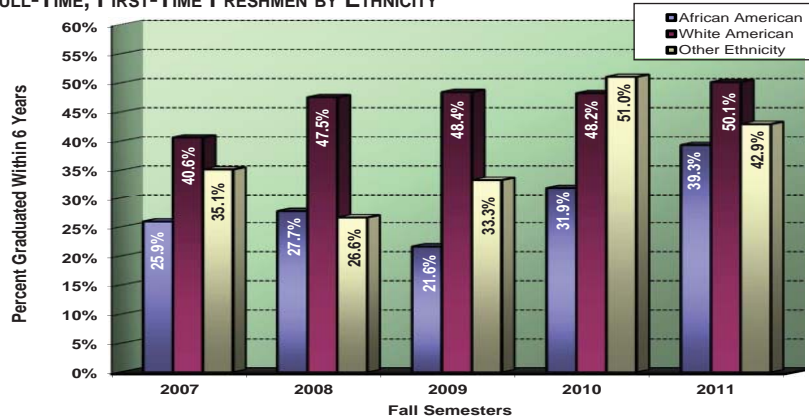
Jonesboro Campus

The most recent graduation rate within 150% of time is 47.5%.

HISTORICAL GRADUATION RATES* FOR FULL-TIME, FIRST-TIME FRESHMEN

Fall Semesters	Cohort	Adjusted Cohort	Total Completers Within 150% of Time	Graduating with Bachelor's			
				Within 150% of Time			Within 200% of Time
				4 Years	5 Years	6 Years	8 Years
2003	1,433	1,426	37.2%	16.3%	30.4%	36.6%	40.3%
2004	1,303	1,296	33.7%	16.4%	28.0%	33.4%	37.6%
2005	1,491	1,483	38.4%	19.4%	32.5%	38.0%	39.3%
2006	1,663	1,659	39.5%	20.8%	33.8%	39.1%	40.7%
2007	1,666	1,655	37.0%	18.7%	31.2%	35.7%	40.4%
2008	1,752	1,743	39.3%	20.2%	32.0%	37.2%	40.6%
2009	1,650	1,645	40.1%	21.2%	34.7%	38.8%	41.3%
2010	1,665	1,659	45.4%	26.4%	39.2%	43.9%	
2011	1,505	1,501	47.5%	29.4%	41.6%	46.0%	

HISTORICAL SIX-YEAR GRADUATION RATES FOR FULL-TIME, FIRST-TIME FRESHMEN BY ETHNICITY**



HISTORICAL SIX-YEAR GRADUATION RATES FOR FULL-TIME STUDENT ATHLETES WITH ATHLETIC AID

Fall Semesters	First-Time Freshmen		Undergraduate Transfers	
	Cohort Size	Percent Graduated	Cohort Size	Percent Graduated
2002	34	44.1%	26	73.1%
2003	41	58.5%	27	59.3%
2004	49	65.3%	14	50.0%
2005	55	50.9%	27	63.0%
2006	57	52.6%	23	56.5%
2007	64	51.6%	21	71.4%
2008	64	59.4%	18	83.3%
2009	63	58.7%	23	78.3%
2010	66	71.2%	18	66.7%
Average 2002-2010	55	57.6%	22	67.0%

*NOTE: Graduates Rates are cumulative and based on IPEDS Methodology. Graduation Rates within 150% of time represents students earning an associate degree within 3 years and students earning a bachelor's degree within 4-5-or 6 years. Graduation Rates with 200% of time includes students earning a bachelor's degree within 7-8 years. Adjusted Cohort reflects the original fall cohort after allowable exclusions: Students who died or became permanently disabled; Students who left school to serve in the armed forces; students who left school to serve with a foreign aid service of the Federal Government; and students who left school to serve on an official church mission.

**NOTE: "Other" includes students reported as American Indian/Alaskan Native, Asian American, Hispanic American, Native Hawaiian/Pacific Islander, those reporting two or more races, International and those whose ethnicity is unknown.

Data Sources: Student Enrollment Information; NCAA Division I Graduation Rate Reports

Information Source: The Office of Institutional Effectiveness: web address: www.AState.edu/irp; email address: asuipr@AState.edu

Undergraduates

Jonesboro Campus - Fall 2013 to Fall 2017

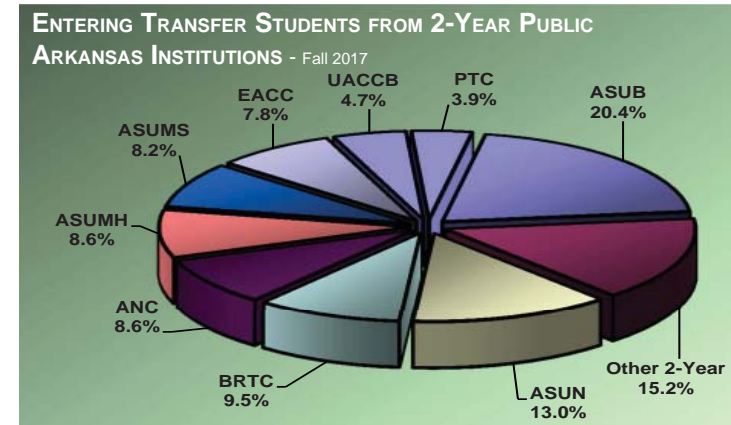
Total Undergraduates										
	Fall Semesters					Percentage of Undergraduate Total				
	2013	2014	2015	2016	2017	2013	2014	2015	2016	2017
Total Undergraduates	10,098	9,857	9,592	9,839	9,604					
All Freshmen	2,447	2,348	2,173	2,205	1,986	24.2%	23.8%	22.7%	22.4%	20.7%
Sophomore	1,829	1,796	1,778	1,702	1,722	18.1%	18.2%	18.5%	17.3%	17.9%
Junior	2,146	2,155	2,157	2,194	2,081	21.3%	21.9%	22.5%	22.3%	21.7%
Senior	2,859	2,807	2,766	2,807	2,809	28.3%	28.5%	28.8%	28.5%	29.2%
Headcount by Load										
Full-Time	7,645	7,465	7,295	7,305	6,894	75.7%	75.7%	76.1%	74.2%	71.8%
Part-Time	2,453	2,392	2,297	2,534	2,710	24.3%	24.3%	23.9%	25.8%	28.2%
Undergraduate Demographics										
	Fall Semesters					Percentage of Undergraduate Total				
	2013	2014	2015	2016	2017	2013	2014	2015	2016	2017
Headcount by Age										
Under 25	7,836	7,776	7,737	7,931	7,763	77.6%	78.9%	80.7%	80.6%	80.8%
25 & Older	2,262	2,081	1,855	1,908	1,841	22.4%	21.1%	19.3%	19.4%	19.2%
Headcount by Gender										
Male	4,279	4,208	4,112	4,185	3,881	42.4%	42.7%	42.9%	42.5%	40.4%
Female	5,819	5,649	5,480	5,654	5,723	57.6%	57.3%	57.1%	57.5%	59.6%
Headcount by Ethnicity										
African American	1,410	1,364	1,272	1,256	1,213	14.0%	13.8%	13.3%	12.8%	12.6%
American Indian/Alaskan Native	39	41	34	28	26	0.4%	0.4%	0.4%	0.3%	0.3%
Asian American	79	76	77	83	87	0.8%	0.8%	0.8%	0.8%	0.9%
Hispanic American	211	229	246	260	268	2.1%	2.3%	2.6%	2.6%	2.8%
Native Hawaiian/Pacific Islander	9	13	8	7	3	0.1%	0.1%	0.1%	0.1%	<0.1%
Two or More Races	167	171	189	200	206	1.7%	1.7%	2.0%	2.0%	2.1%
White American	7,477	7,361	7,197	7,368	7,255	74.0%	74.7%	75.0%	74.9%	75.5%
Ethnicity Unknown	139	84	66	73	78	1.4%	0.9%	0.7%	0.7%	0.8%
International	567	518	503	564	468	5.6%	5.3%	5.2%	5.7%	4.9%

Undergraduate Transfer Students

Jonesboro Campus

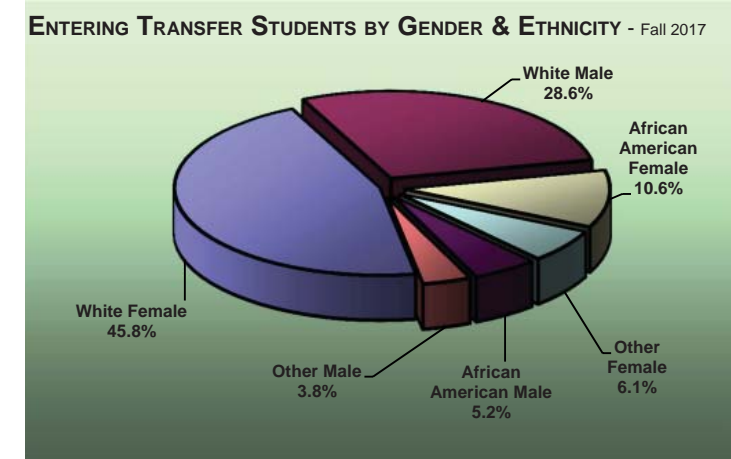
HISTORICAL ENTERING TRANSFER STUDENTS BY ORIGINATING ARKANSAS PUBLIC INSTITUTION

Students Transferring to A-State from the Following Originating Institutions	Fall Semesters				
	2013	2014	2015	2016	2017
University of Arkansas-Fayetteville	19	11	17	18	13
University of Arkansas-Little Rock	12	8	8	11	13
University of Central Arkansas	14	26	18	28	15
Other 4-Year Public Institutions	23	44	27	32	31
Arkansas State University-Beebe	136	111	142	103	99
Arkansas State University-Mountain Home	47	40	55	46	42
Arkansas State University-Newport	65	71	57	70	63
Arkansas State University Mid-South	--	--	27	28	40
Other 2-Year Public Institutions	322	292	250	253	242
Total Entering Transfers	638	603	601	589	558



HISTORICAL ENTERING TRANSFER STUDENTS BY TOP DEGREE PROGRAMS

Students Entering A-State into the Following Top Degree Programs		Fall Semesters				
		2013	2014	2015	2016	2017
BSN	Nursing	77	85	69	80	88
BS	Biological Sciences	28	33	25	25	27
BGS	General Studies	--	3	48	59	53
BSE	Elementary Education	--	--	27	42	60
BSE	Middle Level Education	56	40	36	25	27
BA	Criminology	24	35	34	47	28
BSRS	Radiological Sciences	23	19	25	19	30
BS	Business Administration	33	27	31	38	38
BS	Management	34	30	31	26	25
BS	Psychology	25	22	28	29	24



Data Source: Student Enrollment Information
 Information Source: The Office of Institutional Effectiveness: web address: www.AState.edu/irp; email address: asuip@AState.edu

Graduates



Jonesboro Campus - Fall 2013 to Fall 2017

Total Graduates										
	Fall Semesters					Percentage of Graduate Total				
	2013	2014	2015	2016	2017	2013	2014	2015	2016	2017
Total Graduates	3,454	3,287	3,818	4,246	4,326					
Master's	2,593	2,477	2,911	3,213	3,290	75.1%	75.4%	76.2%	75.7%	76.1%
Specialist	506	490	546	667	699	14.6%	14.9%	14.3%	15.7%	16.2%
Doctoral	222	227	269	280	292	6.4%	6.9%	7.0%	6.6%	6.7%
Other Graduates	133	93	92	86	45	3.9%	2.8%	2.4%	2.0%	1.0%
Headcount by Load										
Full-Time*	739	661	736	756	703	21.4%	20.1%	19.3%	17.8%	16.3%
Part-Time	2,715	2,626	3,082	3,490	3,623	78.6%	79.9%	80.7%	82.2%	83.7%
Graduate Demographics										
	Fall Semesters					Percentage of Graduate Total				
	2013	2014	2015	2016	2017	2013	2014	2015	2016	2017
Graduate Students by Enrollment Status Category										
New Graduate Students	1,303	1,262	1,510	1,501	1,452	37.7%	38.4%	39.5%	35.4%	33.6%
A-State Graduates Returning	2,151	2,025	2,308	2,745	2,874	62.3%	61.6%	60.5%	64.6%	66.4%
Headcount by Gender										
Male	1,107	1,139	1,334	1,440	1,456	32.0%	34.7%	34.9%	33.9%	33.7%
Female	2,347	2,148	2,484	2,806	2,870	68.0%	65.3%	65.1%	66.1%	66.3%
Headcount by Ethnicity										
African American	513	470	516	580	618	14.9%	14.3%	13.5%	13.7%	14.3%
American Indian/Alaskan Native	18	30	20	31	28	0.5%	0.9%	0.5%	0.7%	0.6%
Asian American	18	26	34	33	31	0.5%	0.8%	0.9%	0.8%	0.7%
Hispanic American	56	64	78	90	90	1.6%	1.9%	2.0%	2.1%	2.1%
Native Hawaiian/Pacific Islander	1	3	4	3	4	<0.1%	0.1%	0.1%	0.1%	0.1%
Two or More Races	44	38	53	49	63	1.3%	1.2%	1.4%	1.2%	1.5%
White American	2,518	2,383	2,799	3,080	3,126	72.9%	72.5%	73.3%	72.5%	72.3%
Ethnicity Unknown	46	45	57	93	120	1.3%	1.4%	1.5%	2.2%	2.8%
International	240	228	257	287	246	6.9%	6.9%	6.7%	6.8%	5.7%

*NOTE: A "full-time" graduate student load is 9 or more semester credits.
 Data Source: Student Enrollment Information
 Information Source: The Office of Institutional Effectiveness: web address: www.AState.edu/irp; email address: asuirp@AState.edu

Student Athletes

COLORS: Scarlet & Black

MASCOT: Red Wolves

SPIRIT CHARACTER: HOWL

AFFILIATION:

Arkansas State University fields sixteen sports - seven for men and nine for women - in NCAA Division I. A-State's football program competes in NCAA Football Bowl Sub-division (FBS).

CONFERENCE:

A-State belongs to the Sun Belt Conference (SBC) in all sports with the exception of bowling. The bowling program is a member of the Southland Bowling League.

ACADEMICS:

- ◆ The Athletics Department set new school records for both its Graduation Success Rate (GSR) and federal graduation rate, according to the latest data announced Nov. 8, 2017 by the NCAA national office. The Red Wolves posted a department-wide 83 percent GSR, topping its previous high of 79 percent set just last year. A-State's federal graduation rate of 60 percent was one point higher than its previous record set in 2011.
- ◆ A-State posted a school-record 3.070 all-department GPA for the entire 2016-17 academic year.
- ◆ The Red Wolves placed a school-record 223 student-athletes on the Athletics Director's Honor Roll for the 2017 fall semester.
- ◆ Arkansas State's latest APR score of 969 set the school record.
- ◆ Four athletics programs – women's bowling, women's golf, women's tennis and women's cross country – earned a Public Recognition Award from the NCAA for earning multi-year Academic Progress Rates (APR) in the top 10 percent of all teams in each sport.
- ◆ A-State placed 172 student-athletes on the most recent Sun Belt Conference Commissioner's List and Academic Honor Roll combined. The Red Wolves had 81 student-athletes on the Commissioner's List (3.5 average GPA or higher) and 91 student-athletes achieved Academic Honor Roll (3.0-3.49 GPA) recognition.
- ◆ Senior football cornerback Blaise Taylor was named a finalist for the prestigious William V. Campbell Trophy and became just the second student-athlete in A-State history to be named a NFF National Scholar-Athlete.

COMPETITIVE PERFORMANCE:

- ◆ Capital One Cup (June 28, 2017): Arkansas State, which saw its first ever female student-athlete win a national championship in 2014 while Mohajir was in his second year as Athletics Director, narrowly missed its third ever prestigious Capital One Cup "Top 50" Award in June of 2017 with a No. 51 ranking in the nation among all NCAA Division I women's athletics programs. A-State's No. 51 ranking was the highest in the Sun Belt and its No. 44 ranking in 2014 remains the highest in league history.
- ◆ Learfield Sports Director's Cup (July 5, 2017): A-State collected its second best ever finish in the Learfield Sports Director's Cup in 2017, jumping 10 places in the standings with a No. 118 ranking that was tops in the Sun Belt Conference. The only time the Red Wolves had a better finish was in 2014, when they placed No. 83 among 297.
- ◆ The 2017 season saw the Arkansas State football team extend its streak of bowl-game appearances to seven consecutive seasons, which is the third longest streak in the nation among Group of 5 conferences. It is also the 17th longest active streak in the nation among all FBS programs.
- ◆ Sophomore punter Cody Grace was among 10 finalists announced by the Augusta Sports Council for the prestigious 2017 Ray Guy Award.
- ◆ Senior cornerback and return specialist Blaise Taylor was named one of three finalists for the 2017 Wuerffel Trophy.
- ◆ Senior defensive end Ja'Von Rolland-Jones repeated as the Sun Belt Conference Player of the Year, while junior quarterback Justice Hansen was named the Offensive Player of the Year to highlight a school-record 19 A-State selections to the 2017 All-Sun Belt Conference Team.
- ◆ Currently ranked No. 3 in the nation, the A-State women's bowling team finished runner-up in the Southland Bowling League Championships last March and went on to make its 10th all-time appearance in the NCAA Tournament. Then a junior, Jordan Richard was named the NTCA Division I Player of the Year and was among three A-State bowlers named All-America.
- ◆ A-State's women's outdoor track and field team finished runner-up at the most recent Sun Belt Conference Championships (spring 2017). The men's and women's team had four combined All-America selections. The two teams sent a school-record six student-athletes in seven events to the NCAA Outdoor Track & Field Championships.
- ◆ The men's golf team, under the direction of first-year head coach Mike Hagen, ranked No. 87 in the nation by Golfstat after ranking No. 199 just two years prior.

- ◆ Junior outside hitter Carlisa May was named the 2017 Sun Belt Conference Volleyball Offensive Player of the Year and was named first team all-conference along with Drew Jones. Ellie Watkins and Tatum Ticknor picked up Second Team All-Sun Belt Conference honors.
- ◆ The Red Wolves played in the 2017 National Invitational Volleyball Championship (NIVC).
- ◆ A school-record three women's soccer players were named All-Sun Belt Conference, including second team choices Sarah Sodoma, Kelsey Ponder and Riley Ebenroth. Additionally, Sodoma also became the first A-State player to ever be named Freshman of the Year.

SPECIAL EVENT, TICKETS, REVENUE & FACILITIES

- ◆ The Athletics Department was approved to begin construction on its Centennial Bank Stadium \$29-million "North End Zone Expansion" project.
- ◆ The Arkansas State University Board of Trustees voted to name A-State's football field "Allison Field" and its future north end zone facility "Centennial Bank Athletics Operations Center" in recognition of a combined \$10 million from the Johnny Allison family and Centennial Bank to the Red Wolves Foundation.
- ◆ In recognition of a \$5 million contribution by First National Bank to the Red Wolves Foundation, the Arkansas State University Board of Trustees voted to rename A-State's multi-purpose facility formerly known as the Convocation Center to "First National Bank Arena."
- ◆ While the Red Wolves Leadership Academy was created four years ago, its main objective to obtain 100 percent job placement for all of A-State's graduating student-athletes was once again accomplished this year.
- ◆ The athletics department announced an unprecedented apparel contract for A-State Intercollegiate Athletics that put it in an elite partnership with adidas.

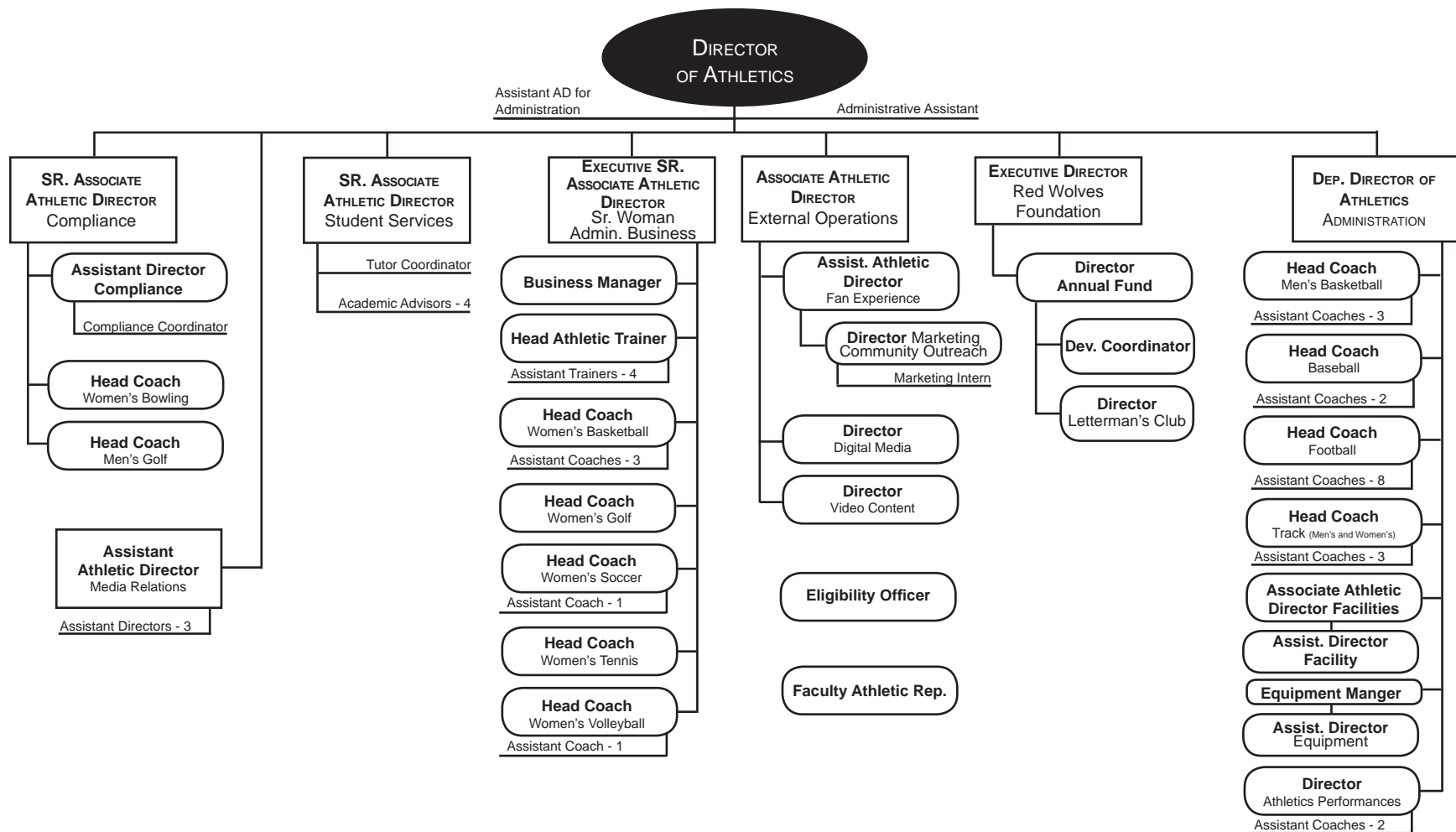
STUDENT ATHLETE PARTICIPATION* – 2017-2018

Football.....	133
Baseball.....	37
Men's Basketball.....	15
Women's Basketball.....	15
Women's Bowling.....	8
Men's Cross Country/Track & Field.....	52
Women's Cross Country/Track & Field.....	49
Men's Golf.....	10
Women's Golf.....	9
Women's Soccer.....	25
Women's Tennis.....	7
Women's Volleyball.....	17

*NOTE: Athletic participants who played on multiple teams are counted in each sport and produce a duplicated count.
 Data Source: Athletic Administration, Arkansas State University-Jonesboro
 Information Source: The Office of Institutional Effectiveness: web address: www.AState.edu/irp; email address: asuirp@AState.edu

Athletic Administration, A-State

2017 - 2018 Organizational Structure



Data Source: Athletic Administration, Arkansas State University
 Information Source: The Office of Institutional Effectiveness: web address: www.AState.edu/irp; email address: asuip@AState.edu

Dean B. Ellis Library



Library	Fiscal Years				
	2013	2014	2015	2016	2017
Holdings					
Books (volumes)	1,093,849	932,056	838,243	862,790	938,252
Current Periodicals (# of subscriptions)	33,889	33,952	40,822	37,221	113,797
Government Documents (volumes)	524,728	510,722	525,525	525,995	522,110
Media (units)	30,520	28,736	112,847	154,894	148,473

Library	Fiscal Years				
	2013	2014	2015	2016	2017
Usage					
Library Usage - Circulation					
Faculty	6,766	5,985	6,127	5,855	5,491
General	23,880	21,059	22,966	25,227	22,944
Other	1,336	193	139	133	79
Documents	1	5	17	0	49
Periodicals	14	4	2	2	0
Reserve	513	644	896	997	1,443
Special Collections	684	447	800	161	580
In Library Use (materials shelved)	10,425	10,741	6,599	8,152	5,414
Online Text Views	3,110,868	2,252,734	2,324,769	2,477,730	1,700,254
Interlibrary Loan					
Borrowed	3,347	3,047	2,803	2,417	1,872
Loaned	6,821	6,886	6,105	7,984	8,062
Gate Count	415,580	386,541	358,002	365,018	336,284
Information Service to Groups					
Presentations	255	226	267	409	446
# of Persons Served	3,702	3,322	4,310	7,390	8,447

The Dean B. Ellis Library, centrally located in an eight-story building, is an educational center for the A-State community. The Library of Congress classification system is used to organize print books and media, and web-based catalogs provide access to the library's physical and online collections. Fifteen professional librarians and nineteen support staff provide a variety of library services to meet the information needs of the university, including off-campus access to web-based academic resources and acquiring materials in a wide range of formats. Reference and instruction librarians assist users in locating information and in using the library. The library also offers an active library and research skills instruction program which reaches numerous university classes. The library provides access to hundreds of online resource and data services, including more than 350,000 E-Books, via links on the library's web site. Materials that are not contained in the library's collection are accessible by interlibrary loan through the OCLC network.



Dean B. Ellis Library, Arkansas State University

Data Source: Dean B. Ellis Library, Arkansas State University
 Information Source: The Office of Institutional Effectiveness: web address: www.AState.edu/irp; email address: asuip@AState.edu

Student Costs - Tuition & Required Fees

Arkansas Universities

HISTORICAL ANNUAL TUITION & REQUIRED FEES Jonesboro Campus

Academic Year	Undergraduate				Graduate			
	Annual Tuition & Fees (Based on 15 Hour Load per Semester)		Per Credit Hour Tuition		Annual Tuition & Fees (Based on 9 Hour Load per Semester)		Per Credit Hour Tuition	
	Resident	Nonresident	Resident	Nonresident	Resident	Nonresident	Resident	Nonresident
2006-2007	\$5,710	\$12,760	\$149	\$384	\$4,145	\$9,329	\$189	\$477
2007-2008	6,010	13,390	154	400	4,370	9,770	196	496
2008-2009	6,370	14,290	163	427	4,640	10,436	208	530
2009-2010	6,370	14,290	163	427	4,640	10,436	208	530
2010-2011	6,640	14,860	170	444	4,820	10,850	216	551
2011-2012	6,934	12,238	177	354	5,030	9,073	225	449
2012-2013	7,180	12,610	181	362	5,198	9,338	230	460
2013-2014	7,510	13,120	187	374	5,432	9,716	238	476
2014-2015	7,720	13,480	192	384	5,576	9,968	244	488
2015-2016	8,050	14,050	200	400	5,810	10,382	254	508
2016-2017	8,200	14,260	202	404	5,918	10,544	257	514
2017-2018	8,478	14,778	210	420	6,121	10,927	267	534

2017-2018 ANNUAL TUITION & REQUIRED FEES Universities in Arkansas

University	Resident		Nonresident	
	First-Time Freshmen		First-Time Freshmen	
	Undergraduate (15 Hour Load)	Graduate (9 Hour Load)	Undergraduate (15 Hour Load)	Graduate (9 Hour Load)
Arkansas State University*	\$8,478	\$6,121	\$14,778	\$10,927
Arkansas Tech University**	8,880	6,372	15,660	11,484
Henderson State University***	8,381	6,063	16,661	12,111
Southern Arkansas University**	8,406	6,048	12,216	8,568
Univ. of Arkansas-Fayetteville†	9,189	8,571	24,435	20,792
Univ. of Arkansas-Ft. Smith	6,965	8,120	15,806	12,620
Univ. of Arkansas-Little Rock**	8,976	7,248	21,231	14,538
Univ. of Arkansas-Monticello	7,462	6,521	13,312	10,931
Univ. of Arkansas-Pine Bluff***	7,249	5,178	13,501	9,894
Univ. of Central Arkansas	8,524	6,093	15,047	10,900

2017-2018 ANNUAL TUITION & REQUIRED FEES Other ASU Campuses

(Full-Time Based on 15 Hour Load per Semester)	Campuses			
	ASUB	ASUMH	ASUN	ASUMS
Resident Tuition				
Full-Time Tuition	\$3,000	\$2,880	\$2,880	\$3,360
Per Credit Hour Tuition	100	96	96	112
Nonresident Tuition				
Full-Time Tuition	5,160	4,890	4,710	4,560
Per Credit Hour Tuition	172	163	157	152
Annualized Fees				
	540	660	570	640

*NOTE: There is a higher per-credit-hour tuition for A-State courses in the Colleges of Business, Engineering, Nursing & Health Professions and Sciences & Mathematics. Differential tuition for non-resident, first-time and returning students prior to 2011.

**NOTE: ATU and SAU annual tuition and required fees include all or part of the athletic fee.

***NOTE: HSU annual tuition and required fees include a one-time \$20 transcript fee and a \$50 orientation fee for first-time students. Athletic fee is also included in annual tuition and fees.

†NOTE: UAF has tuition rates and academic fees based on the college of enrollment. Calculations reflect the College of Business. A \$50 new student fee, a \$55 FYE fee and a \$22 ID card fee for first-time freshmen are included in the annual tuition and fees.

††NOTE: UALR has tuition rates and academic fees based on the college of enrollment. Calculations reflect the College of Business. A \$40 orientation fee for first-time undergraduate students is included in the tuition and fees.

†††NOTE: UAPB annual tuition and required fees include a one-time \$37 matriculation fee for first-time students.

Information Source: The Office of Institutional Effectiveness: web address: www.AState.edu/irp; email address: asuirp@AState.edu

Student Costs - Residence Life

Jonesboro Campus

HOUSING OCCUPANCY

Housing	Fall 2017 Capacity	Occupancy at Beginning of Fall Semester				
		2013	2014	2015	2016	2017
Residence Halls						
Arkansas Hall	362	263	348	286	325	228
Greek Village	105	105	103	104	104	101
Kays Hall	455	395	420	404	392	366
Living Learning Communities (Honors, ROTC & STEM)	423	405	402	414	396	354
Northpark Quads	836	807	770	800	789	732
University Hall	300	293	295	289	284	292
Total Residence Halls	2,481	2,268	2,338	2,297	2,290	2,073
Collegiate Park Apartments	334	313	298	320	308	214
Pack Place	342	--	--	--	--	334
Red Wolf Den Apartments	185	183	182	186	146	131
The Circle	178	--	--	--	--	37
Village Apartments	218	159	164	148	140	134
Married Student Houses	16	39	41	35	13	11
Total All Housing	3,754	2,962	3,023	2,986	2,897	2,934

2017-2018 RESIDENCE HALLS PER SEMESTER

Residence Halls	Double	Single	Deluxe
Arkansas Hall	\$2,270	\$2,570	\$2,545
Greek Village	2,340	2,570	N/A
Kays Hall	2,270	2,570	N/A
Living Learning Communities (LLC)			
LLC Honors (Bldg. 1-3)	2,315	2,480	N/A
LLC Honors (Bldg. 4)	2,340	2,570	N/A
LLC ROTC	N/A	2,280	2,305
LLC STEM	N/A	2,280	2,305
Northpark Quads (Bldg. 1-2)	N/A	2,705	N/A
Northpark Quads (Bldgs. 3-5)	N/A	2,550	N/A
University Hall	2,270	2,570	2,545

2017-2018 MEAL PLANS

	Rates
5 Day + 250	\$1,670
5 Day + 300	1,695
7 Day + 200	1,670
7 Day + 400	1,820
105 Meal Block + 700 >=Sophomore	1,560
150 Meal Block + 400 >=Sophomore	1,515
150 Meal Block + 500 >=Sophomore	1,595
All Flex Plan >=Junior	1,450

2017-2018 APARTMENTS PER SEMESTER

Apartments	Collegiate Park	Pack Place	Red Wolf Den	The Circle	Village
1 Bed / 1 Bath	N/A	N/A	N/A	\$3,937	\$2,965
2 Bed / 2 Bath	\$2,855	\$3,450	N/A	3,450	N/A
2 Bed / 1 Bath	2,615	N/A	\$2,705	N/A	3,500
2 Bed / 1 Bath w/ washer dryer hookup	N/A	N/A	N/A	N/A	3,660
3 Bed	N/A	N/A	2,590	N/A	3,980
4 Bed Townhouse	2,560	N/A	N/A	N/A	N/A
4 Bed Flat	2,520	N/A	2,620	N/A	N/A

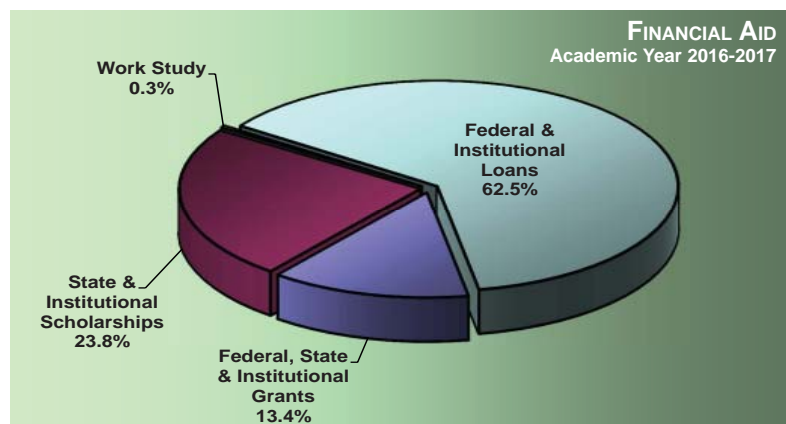
Financial Aid

Jonesboro Campus - By Academic Year

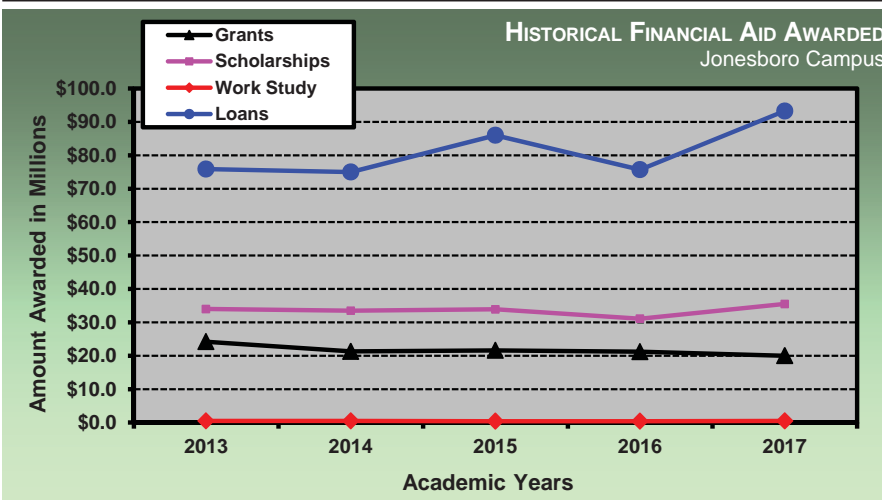
Financial aid is available to Arkansas State University students from a variety of sources. Not only can students obtain federal aid, state aid and privately funded scholarships, but A-State also offers several types of institutional scholarship packages to qualifying Arkansas residents and non-residents. The scholarships are primarily awarded based on ACT scores, GPA's and/or academic achievement. Institutional scholarships available include the following: Arkansas Promise; A-State Scholar, Excellence Incentive Legacy, Leadership, Pride, and Spirit; Beyond Boundaries; Transfer; and Out-of-State Scholarships. For more information visit A-State Financial Aid & Scholarships' web site.

FINANCIAL AID AWARDED - JONESBORO CAMPUS Academic Year 2016-2017

Aid Category	Unduplicated Number of Recipients	Amount of Awards
JONESBORO RECIPIENTS		
Federal, State, & Institutional Grants	5,195	\$20,017,065
State & Institutional Scholarships	5,370	35,452,447
Work Study	196	493,976
Federal & Institutional Loans	9,787	93,254,844
Total Aid Awarded	12,799	\$149,218,332



Federal Aid Programs	
Work-Study Program	Stafford Student Loan
Parent Loan (Undergraduate Students)	(Subsidized & Unsubsidized)
Pell Grants	Supplemental Educational Opportunity Grants
Perkins Student Loan	
State Programs	
Arkansas Academic Challenge Scholarship	Minority Teachers Scholarship
GO! Opportunities Grant	Nurse Educator Loan
Governor's Distinguished Scholarship	Second Effort Scholarship
Law Enforcement Dependent's Scholarship	State Grants
MIA/KIA Dependents Scholarship	State Teacher Education Program
Military Dependents Scholarship	Teacher Opportunity Program
Minority Masters Fellows Program	Workforce Improvement Grant
University Aid Programs	
Arkansas Promise	A-State Spirit
A-State Excellence	A-State Leadership
A-State Pride	Beyond Boundaries



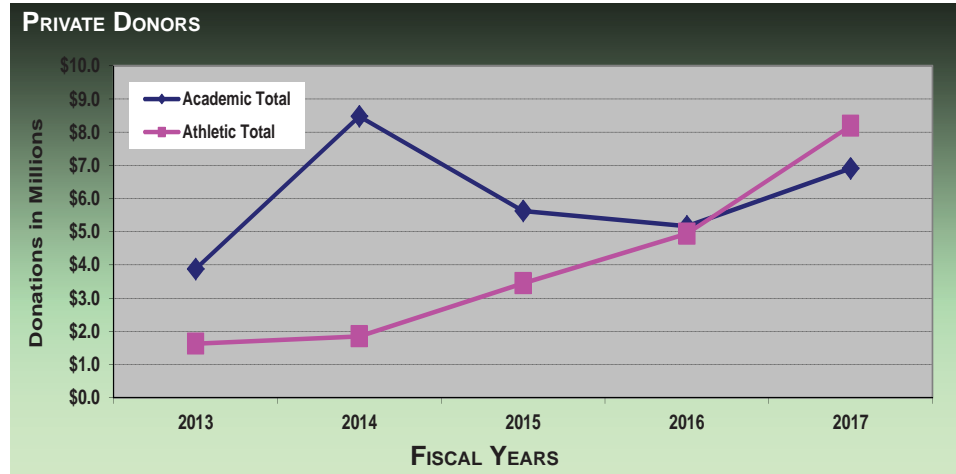
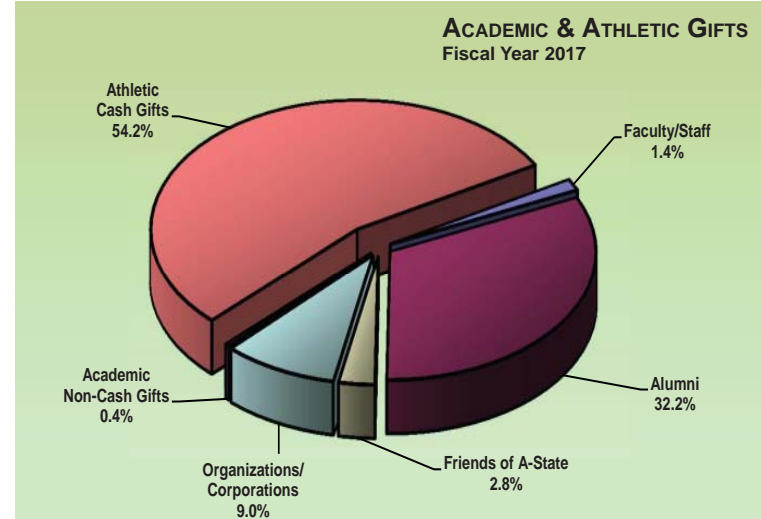
*NOTE: Data represents only the financial aid processed through A-State.
Data Source: Financial Assistance to Students in Institutions of Higher Education
Information Source: The Office of Institutional Effectiveness: web address: www.AState.edu/irp; email address: asuip@AState.edu

Arkansas State University Donors



Jonesboro Campus

Source of Donation	Fiscal Years				
	2013	2014	2015	2016	2017
Academic Gifts					
Faculty/Staff	\$231,245	\$183,638	\$188,717	\$190,409	\$213,829
Alumni	932,264	2,188,469	2,975,723	1,219,065	4,855,784
Friends of A-State	349,204	456,006	494,524	1,052,784	426,634
Organizations/Corp.	1,644,135	5,511,239	1,895,337	2,247,464	1,355,367
Non-Cash Gifts	721,813	139,783	70,428	459,192	56,083
Academic Total	\$3,878,661	\$8,479,134	\$5,624,730	\$5,168,914	\$6,907,695
Athletic Gifts					
Cash Gifts	\$1,598,887	\$1,785,353	\$3,435,844	\$4,912,756	\$8,191,058
Non-Cash Gifts	26,098	63,426	9,349	26,081	0.00
Athletic Total	\$1,624,985	\$1,848,779	\$3,445,193	\$4,938,838	\$8,191,058
Grand Total	\$5,503,646	\$10,327,912	\$9,069,923	\$10,107,752	\$15,098,753



Private donor support enables Arkansas State University to attract and retain the highest quality students. Citizens of Northeast Arkansas communities have historically provided generous donor support. Additionally, private support endows numerous A-State scholarships each year. Scholarships help to keep the brightest students in Arkansas, and scholarships are more necessary now than ever. An endowed scholarship can be established for \$25,000, or an annual gift may be provided to fund one or more scholarships. Scholarships are currently available in virtually every discipline.

Data Source: Office of Development, Arkansas State University
 Information Source: The Office of Institutional Effectiveness: web address: www.AState.edu/irp; email address: asuip@AState.edu



Employees

System Employee Summary

Jonesboro, Beebe, Mtn. Home, Newport & Mid-South - Fall 2017

Full-Time Employees by Category

	Campuses					Total
	A-State	ASUB	ASUMH	ASUN	ASUMS	
Postsecondary Teachers	529	116	43	73	44	805
Archivists, Curators & Museum Technicians	9	0	0	0	0	9
Librarians & Library Technicians	24	7	4	2	1	38
Student, Academic & Other Educational Services Occupations	34	20	9	16	0	79
Management Occupations	215	33	17	12	21	298
Business & Financial Occupations	266	19	1	5	8	299
Computer, Engineering & Science Occupations	70	11	5	7	6	99
Community Service, Social Service, Legal, Arts, Design, Sports & Media Occupations	69	18	1	5	35	128
Healthcare Practitioners & Technical Occupations	10	0	0	0	0	10
Service Occupations, Sales & Related	112	10	6	13	8	149
Office & Administrative Support Occupations	161	43	20	27	21	272
Natural Resources, Construction & Maintenance Occupations	106	15	4	3	0	128
Production, Transportation & Material Moving Occupations	5	1	0	1	0	7
Total Employees	1,610	293	110	164	144	2,321
By Gender						
Male	665	118	42	63	59	947
Female	945	175	68	101	85	1,374
By Ethnicity						
African American	178	12	0	11	48	249
American Indian/Alaskan Native	7	3	0	0	0	10
Asian American	42	2	0	1	2	47
Hispanic American	33	1	3	0	0	37
Native Hawaiian/Pacific Islander	1	2	0	0	0	3
Two or More Races	6	2	0	0	1	9
White American	1,313	271	107	151	93	1,935
Other Ethnicity**	30	0	0	1	0	31
Total Known Minorities***	267	22	3	12	51	355

**Other Ethnicity includes internationals and unknown.

***Minorities include African American, American Indian/Alaskan Native, Asian American, Hispanic American, Native Hawaiian/Pacific Islander, and those reporting two or more races.

Data Source: Faculty/Staff Information

Information Source: The Office of Institutional Effectiveness: web address: www.AState.edu/irp; email address: asuip@AState.edu

Full-Time Instructional Faculty

Jonesboro Campus - Fall 2013 to Fall 2017

Total Full-Time Instructional Faculty										
	Fall Semesters					Percentage of Faculty Total				
	2013	2014	2015	2016	2017	2013	2014	2015	2016	2017
Total Full-Time Faculty	505	502	502	498	527					
9/10 Month Faculty	440	439	440	433	454	87.1%	87.5%	87.6%	86.9%	86.1%
11/12 Month Faculty	65	63	62	65	73	12.9%	12.5%	12.4%	13.1%	13.9%
Faculty by Gender										
Male	245	237	234	233	246	48.5%	47.2%	46.6%	46.8%	46.7%
Female	260	265	268	265	281	51.5%	52.8%	53.4%	53.2%	53.3%
Faculty by Ethnicity										
African American	34	32	33	33	32	6.5%	6.4%	6.6%	6.6%	6.1%
American Indian/Alaskan Native	3	2	2	3	3	0.4%	0.4%	0.4%	0.6%	0.6%
Asian American	34	27	32	32	33	7.1%	5.4%	6.4%	6.4%	6.3%
Hispanic American	7	8	8	10	11	1.0%	1.6%	1.6%	2.0%	2.1%
Native Hawaiian/Pacific Islander	0	0	1	1	1	0.0%	0.0%	0.2%	0.2%	0.2%
Two or More Races	8	18	16	4	2	3.2%	3.6%	3.2%	0.8%	0.4%
White American	396	392	395	396	421	79.0%	78.1%	78.7%	79.5%	79.9%
Ethnicity Unknown	3	4	3	4	16	0.6%	0.8%	0.8%	3.0%	3.0%
International	20	19	12	15	8	2.2%	3.8%	3.0%	1.5%	1.5%
Total Known Minorities*	86	87	92	83	82	17.0%	17.3%	18.3%	16.7%	15.6%
Faculty by Age										
Under 33	50	49	41	44	51	9.9%	9.8%	8.2%	8.8%	9.7%
33 to 40	92	89	98	101	98	18.2%	17.7%	19.5%	20.3%	18.6%
41 to 48	101	98	100	93	98	20.0%	19.5%	19.9%	18.7%	18.6%
49 to 56	108	110	100	101	109	21.4%	21.9%	19.9%	20.3%	20.7%
57 & Older	154	156	163	159	171	30.5%	31.1%	32.5%	31.9%	32.4%

*NOTE: Minorities include African American, American Indian/Alaskan Native, Asian American, Hispanic American, Native Hawaiian/Pacific Islander and those reporting two or more races.
Data Source: Faculty/Staff Information
Information Source: The Office of Institutional Effectiveness: web address: www.AState.edu/irp; email address: asuirp@AState.edu

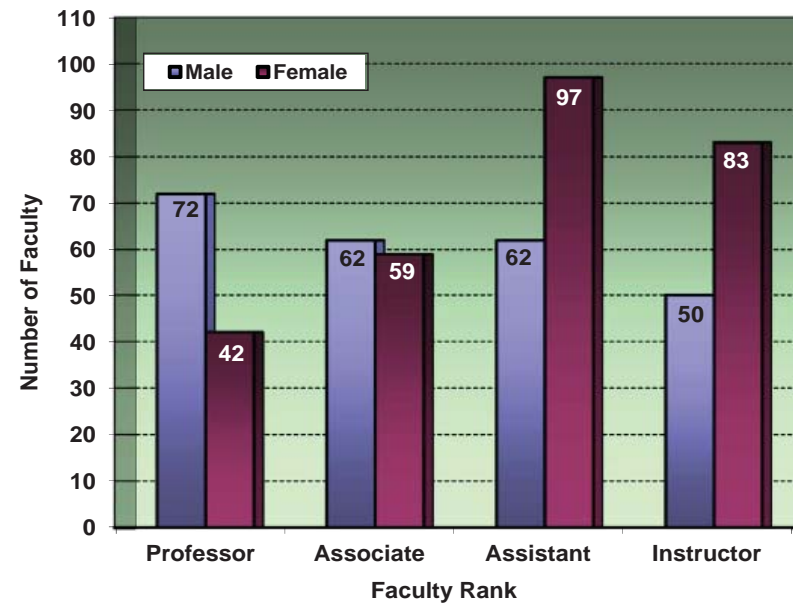
Full-Time Instructional Faculty Statistics

Jonesboro Campus

HISTORICAL FULL-TIME INSTRUCTIONAL FACULTY BY RANK

Faculty Rank	Fall Semesters				
	2013	2014	2015	2016	2017
Professor	105	100	105	107	114
Associate	132	124	121	112	121
Assistant	162	160	162	163	159
Instructor	106	118	114	116	133
All Ranks	505	502	502	498	527

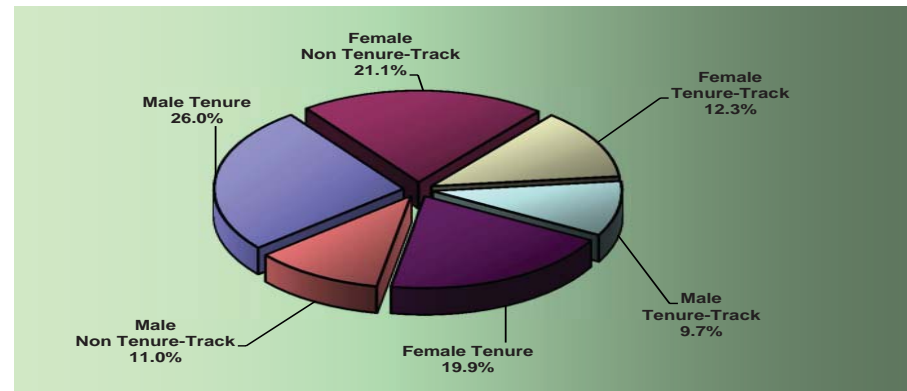
FULL-TIME INSTRUCTIONAL FACULTY BY RANK & GENDER
Fall 2017



HISTORICAL SEMESTER CREDIT HOUR (SCH) PRODUCTION BY RANK

Faculty Rank	Fall Semesters				
	2013	2014	2015	2016	2017
Number & Percentage of SCH Production					
Professor	25,258	23,254	24,516	23,435	25,620
	17.4%	16.3%	17.2%	16.0%	18.2%
Associate	29,097	26,967	25,883	28,003	26,877
	19.9%	18.9%	18.1%	19.2%	19.0%
Assistant	32,585	30,859	32,613	34,309	31,110
	22.4%	21.6%	22.8%	23.5%	22.0%
Instructor	33,237	34,605	33,804	32,376	34,835
	22.8%	24.2%	23.7%	22.2%	24.7%
Supplemental Faculty*	25,384	27,119	25,968	27,942	22,663
	17.4%	19.0%	18.2%	19.1%	16.1%
Total SCH Production	145,563	142,804	142,784	146,065	141,105

TENURE STATUS OF FULL-TIME INSTRUCTIONAL FACULTY BY GENDER
Fall 2017



Data Sources: Salaries, Tenure and Fringe Benefits of Full-Time Instructional Faculty Surveys
Information Source: The Office of Institutional Effectiveness: web address: www.AState.edu/irp; email address: asuip@AState.edu

Full-Time Instructional Faculty Salaries

Jonesboro Campus

HISTORICAL A-STATE MEAN FACULTY SALARIES*

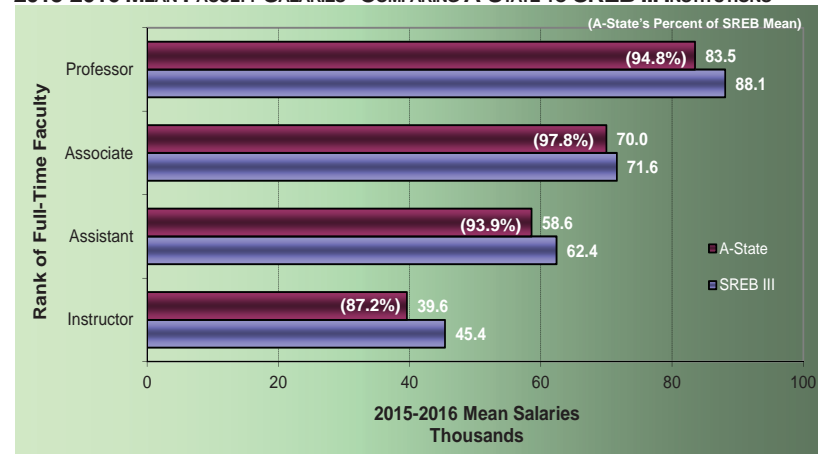
Fall Semesters	Rank of Full-Time Faculty			
	Professor	Associate	Assistant	Instructor
2008	\$75,343	\$61,720	\$53,637	\$36,664
2009	75,475	60,146	53,809	36,538
2010	73,652	60,171	54,918	34,966
2011	78,155	62,546	56,764	36,468
2012	81,892	65,936	56,657	38,045
2013	83,710	68,534	57,827	40,638
2014	83,817	69,449	59,230	40,880
2015	83,494	69,967	58,639	39,578
2016	84,526	70,253	60,306	40,754
2017	86,365	71,046	60,591	41,875
Percent Change 2008-2017	14.6%	15.1%	13.0%	14.2%

2015-2016 MEAN FACULTY SALARIES* FOR ARKANSAS PUBLIC 4-YEAR INSTITUTIONS

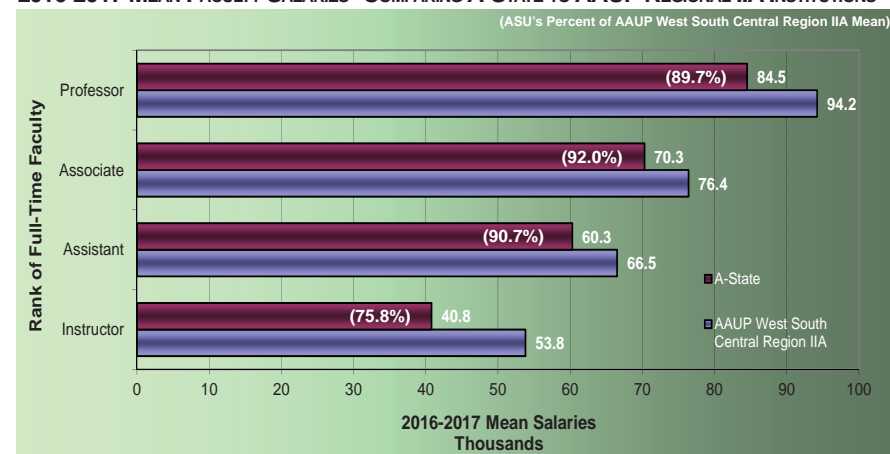
Institution	SREB & AAUP Classifications		Rank of Full-Time Faculty			
			Professor	Associate	Assistant	Instructor
UAF	I	I	\$115.5	\$85.1	\$77.6	\$49.4
UALR	II	IIA	85.5	68.2	57.5	43.9
ASU	III	IIA	83.5	70.0	58.6	39.6
SAUM	IV	IIB	81.2	62.5	54.1	41.8
UCA	III	IIA	80.0	67.1	59.8	50.1
ATU	III	IIB	78.3	64.2	53.9	41.3
UAM	V	IIB	66.8	57.8	49.3	40.3
UAPB	VI	IIB	63.6	56.2	53.0	43.0
HSU	IV	IIA	68.8	57.4	54.4	44.7

(Salaries in Thousands)

2015-2016 MEAN FACULTY SALARIES* COMPARING A-STATE TO SREB III INSTITUTIONS**



2016-2017 MEAN FACULTY SALARIES* COMPARING A-STATE TO AAUP REGIONAL IIA INSTITUTIONS***



*NOTE: Salaries reported as 11-12 month appointments have been converted to 9-10 month equivalents by reducing the reported amounts by 2/11.

**NOTE: SREB III consists of institutions in Alabama, Arkansas, Florida, Georgia, Kentucky, Louisiana, Maryland, Mississippi, North Carolina, Oklahoma, South Carolina, Tennessee, Texas, Virginia and West Virginia.

***NOTE: Institutions classified as AAUP West South Central Region Master's IIA include institutions in Arkansas, Louisiana, Oklahoma and Texas which confer less than 30 doctoral degrees per year.

Data Sources: Salaries, Tenure and Fringe Benefits of Full-Time Instructional Faculty Surveys; AAUP Faculty Compensation Surveys; SREB and Academic

Information Source: The Office of Institutional Effectiveness: web address: www.AState.edu/irp; email address: asuirp@AState.edu

Full-Time Staff Statistics

Jonesboro Campus

Jonesboro Campus Full-Time Staff

	Fall Semesters					Percentage of Total by Category				
	2013	2014	2015	2016	2017	2013	2014	2015	2016	2017
Archivists, Curators & Museum Technicians	7	6	8	8	9	0.6%	0.6%	0.7%	0.8%	0.8%
Librarians & Library Technicians	28	27	27	25	24	2.6%	2.5%	2.5%	2.4%	2.2%
Student & Other Educ. Serv.	46	33	36	45	34	4.2%	3.1%	3.3%	4.3%	3.1%
Management	209	190	197	210	215	19.1%	17.9%	18.2%	20.2%	19.9%
Business & Financial	237	252	272	256	266	21.7%	23.8%	25.1%	24.6%	24.6%
Computer, Eng. & Science	76	77	74	65	70	7.0%	7.3%	6.8%	6.2%	6.5%
Comm., Soc., Legal, Arts, Sports & Media	70	73	71	65	69	6.4%	6.9%	6.6%	6.2%	6.4%
Healthcare Practitioners & Technical	7	8	9	10	10	0.6%	0.8%	0.8%	1.0%	0.9%
Service	109	105	111	99	112	10.0%	9.9%	10.3%	9.5%	10.4%
Office & Administrative Support	180	169	160	151	161	16.5%	16.0%	14.8%	14.5%	14.9%
Natural Resources, Const. & Maint.	119	115	112	102	106	10.9%	10.9%	10.4%	9.8%	9.8%
Prod., Transportation & Material Moving	5	4	5	5	5	0.5%	0.4%	0.5%	0.5%	0.5%
Total Employees	1,093	1,059	1,082	1,041	1,081					
By Gender										
Male	426	412	408	401	417	39.0%	38.9%	37.7%	38.5%	38.6%
Female	667	647	674	640	664	61.0%	61.1%	62.3%	61.5%	61.4%
By Ethnicity										
African American	134	127	130	129	146	12.3%	12.0%	12.0%	12.4%	13.5%
American Indian/Alaskan Native	6	4	2	5	4	0.5%	0.4%	0.2%	0.5%	0.4%
Asian American	11	6	9	11	9	1.0%	0.6%	0.8%	1.1%	0.8%
Hispanic American	11	11	14	14	22	1.0%	1.0%	1.3%	1.3%	2.0%
Native Hawaiian/Pacific Islander	0	3	2	0	0	0.0%	0.3%	0.2%	0.0%	0.0%
Two or More Races	10	17	21	14	4	0.9%	1.6%	1.9%	1.3%	0.4%
White American	901	885	899	857	891	82.4%	83.6%	83.1%	82.3%	82.4%
Other Ethnicity*	20	6	5	11	5	1.8%	0.6%	0.5%	1.1%	0.5%
Total Known Minorities**	172	168	178	173	185	15.7%	15.9%	16.5%	16.6%	17.1%

*Other Ethnicity includes nonresident aliens and unknown.

**Minorities include African American, American Indian/Alaskan Native, Asian American, Hispanic American, Native Hawaiian/Pacific Islander and those reporting two or more races.

Data Sources: Faculty/Staff Information

Information Source: The Office of Institutional Effectiveness: web address: www.AState.edu/irp; email address: asuipr@AState.edu