



## **Board of Trustees Meeting**

Arkansas State University System

Friday, December 13, 2024, at 10:00 a.m.

ASU System Office

## **Agenda**

### **I. Call to Order**

### **II. Approval of the Minutes of the Past Meetings: September 6, 2024, September 19, 2024, and November 14, 2024**

### **III. President's Report**

### **IV. Agenda**

#### **A. Proposed ASU System Resolutions**

- 1. Resolution #24-53 approving the ASU System to proceed with the Chilled Water Loop Upgrades Capital Project at A-State**
- 2. Resolution #24-54 approving the ASU System to proceed with the Workforce Center Renovation and Expansion Capital Project at ASU Three Rivers**

#### **B. Proposed Arkansas State University (A-State) Resolutions**

- 1. Resolution #24-55 approving A-State to set policies pertaining to residency classification and tuition waivers for applicants admitted into the programs of the College of Veterinary Medicine**
- 2. Resolution #24-56 approving A-State to confer the Honorary Degree of Doctor of Music upon Ashley McBryde**

#### **C. Proposed ASU-Mountain Home Resolution**

- 1. Resolution #24-57 approving ASU-Mountain Home to grant an easement to the City of Mountain Home**

#### **D. Proposed ASU Mid-South Resolution**

- 1. Resolution #24-58 approving ASU Mid-South to enter into agreements for private camps**

### **V. Executive Session**

## **VI. Approval of Personnel Actions**

- A. A-State Personnel**
- B. ASU-Beebe Personnel**
- C. ASU-Mountain Home Personnel**
- D. ASU-Newport Personnel**
- E. ASU Mid-South Personnel**
- F. ASU Three Rivers Personnel**

## **VII. Other Business**

- A. Election of Officers**

## **VIII. Adjournment**

**EXECUTIVE SUMMARY**

Contact: Jeff Hankins (501) 660-1004

**ACTION ITEM:** The Arkansas State University System requests approval to proceed with the Chilled Water Loop Upgrades Capital Project at Arkansas State University (A-State).

**ISSUE:** The Board of Trustees must approve all capital projects.

**BACKGROUND:**

- Upgrades to A-State's chilled water loop include the installation of a new 1,000-ton chiller and cooling tower in the central plant, which are necessary due to building the Wingate Art and Innovation Center. This project was covered under the ASU System Capital Expenditure Budget for FY2025
- The capital project will be financed through institutional reserves of \$1,951,250.
- A copy of the Capital Project Proposal Form is attached to this resolution.

**RECOMMENDATION/RESOLUTION:**

Be it resolved that the Arkansas State University System is approved to proceed with the Chilled Water Loop Upgrades Capital Project at A-State.

---

Robert G. Rudolph Jr., Secretary

---

Christy Clark, Chair

# ASU System

## Capital Project Proposal Form

In accordance with Board policy, the term "capital project" means a new construction, renovation, or remodeling project with a projected cost exceeding \$1,000,000. Campus officials shall complete a Capital Project proposal form and submit to the President for review and recommendations. The President will submit Capital Project proposals to the Board of Trustees for approval. Forms should be submitted electronically to the System Vice President for Finance.

<b>Institution</b>	Arkansas State University - Jonesboro	<b>Date</b>	10/28/24
<b>Project Name</b>	Chilled Water Loop Upgrades (Windgate)		

**Project Description (in detail)**

This project includes installing a new 1,000-ton chiller and cooling tower in the central plant. The upgrade is needed due to the addition of the Windgate Art and Innovation Center. The project was included on the FY 25 planned project list.

<b>Estimated Date of Commencement</b>	12/15/24
<b>Estimated Date of Completion</b>	05/31/26
<b>Total Project Cost Estimate</b>	\$1,951,250

**Please provide the detail of cost estimate below:**

	<b>Estimated Project Cost</b>
Construction (include cost of built-in equipment)	\$ 1,750,000
Architect/Engineer Fees	113,750
Contingencies (not to exceed 10% of Construction and A&E)	87,500
Land Purchases	-
Movable Equipment and Furniture	-
<b>Total Cost of Project</b>	<b>\$ 1,951,250</b>

**Please provide detail of planned sources of funding:**

	<b>Amount</b>	<b>Percentage</b>
General Improvement	\$ -	0.0%
Institutional Reserves	1,951,250	100.0%
Institutional Operating Funds	-	0.0%
State Grant Funds	-	0.0%
Federal Grant Funds	-	0.0%
Special Revenue Funds	-	0.0%
Foundation or Other Private Monies	-	0.0%
Bond Proceeds (if approved)	-	0.0%
<b>Total Proposed Funding</b>	<b>\$ 1,951,250</b>	<b>100.0%</b>

**Notes**

N/A

**EXECUTIVE SUMMARY**

Contact: Jeff Hankins (501) 660-1004

**ACTION ITEM:** The Arkansas State University System requests approval to proceed with the Workforce Center Renovation and Expansion Capital Project at Arkansas State University Three Rivers (ASUTR).

**ISSUE:** The Board of Trustees must approve all capital projects.

**BACKGROUND:**

- ASUTR plans to expand and renovate a campus facility to create a new Workforce Center to support electrical and millwright training programs. When completed, the building will be 7,900 square feet in size and will include offices and five classrooms. Equipment will include robotics and PLC trainers.
- The capital project will be financed through special revenue funds (a Higher Industry Readiness through Educational Development [HIRED] grant) of \$2,819,250 and through foundation or other private monies of \$150,000.
- A copy of the Capital Project Proposal Form is attached to this resolution.

**RECOMMENDATION/RESOLUTION:**

Be it resolved that the Arkansas State University System is approved to proceed with the Workforce Center Renovation and Expansion Capital Project at ASU Three Rivers.

---

Robert G. Rudolph Jr., Secretary

---

Christy Clark, Chair

# ASU System

## Capital Project Proposal Form

In accordance with Board policy, the term "capital project" means a new construction, renovation, or remodeling project with a projected cost exceeding \$1,000,000. Campus officials shall complete a Capital Project proposal form and submit to the President for review and recommendations. The President will submit Capital Project proposals to the Board of Trustees for approval. Forms should be submitted electronically to the System Vice President for Finance.

<b>Institution</b>	Arkansas State University Three Rivers	<b>Date</b>	11/18/24
<b>Project Name</b>	New Workforce Center Renovation & Expansion		

**Project Description (in detail)**

ASUTR plans to expand and renovate a campus facility to support electrical and millwright training programs. When completed, the building will be 7,900 square feet and will include offices and five classrooms. Equipment includes robotics and PLC trainers.

<b>Estimated Date of Commencement</b>	04/01/25
<b>Estimated Date of Completion</b>	12/31/25
<b>Total Project Cost Estimate</b>	\$2,969,250

**Please provide the detail of cost estimate below:**

	<b>Estimated Project Cost</b>
Construction (include cost of built-in equipment)	\$ 1,950,000
Architect/Engineer Fees	117,000
Contingencies (not to exceed 10% of Construction and A&E)	206,700
Land Purchases	-
Movable Equipment and Furniture	695,550
<b>Total Cost of Project</b>	<b>\$ 2,969,250</b>

**Please provide detail of planned sources of funding:**

	<b>Amount</b>	<b>Percentage</b>
General Improvement	\$ -	0.0%
Institutional Reserves	-	0.0%
Institutional Operating Funds	-	0.0%
State Grant Funds	-	0.0%
Federal Grant Funds	-	0.0%
Special Revenue Funds	2,819,250	94.9%
Foundation or Other Private Monies	150,000	5.1%
Bond Proceeds (if approved)	-	0.0%
<b>Total Proposed Funding</b>	<b>\$ 2,969,250</b>	<b>100.0%</b>

**Notes**

ASUTR has been selected to receive \$2,819,250 in HIRED grant funds from the Arkansas Department of Commerce. The grant will be administered through the Arkansas Division of Higher Education. ADHE Will complete an MOU for the grant by the end of November. West Fraser has donated \$150,000 toward the expansion of the Workforace Training Center at ASUTR.

**EXECUTIVE SUMMARY**

Contact: Calvin White (870) 972-2030

**ACTION ITEM:** Arkansas State University (A-State) requests approval to set policies pertaining to residency classification and tuition waivers for applicants admitted into the programs of the College of Veterinary Medicine (CVM).

**ISSUE:** The Board of Trustees must approve policies for all campuses within the System.

**BACKGROUND:**

- A-State is authorized by the Arkansas Higher Education Coordinating Board and the Higher Learning Commission to confer the degree of Doctor of Veterinary Medicine (DVM).
- A-State's College of Veterinary Medicine is currently seeking accreditation from the American Veterinary Medical Association-Council on Education.
- It is necessary for the A-State CVM to clarify tuition and fee procedures for those admitted into its DVM degree program.
- To ensure financial viability, the A-State CVM proposes the following policies for students admitted into the DVM degree program:
  - Out-of-state residents, who are admitted into the DVM degree program, will remain in non-resident status, for the purpose of calculating tuition and fees throughout the duration of their enrollment in the program.
  - Programs delivered by the CVM are not eligible for the following: employee discount; contiguous state discount; alumni discount; or other discounting or waiver policies in effect or developed for the A-State campus for non-DVM degree programs in the future, unless those policies expressly apply to the DVM program.

**RECOMMENDATION/RESOLUTION:**

Be it resolved that Arkansas State University is approved to set policies pertaining to residency classification and tuition waivers, as stated above, for applicants admitted into the programs of the College of Veterinary Medicine, effective immediately.

**ARKANSAS STATE UNIVERSITY SYSTEM  
BOARD OF TRUSTEES**

A Resolution Conferring  
the Honorary Degree of Doctor of Music  
upon Ashley McBryde

**WHEREAS**, the Board of Trustees of the Arkansas State University System has adopted procedures for awarding honorary degrees upon individuals who have made an extraordinary difference in the lives of so many; and

**WHEREAS**, the procedures adopted by the Board provide that honorary degrees are to be conferred upon persons, who serve as models worthy of emulation and respect. Procedures require that nominations for such a degree be reviewed and approved by the Honorary Doctorate Committee and must also receive the recommendation of the Chancellor. Nominees must have achieved the highest levels of excellence as scholars, artists, professionals, philanthropists, or public servants, and must have demonstrated personal integrity and concern for the public good; and

**WHEREAS**, American country music singer-song writer and Arkansas native Ashley McBryde has been nominated for an honorary degree from her alma mater, Arkansas State University (A-State), and this nomination has been properly reviewed and recommended by the Honorary Doctorate Committee, the Chancellor of A-State, and the President of the ASU System;

**NOW, THEREFORE, BE IT RESOLVED** by the Board of Trustees of the Arkansas State University System that Ashley McBryde shall be granted the honorary degree, Doctor of Music, from Arkansas State University and that said degree shall be conferred upon her during commencement exercises on May 10, 2025.

DULY ADOPTED AND APPROVED, this 13<sup>th</sup> day of December 2024

---

Christy Clark, Chair

---

Steve Eddington, Vice Chair

---

Robert G. Rudolph Jr., Secretary

---

Paul Rowton, Member

---

Price Gardner, Member

---

Gary Harpole, Member

---

Jerry Morgan, Member

---

Brendan B. Kelly, President



**EXECUTIVE SUMMARY**

Contact: Bentley Wallace (870) 508-6101

**ACTION ITEM:** The Arkansas State University System requests approval for Arkansas State University-Mountain Home (ASUMH) to grant an easement to the City of Mountain Home (City).

**ISSUE:** The ASU System Board of Trustees must approve all land transactions.

**BACKGROUND:**

- ASUMH is currently developing the James and Sally Moore Recreational Trail. The Board previously approved an easement to the City for this project in March of 2022 (Resolution 22-09).
- The City informed ASUMH that it wants to connect the James and Sally Moore Recreational Trail to the Donald W. Reynolds Baxter County Library (Library) that is adjacent to ASUMH property. ASUMH is supportive of this request.
- In order to link the James and Sally Moore Recreational Trail to the Library property, the City requests an easement across a portion of the ASUMH property for the purpose of additional trail construction.
- The proposed easement, along with the description and images, are attached to this resolution.

**RECOMMENDATION/RESOLUTION:**

Be it resolved that Arkansas State University-Mountain Home is approved to grant an easement to the City of Mountain Home, as described above, and the Chancellor, or Chancellor's designee, is authorized to execute all documents necessary to complete such conveyance.

---

Robert G. Rudolph, Jr., Secretary

---

Christy Clark, Chair

## EASEMENT

KNOW ALL MEN BY THESE PRESENT:

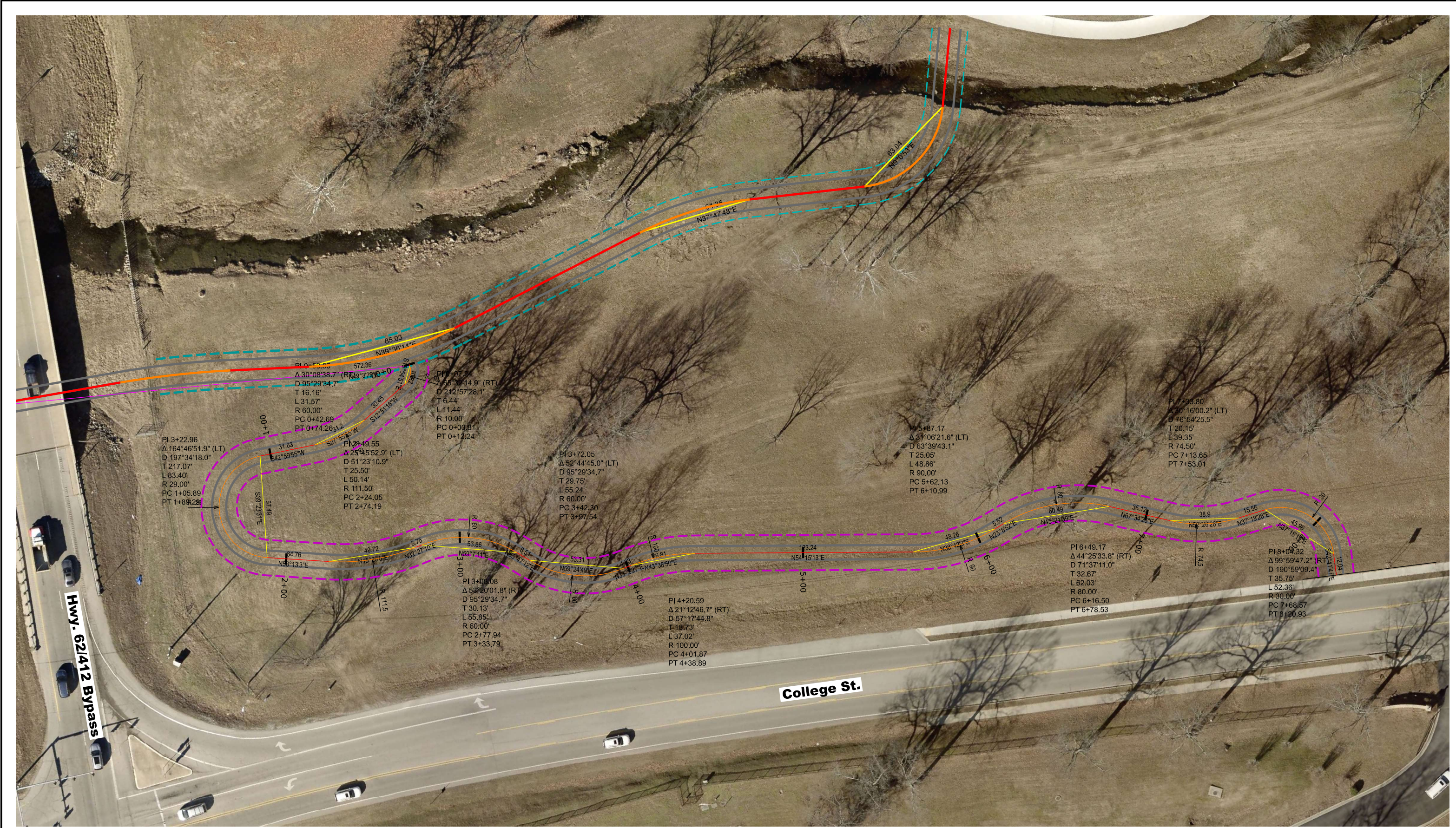
That for and in consideration of a donation to the undersigned, Arkansas State University, GRANTOR(S), does hereby grant, bargain, sell, donate and convey unto **City of Mountain Home, AR**, GRANTEE(S), and unto its successor and assigns forever, a right-of-way and easement to build, maintain and use a multi-purpose recreational trail, along with any and all drainage structures and necessary appurtenances thereto with right of ingress and egress, in perpetuity for all members of the general public, to and from the same, on, over, across and under the following described real estate situated in **Baxter** County, Arkansas, to wit:

### EASEMENT DESCRIPTION:

A TWENTY (20) FOOT WIDE EASEMENT LOCATED IN THE SW1/4 OF SECTION 16, TOWNSHIP 19 NORTH, RANGE 13 WEST, BAXTER COUNTY, ARKANSAS, CENTERED ON A LINE DESCRIBED AS FOLLOWS: FROM THE SW CORNER OF THE NW1/4 SW1/4 SECTION 16, TOWNSHIP 19 NORTH, RANGE 13 WEST, THENCE N49°03'29"E 572.36 FEET TO THE POINT OF BEGINNING. STARTING AT THE POB TRAVEL ALONG A CURVE TO THE RIGHT WITH A RADIUS OF 10.00 FEET AND ARC LENGTH OF 11.44 FEET, SUBTENDE BY A CORD BEARING S19°54'51"E FOR A DISTANCE OF 10.83 FEET, THEN S12°51'16"W A DISTANCE OF 30.45 FEET, THEN ALONG A CURVE TO THE RIGHT WITH A RADIUS OF 60 FEET AND ARC LENGTH OF 31.57 FEET, SUBTENDE BY A CORD BEARING S27°55'35"W FOR A DISTANCE OF 31.20 FEET, THEN S42°59'66"W A DISTANCE OF 31.63 FEET, THEN ALONG A CURVE TO THE LEFT WITH A RADIUS OF 29.00 FEET AND ARC LENGTH OF 83.40 FEET, SUBTENDE BY A CORD BEARING S39°23'31"E FOR A DISTANCE OF 57.49 FEET, THEN N58°13'03"E A DISTANCE OF 34.76 FEET, THEN ALONG A CURVE TO THE LEFT WITH A RADIUS OF 111.50 FEET AND ARC LENGTH OF 50.14 FEET, SUBTENDE BY A CORD BEARING N45°20'06"E FOR A DISTANCE OF 49.72 FEET, THEN N32°27'10"E A DISTANCE OF 3.75 FEET, THEN ALONG A CURVE TO THE RIGHT WITH A RADIUS OF 60.00 FEET AND ARC LENGTH OF 55.85 FEET, SUBTENDE BY A CORD BEARING N59°07'11"E FOR A DISTANCE OF 53.86 FEET, THEN N85°47'12"E A DISTANCE OF 8.51 FEET, THEN ALONG A CURVE TO THE LEFT WITH A RADIUS OF 60.00 FEET AND ARC LENGTH OF 55.24 FEET, SUBTENDE BY A CORD BEARING N59°24'49"E FOR A DISTANCE OF 53.31 FEET, THEN N33°02'27"E A DISTANCE OF 4.33 FEET, THEN ALONG A CURVE TO THE RIGHT WITH A RADIUS OF 100.00 FEET AND ARC LENGTH OF 37.02 FEET, SUBTENDE BY A CORD BEARING N43°38'50"E FOR A DISTANCE OF 36.81 FEET, THEN N54°15'13"E A DISTANCE OF 123.24 FEET, THEN ALONG A CURVE TO THE LEFT WITH A RADIUS OF 90 FEET AND ARC LENGTH OF 48.86 FEET, SUBTENDE BY A CORD BEARING N38°42'03"E FOR A DISTANCE OF 48.26 FEET, THEN N23°08'52"E A DISTANCE OF 5.52 FEET THEN ALONG A CURVE TO THE RIGHT WITH A RADIUS OF 80.00 FEET AND ARC LENGTH OF 62.03 FEET, SUBTENDE BY A CORD BEARING N45°21'39"E FOR A DISTANCE OF 60.49 FEET THEN N67°34'26"E A DISTANCE OF 35.12 FEET THEN ALONG A CURVE TO THE LEFT WITH A RADIUS OF 74.50 FEET AND ARC LENGTH OF 39.36 FEET, SUBTENDE BY A CHORD BEARING N52°26'26"E FOR A DISTANCE OF 38.90 FEET THEN N37°18'26"E FOR A DISTANCE OF 15.56 FEET THEN ALONG A CURVE TO THE RIGHT WITH A RADIUS OF 30 FEET AND ARC LENGTH OF 52.36 FEET, SUBTENDE BY A CORD BEARING N87°18'19"E FOR A DISTANCE OF 45.96 FEET, THEN S42°41'47"E FOR A DISTANCE OF 12.04 FEET TO THE NORTHWESTERN ROW OF COLLEGE STREET CONTAINING 0.38 ACRES MORE OR LESS.

NOTARY PUBLIC





Print Date: <b>NOVEMBER 2024</b>	<b>NOTES:</b>			<b>MTN. HOME RECREATIONAL TRAILS PH.3 (TAP-23)(S)</b>	<b>DESIGN</b>		<b>ROW PLAN</b>	<b>Project Number</b>	
	<b>Date:</b>	<b>Comments</b>	<b>Init.</b>		<b>Revision No:</b>			<b>JOB 090725</b>	
	11/12/24	Pink dashed line = Library Connector ROW Easement			<b>Revised By:</b>			<b>ROW Library Connector</b>	
					<b>Date:</b>			<b>Sheet Number</b>	
<b>Drawing File Name:</b>					<b>Designer:</b>	<b>A.L.</b>			
<b>Horiz. Scale: NOT TO SCALE</b>					<b>Detailer:</b>	<b>A.L.</b>			



**EXECUTIVE SUMMARY**

Contact: Jeremy Reece (870) 733-6786

**ACTION ITEM:** Arkansas State University Mid-South (ASU Mid-South) requests approval to enter into agreements submitted for the purpose of allowing certain employees to conduct private camps on, in, and adjacent to ASU Mid-South facilities.

**ISSUE:** ASU Mid-South wishes to contract with certain employees to conduct private camps on the ASU Mid-South campus. Such camps are designed to bring future students to the campus and expose them to its facilities and personnel, while engaging in program activities. Additionally, funds are generated and paid to ASU Mid-South to cover the use of its facilities and auxiliary services.

**BACKGROUND:**

- A.C.A. § 6-62-401 authorizes the Boards of Trustees of state institutions of higher learning to grant permission to employees of such institutions to conduct, on and in campus facilities, certain outside work for private compensation (as described in the Act). Employees are to be engaged in this outside work only after they have fully discharged their employment responsibilities to such institutions. Employees, who accrue annual leave, are required to take their annual leave during these camp periods.
- The Act grants the Board the non-delegable duty to make express findings of fact, as follows:
  - the activities in question involve no conflict of interest with the mission and purpose of the institution itself;
  - the proposed activities would bring to the campus a significant number of persons who are potentially future students, and who might tend to enroll on that campus, as a result of their exposure to its facilities and personnel while engaged in these activities; and
  - the contemplated activities will, as a part thereof, generate funds to be paid to the state institution for housing, meals, and for the use of institutional resources that will produce significant revenues in support of the auxiliary functions of the particular campus serving its enrolled students.
- All agreements will comply with A.C.A. § 6-62-401.

**RECOMMENDATION/RESOLUTION:**

Be it resolved that Arkansas State University Mid-South is approved to enter into agreements submitted for the purpose of allowing certain employees to conduct private camps on, in, and adjacent to ASU Mid-South campus facilities, effective December 1, 2024, through June 30, 2025.